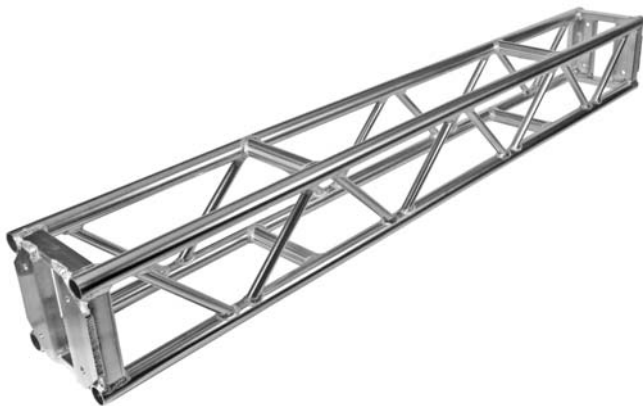




FEATURES

Highly Polished Aluminum Tubing
1.9" OD 6061-T6 Aluminum Tube Schd #40
0.145" Wall Thickness
1.05" OD Aluminum Bracing
Fabricated By Certified Welders
Custom Lengths & Corners Available
Available With Steel Spigots
Powder Coating Available

Applied Electronics All Purpose truss is manufactured with schedule 40, 1.9" OD x 0.145" wall main chords and 1.05" OD x 0.125" wall diagonal bracing. All components are 6061-T6 aluminum tubing and 5/8" grade 8 bolts are supplied for assembly of the truss elements. All Purpose truss, combined with the matching corner blocks, can be used to construct a grid.



PLATED ALLOWABLE LOAD DATA

Maximum Allowable Uniform Loads



Maximum Allowable Center Point Loads



SPAN (ft.)	LOAD (#/ft.)	LOAD (#)	MAX. DEFL. (in.)	LOAD (#)	MAX. DEFL. (in.)
10	604	6040	0.17	2940	0.19
20	212	4240	0.96	2122	0.77
30	84	2520	2.00	1364	1.75
40	28	1120	2.39	565	2.01

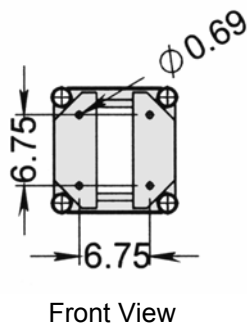
Connection: 5/8" Dia. x 2" Grade 8 Bolts

Weight Load Certified By Structural Engineer

1. All Uniform & Point Loads Are Equally Distributed Between The Two Bottom Chord Members.
2. Do Not Load Top Chord Of Truss Without Contacting Engineer For Approval.
3. Self-Weight Of The Truss Is Accounted For In The Calculation Of All Loading Conditions Listed Above.
4. For Point Load Condition, Invert The Truss As Required To Assure Point Load Is Applied Within 4" Of A Truss Node.

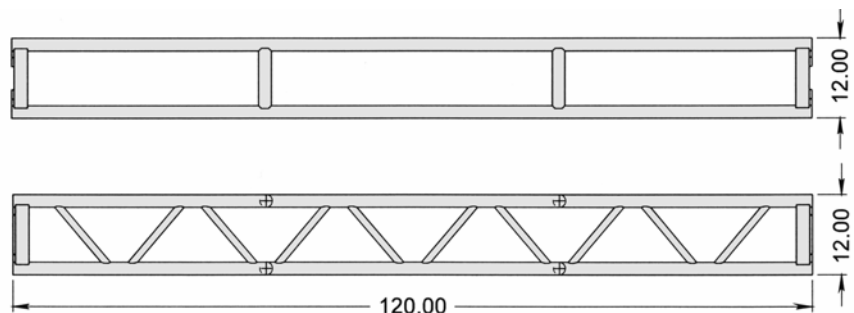
ORDERING INFORMATION

Item No.	Dimensions	Weight
11-12-120	12" x 12" x 10'	55 lbs.
11-12-096	12" x 12" x 8'	50 lbs.
11-12-060	12" x 12" x 5'	35 lbs.
11-12-030	12" x 12" x 2.5'	23 lbs.
11-12-004	4-Way Corner	20 lbs.
11-12-005	5-Way Corner	25 lbs.

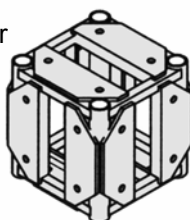


Top View

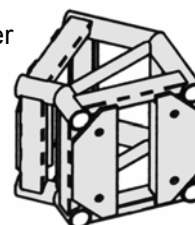
Side View



Standard Corner



Custom Corner



Hinge

