



Vectorworks®Spotlight

YOUR
VISIONS.
PERFECTLY
REALIZED.

VECTORWORKS SPOTLIGHT

We know that great design begins not in a computer but in the mind of the designer. We simply provide the tools to help designers capture their ideas, develop them, and communicate them ... easily, accurately, and efficiently. Our DNA originates in the creative part of the design process, and so we place a heavy emphasis on freedom of artistic expression through the development and documentation of each project.

Whether you design lighting, scenery, sets, events, theatrical productions, or exhibits, Vectorworks Spotlight software will help make your next production memorable.



On the cover: Lightscape Designs, Ltd.

As founder of Lightscape Design, Ltd. in England, David Lee creates lightscapes that leave lasting impressions. The light set he designed for the U.K. breakout pop band One Direction's first headlining show at New York's Madison Square Garden was no different. The sold-out concert was exhilarating, and Lee's lighting greatly enhanced the pulsing One Direction music that has electrified young fans.

Image courtesy of Lightscape Design, Ltd.

To read more about this and other projects, visit: www.vectorworks.net/success-stories

CAPTURE YOUR VISION

With Vectorworks Spotlight, you have the freedom to design in your own way, use the tools you want, and capture your ideas all in one place to reduce wasteful repetition and inefficient work. Plus, you can maintain your existing workflows, incorporating your design process and making the best use of the skills you already have in house. Collaborate with the design team and colleagues who use other software applications, and seamlessly collect and organize conceptual research information into Vectorworks to capture all the elements of your vision.

Powerful Conceptualization

Find your inspiration and start drawing. Or, import hand sketches, site pictures, and even documents or models from other applications. Start ideas in 2D, and develop them in 3D with free-form models.

Free-Form Modeling

With our intuitive interface, you can design from any 3D view using modes in modeling tools that automatically infer working planes as you move your cursor, and enjoy the superior quality that allows you to manipulate your model with ease. More accurate object information and better snapping make drawing in 3D easy. The SmartCursor™ helps by showing hints, like the angle from the previous segment, as you draw, and our new patent-pending X-ray Select technology lets you see through models to select, move, and modify hidden objects with precision and ease. Plus, an advanced suite of solids and NURBS surface tools lets you create any shape and easily explore organic geometry. Push, pull, blend, twist, sculpt, deform, or punch holes. Anything is possible with Vectorworks Spotlight.

Stellar Lighting

Experience Vectorworks Spotlight's renowned lighting design capabilities. Quickly create light plots, automate paperwork, and visualize your design in rendered 3D views. For high-end previsualization, move your models seamlessly to ESP Vision to cue and program your show.

Enticing Exhibits, Productions, and Events

Make it an event to remember. Easily import venues from facilities managers and hospitality staff, or build them using Vectorworks Spotlight's easy-to-use tools and pre-drawn resources. With the cutting-edge event-planning suite, you can quickly create the room, stage, steps, lectern, video screens, and seating. Plus, you can create standard views to show to your client and generate reports for the total number of tables and chairs in your room.

Endless Digital Images

Make your work even more compelling and easier to communicate with digital imagery. Import scans, digital photos, or web images. Import or export a wide array of image files, including Illustrator® EPS and native Photoshop® PSD files. Also, export your design for inclusion in your firm's marketing materials or website.



Courtesy of Jim Woodward, Exhibit Logic, LLC



Courtesy of Calvin Engel - JBE

DEVELOP WITH YOUR WORKFLOW

Delivering accurate information efficiently while remaining true to a designer's vision is the pivotal point of any artistic enterprise. As with all design tools, the fundamental purpose of software is to support and strengthen inspiration.

With Vectorworks Spotlight, you can move easily between tasks from design concepts to construction documentation and every phase in between. Create, model, present, and develop your designs easily and precisely with one application.

The program boasts a comprehensive set of design development tools to support your entire practice. You have complete functionality for:

Efficient Workgroup Capabilities

Break up complex projects. Workgroup referencing provides a flexible way to split even the most complicated project into shareable pieces.

Interoperability

Get on the cutting edge of collaborative digital practices, and share your information fluidly with Vectorworks software's numerous file translators, including Parasolid® X_T, IGES, SAT, STL, and 3DS. Exchange 3D NURBS models with Rhinoceros®. You can also import concept models from SketchUp®, and access thousands of models from Trimble® 3D Warehouse. Import, export, or directly reference AutoCAD® 2013 (and earlier) files. Publish drawing sets as multi-page PDFs, DWFs, or DXF/DWGs. Export 3D models to Google Earth®.

"The great thing about Spotlight is that the program allows me to think as a lighting designer and get realistic lighting as part of my renderings. I think realistic lighting really makes or breaks a good rendering."
— Christien Methot, design one corporation

Extensive Automated Paperwork and Database Support

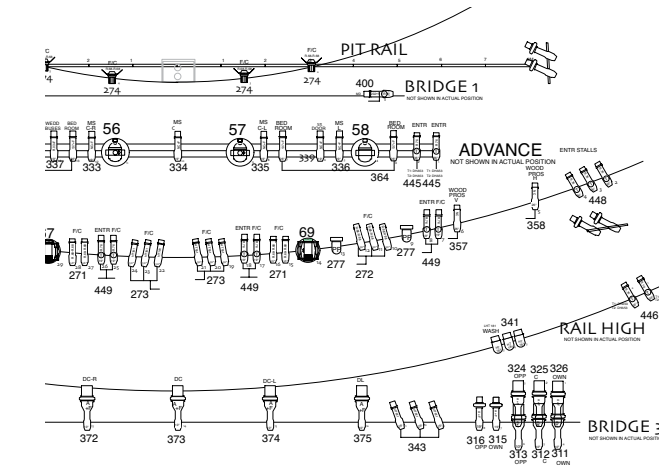
Stop manually counting items in your drawings. Automatic data tracking does the tedious work for you. Built-in paperwork functions allow you to quickly generate customized reports like schedules, inventory/rental lists, and channel and dimmer hookups, as well as magic sheets, color cut lists, and instrument summaries. Take advantage of the two-way link between database worksheets and objects, and gain the power to change object parameters directly from the worksheet. The application goes further than automated schedules and materials take-offs. It provides a user-defined, quick, and accurate way to assign custom data to any object and create unique reports.

The Notes Manager database lets you store, manage, and recall document notation while the Issue Manager keeps track of what, when, and to whom drawings and files were issued. Plus, it automatically updates your title blocks.

When it's important to connect to data sources outside the Vectorworks platform, our ODBC module gives you the power to link to databases and connect objects in Vectorworks Spotlight to the external records and fields for bidirectional reporting and control.



Courtesy of Innovative Show Design



Imagery courtesy of Howard Harrison, Mamma Mia! lighting design by Mark Thompson

Superior 2D Documentation

Produce high-quality documentation with ease. In addition to a suite of precision drafting tools, Vectorworks Spotlight gives you access to extensive libraries of lighting instruments, accessories, scenic elements, architectural objects, audio objects, video objects, machine parts, and furniture from leading manufacturers. Just drag and drop them into your projects. Publish drawing sets as multipage PDFs, DWFs, or DXF/DWGs at full or reduced sizes. Or, publish, share, and collaborate with other key stakeholders in the office or on the job site with Vectorworks Cloud Services and our mobile application Vectorworks Nomad.



Courtesy of Markus Dohner

YOUR VISIONS. PERFECTLY REALIZED.

From vision to reality, we know the best designs are the ones that clearly communicate your inspiration.

Vectorworks Spotlight is inspired by you. Everything from the interface, to the tools and commands, to the superior graphic and presentation capabilities, and the workflows it supports is developed based on input from design professionals like you. Here are just some of the ways Vectorworks Spotlight helps you see your visions perfectly realized.

Easy-to-Use Interface and Drafting Tools

Do what you like to do best — design. You won't waste time getting up to speed because Vectorworks Spotlight software's simple, customizable interface and what-you-see-is-what-you-get display make it easier to learn and use than standard CAD applications. No matter what you're switching from, the Vectorworks Spotlight interface will seem familiar. In addition, Vectorworks software's SmartCursor technology replaces manual drafting tools, so even inexperienced CAD users can make the switch easily.

"I found the Vectorworks user interface to be highly intuitive and easily customizable. Most importantly, it is widely used by my colleagues and has emerged as a new industry standard."
— Tyler Littman, Sholight Entertainment Design Group, LLC



"The XVIII Commonwealth Games opening and closing ceremonies." Courtesy of Peter Neufeld for The Electric Canvas



Powerful Presentations

Define and communicate your signature look with our advanced, high-end technology that's famous for helping users achieve beautiful, graphically rich presentations. Tap into our large libraries of entourage and unlimited palettes of colors. Your style is not limited by "cookie-cutter" looks. Instead, add gradients, tile and image fills, stipples, and hatching. Easily import digital images and graphics. Use our exclusive sketch rendering technology to change hard-lined drawings into soft, hand-sketched illustrations. Multiple page layout options make it simple to arrange presentation boards.



Courtesy of PRG, Hamburg

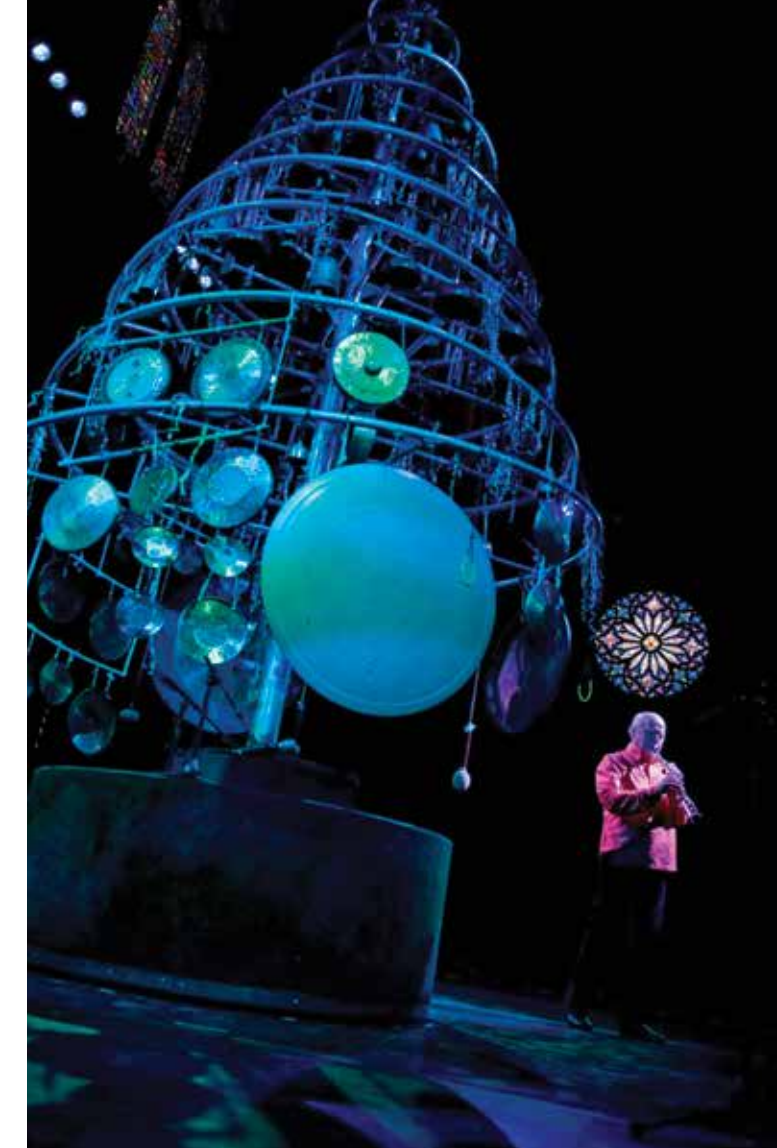
Tailored for Your Success

Work in tandem with the application. Vectorworks Spotlight is designed to work the way you think. In addition to designing with lines, arcs, and circles, you can design with lighting devices, stage platforms, video screen objects, speakers, soft goods, trusses, focus points, walls, doors, windows, roofs, and slabs. The building and entertainment objects are easy to edit and display in both 2D and 3D views. And, with the power of Python™ scripting, plus our own scripting language VectorScript™, you can program everything from simple scripts that automate routine tasks to full-blown commercial applications.

Renderworks

We've partnered with the award-winning CINEMA 4D render engine to provide rendering capabilities that are faster and easier than standalone rendering applications. Renderworks® is fully integrated into Vectorworks Spotlight, so it lets you seamlessly visualize your work throughout the design process and produce clear and accurate renderings. With the click of a button, rendered viewports will update as your design evolves.

"From the initial concept of a show and early sketches to the final rendered proof, Vectorworks software is crucial to all of my designs. It helps me plan and develop all elements of the show, from positions of a set and scenery to ensuring that sight lines are not obstructed."
— David Lee, Lighting Designer, Lightscape Design, Ltd.



Courtesy of Steve Shelley

ABOUT NEMETSCHKE VECTORWORKS, INC.

A Tradition of Excellence

The company was founded in 1985, and the Vectorworks product line now serves more than 450,000 professional designers worldwide. We listen to our customers and use their feedback to create products that continually exceed their expectations, delivering superior design flexibility and world-class graphics.

Vectorworks is a cross-platform line of professional CAD software and the preferred application for world-renowned and award-winning designers like Beverly Emmons, Performance Environment Design Group LLC (PEDG), and Christien Methot, as well as countless others who power the design world forward every day.

Vectorworks Spotlight software is produced by Nemetschke Vectorworks, Inc., a wholly owned subsidiary of the Nemetschke Group, a leading global software provider for the architecture, engineering, and construction market (AEC). Vectorworks software is translated into 10 languages and is used by design professionals in 85 countries.



Courtesy of Patrick Immel

Nemetschek Vectorworks, Inc.
7150 Riverwood Drive, Columbia, MD 21046-1295 USA
www.vectorworks.net
T 410-290-5114 | F 410-290-8050

©2013 Nemetschek Vectorworks, Inc. All rights reserved.
Vectorworks, Renderworks, and MiniCAD are registered trademarks of Nemetschek Vectorworks, Inc.
SmartCursor and VectorScript are trademarks of Nemetschek Vectorworks, Inc.; X-ray Select (patent pending)

System Recommendations

Mac OS X 10.6.8 or later operating system
QuickTime 7.7.0 to 7.7.3 Intel Core 2GHz or better processor

Windows XP SP3 | Vista SP2 | Windows 7 SP1 | Windows 8 operating system
QuickTime 7.7.0 to 7.7.3
Pentium 2GHz or better processor DVD-ROM drive (dual layer)

RAM*

4GB or greater highly recommended
8GB recommended for large files and complex renderings

Graphics

1280x800 or greater recommended 512MB VRAM minimum, 1GB+ VRAM
recommended for high-quality rendering Support for OpenGL v2.1 or
greater for the best video card performance

*Vectorworks 2013 and Vectorworks 2014 contain improvements that place significantly higher demands on graphics hardware than previous versions. The performance and quality of the graphics provided by accelerated navigation and improved OpenGL shadows depend directly on the speed and memory of the graphics card. These new features have the potential to provide a very fast and fluid experience when used on capable hardware and a noticeably slower experience when used on older or incompatible hardware. In general, the more powerful your video card is, the better your Vectorworks experience will be.

For the most current and update technical information, please visit our Knowledgebase at <http://kbase.vectorworks.net>.

See www.vectorworks.net/sysreq/ for updated information.

Vectorworks® Spotlight

YOUR
VISIONS.
PERFECTLY
REALIZED.