

# Schell Scenic Studio, Inc.

## **Backdrop Recommendations List for the staging of Kiss Me Kate**

*Over a century of service to the  
entertainment industry.*  
EST. 1904





# Schell Scenic Studio, Inc.

841 South Front Street • Columbus, Ohio • 43206

TEL: (614) 444-9550

FAX: (614) 444-9554

## Kiss Me Kate



### 5-A. Godfrey Garden

*Hedge, pool and sidewalk leading to distance.*

39' x 21' - 30 lbs



### 11-C. European Street

*Stone buildings with tile roofs.*

39' x 21' - 33 lbs



### 11-I. Night Club or Ballroom

*Elegantly decorated room with arches, draperies, red carpet and bunting.*

38' x 21' - 32 lbs

## Did You Know?

Did you know that Schell Scenic Studio has been a cornerstone of the theatre community in Columbus, Ohio since 1904?

*Give us a call, and let us put a century of industry knowledge to work for you!*



### 15-I. Plain Interior

*Practical door opening 3'-0" W x 6'-7" H. Two painted windows (non-practical).*

39' x 19'6" - 27 lbs



### 30-IA. Basement

*Typical basement with radiators.*

43' x 21' - 37 lbs

All images Copyright © 2015 Schell Scenic Studio, Inc. Any reproduction without permission is strictly prohibited. Images are intended for reference only. Due to the variations in monitors and printers, accurate color representation is neither implied or guaranteed.



TEL: (614) 444-9550

FAX: (614) 444-9554

841 South Front Street • Columbus, Ohio • 43206

# Schell Scenic Studio, Inc.



## Kiss Me Kate



### 34-I. Castle Interior

43' x 20' - 38 lbs

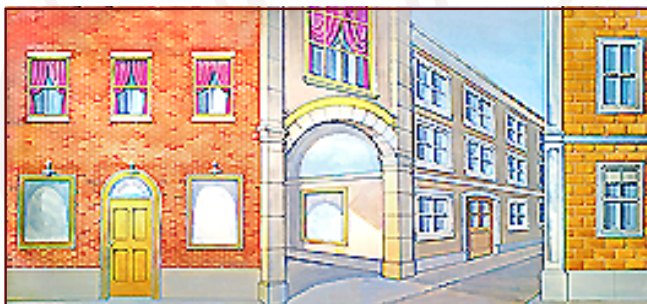
Arched opening leading to staircase and other corridors, windows off left and right of pillars.



### 48-D. Landscape

39' x 21' - 37 lbs

Rolling hills and scrub pines in foreground with open meadows in distance.



### 49. Stage Door Street

43' x 20' - 33 lbs

Alley and corner of building showing stage door entrance. Front door opening.

***Can't Find It?***

*Can't find what you need?  
Just give us a call!*

*Our friendly staff is here to help you find the  
backdrop you need for your next production.*

---



### 49-A. Stage Door Street

43' x 21' - 40 lbs

Street scene with non-practical stage door.



### 55. City Street

35' x 19'6" - 25 lbs

Circa 1940's. Building surrounding downtown intersection.

All images Copyright © 2015 Schell Scenic Studio, Inc. Any reproduction without permission is strictly prohibited.  
Images are intended for reference only. Due to the variations in monitors and printers, accurate color representation is neither implied or guaranteed.



# Schell Scenic Studio, Inc.

TEL: (614) 444-9550

FAX: (614) 444-9554

841 South Front Street • Columbus, Ohio • 43206

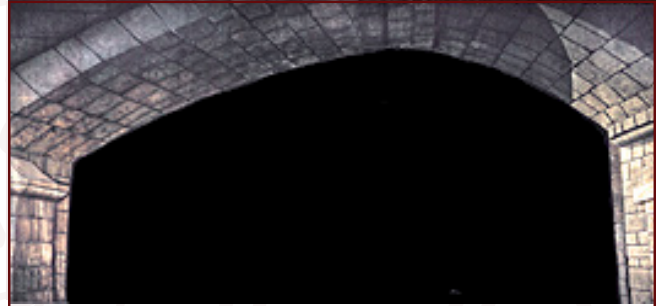
## Kiss Me Kate



### **73-H. Woods**

43' x 21' - 40 lbs

*Path crossing left to right through a clearing in a bright forest.*



### **98. Proscenium Arch**

46' x 24' - 63 lbs

*Painted stone arch on tan velour. Legs are 8' with 30' opening.*



### **104. Brick Wall**

43' x 22'6" - 37 lbs

*Brick wall painted on muslin.*



### **104-C. Brick Wall**

43' x 20' - 37 lbs

*Brick wall painted on muslin.*

## ***Don't Forget to Plan Your Rentals in Advance...***

*At Schell Scenic Studio we experience a number of "Peak Backdrop Rental Seasons" throughout the year. Because of this we recommend that you plan all of your backdrop rentals at least 6 - 12 months in advance. By planning your rentals in advance you decrease the risk of having to accept a substitute backdrop.*

*Thank you, and we look forward to assisting you on your next production!*

*- The Schell Scenic Studio*

All images Copyright © 2015 Schell Scenic Studio, Inc. Any reproduction without permission is strictly prohibited.  
Images are intended for reference only. Due to the variations in monitors and printers, accurate color representation is neither implied or guaranteed.



# Schell Scenic Studio, Inc.

## Backdrop Recommendations for

### Kiss Me Kate

These limited selections can help you get started finding the appropriate drops for your production or event.

Drops which have been provided for other customers include:

**#5-A, #11-C, ##11-I, #15-I, #30-IA, #34-I, #48-D,  
#49, #49-A, #55, #73-H, #98, #104, #104-C**

These are only suggestions from previous rentals.  
We have many more drops in our catalog which might better suit you style.

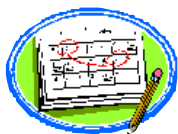
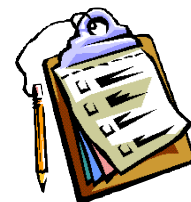


If you have an innovative and creative staging with our backdrops,  
please don't hesitate to contact us. We are always interested in the ways that  
our customers make use of our scenics.

***info@schellscenic.com***

These are only some of the hundreds of backdrops available at Schell Scenic Studio.  
These suggestions are the results of our customers' choices in our many years of service to the theatre.

# Things to Do Before You Call:



✓ **Have a calendar handy to check your dates.**

*Make sure you know the exact day you need the drops to arrive and when you can ship them out again.*

✓ **Plan your rentals in advance.**

*During peak backdrop rental seasons (ie. December, June, etc.) it may be necessary to place your rental order 6 - 12 months in advance.*

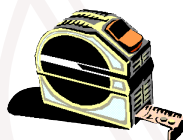


✓ **Have your Schell Scenic Catalog on hand.**

*Be sure you've reviewed our policies and procedures.*

✓ **Choose two or three back-up choices per backdrop.**

*Make sure you write down second or third choices per backdrop.*



✓ **Check the measurements of your stage and the drops you are renting.**

*Schell Scenic drops come in different dimensions. Make sure that your selected drops will fit your venue.*



✓ **Have a credit card ready.**

*To place a reservation on a backdrop you may be asked to do so with a major credit card.*

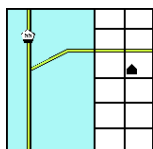


✓ **Get a purchase order number.**

*Some organizations require that we place their purchase order numbers on invoices.*

✓ **Write down your Schell order number.**

*We will use this number to access individual orders. **Note: Your signed confirmation is required before your order is ready to process.***



✓ **Know your business address.**

*UPS can not guarantee timely delivery to residential addresses. This could cause the backdrops to arrive to you later than expected.*