

SHELL SCENIC STUDIO, INC.

**Backdrop
Recommendations List
for the staging of**

The Secret Garden

*Over a Century of Service to the
Entertainment Industry*
EST. 1904





SCHELL SCENIC STUDIO, INC.

TEL: (614) 444-9550

FAX: (614) 444-9554

841 S. Front St. • Columbus, Ohio • 43206

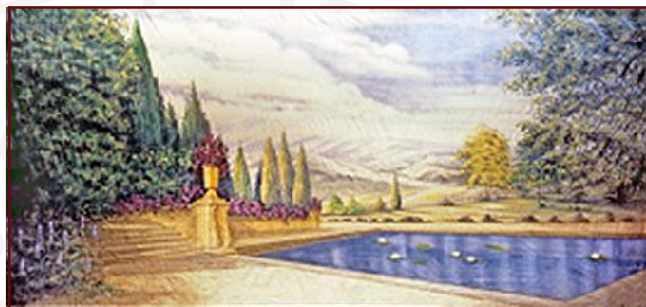
The Secret Garden



3. Rose Garden with Openings

43' x 20' - 40 lbs

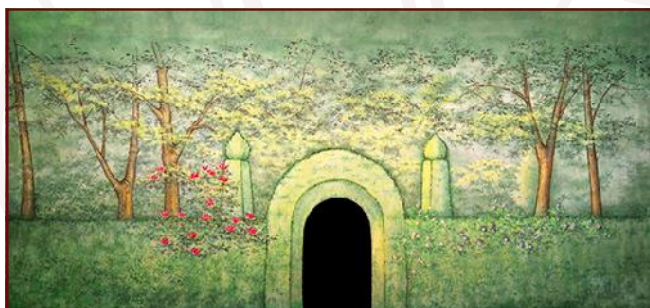
Practical openings of varied sizes through shrubbery.



5-C. Garden

43' x 21' - 38 lbs

Sidewalks with pond and fields in distance.



6. Hedge Garden

38' x 20'6" - 38 lbs

Practical center arch is 4' wide by 7'8" tall.

Don't Know What You Need?

So, you have a big production coming up,
but you don't know what you need...

Give us a call, that's why we're here!

*We would be happy to recommend a selection
of backdrops that meet your specific needs!*



40-A. Lattice Garden

43' x 21' - 37 lbs

Lattice with removable center arch opening.



46-C. Plantation

30' x 14' - 22 lbs

Front of traditional mansion framed by trees.

All images Copyright ©2005 - 2015 Schell Scenic Studio, Inc. Reproduction without permission is strictly prohibited.
Images are intended for reference use only. Due to variations in monitors and printers, accurate color representation is neither implied nor guaranteed.
All Images are low resolution, and will become pixelated if viewed above 200% magnification. Higher resolution photos are not available.

TEL: (614) 444-9550

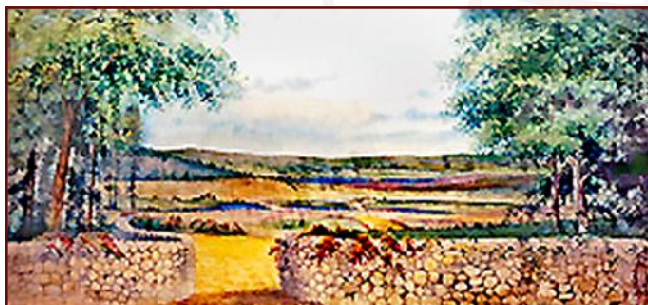
FAX: (614) 444-9554

SHELL SCENIC STUDIO, INC.

841 S. Front St. • Columbus, Ohio • 43206



The Secret Garden



48-C. Irish Landscape

39' x 21' - 33 lbs

Gently rolling hills are seen over stonewall with gate.



53. Garden

38' x 21' - 40 lbs

Formal garden with stone wall, steps, and pool. Buildings in distance.

Did You Know?

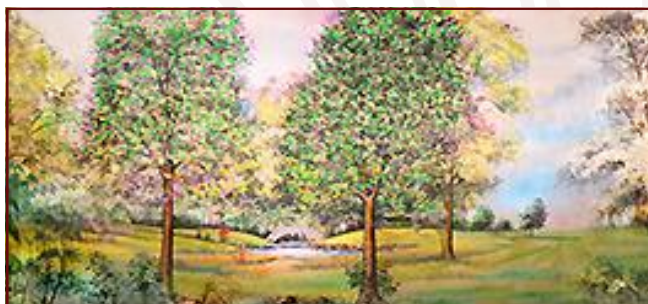
Did you know that Schell Scenic Studio has been a cornerstone of the theatre community in Columbus, Ohio since 1904?

Give us a call, and let us put a century of industry knowledge to work for you!



62-E. Foliage Leg & Border (3) 27' x 20' - 32 lbs (per set)

Natural foliage legs and border. Borders overlap in center for desired opening.



65-A. Spring Landscape

43' x 21' - 35 lbs

Spring landscape with trees and path in foreground.



65-AB. Spring Landscape

30' x 16' - 25 lbs

Spring landscape with trees and path in foreground.

All images Copyright ©2005 - 2015 Schell Scenic Studio, Inc. Reproduction without permission is strictly prohibited.

Images are intended for reference use only. Due to variations in monitors and printers, accurate color representation is neither implied nor guaranteed.

All Images are low resolution, and will become pixelated if viewed above 200% magnification. Higher resolution photos are not available.



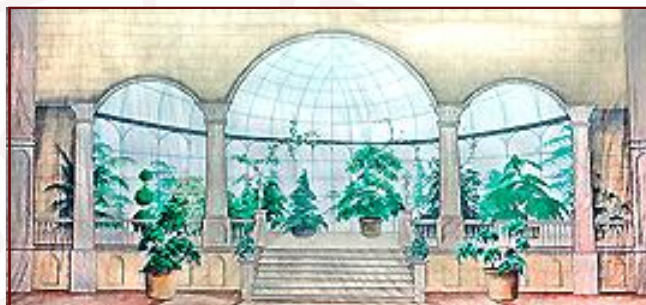
The Secret Garden



73-A. Woods

30' x 16' - 22 lbs

Dense woods with shafts of sunlight piercing through heavy top foliage.



74-A. Conservatory

43' x 21' - 40 lbs

Romanesque arches lead to greenhouse with flowers and foliage.



78. Sky & Wall

38' x 20' - 37 lbs

Stone wall with flowering vines and practical center arch. Opening is 4'W x 10'H approx.



97-AB. Sky & Clouds

40' x 16' - 28 lbs

Clouds on a blue background.

Don't Forget to Plan Your Rentals in Advance...

At Schell Scenic Studio we experience a number of "Peak Backdrop Rental Seasons" throughout the year. *Because of this we recommend that you plan all of your backdrop rentals at least 6 - 12 months in advance. By planning your rentals in advance you decrease the risk of having to accept a substitute backdrop.*

Thank you, and we look forward to assisting you on your next production!

- The Schell Scenic Studio

All images Copyright ©2005 - 2015 Schell Scenic Studio, Inc. Reproduction without permission is strictly prohibited. Images are intended for reference use only. Due to variations in monitors and printers, accurate color representation is neither implied nor guaranteed. All Images are low resolution, and will become pixelated if viewed above 200% magnification. Higher resolution photos are not available.

Schell Scenic Studio, Inc.

Backdrop Recommendations for

The Secret Garden

These limited selections can help you get started finding the appropriate drops for your production or event.

Drops which have been provided for other customers include:

**#3, #5-C, #6, #40-A, #46-C, #48-C, #53, #62-E, #65-A,
#65-AB, #73-A, #74-A, #78, #97-AB**

These are only suggestions from previous rentals.
We have many more drops in our catalog which might better suit your style.

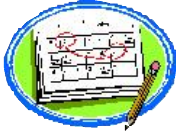
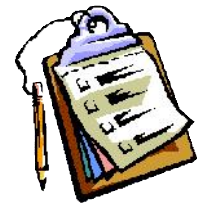


If you have an innovative and creative staging with our backdrops,
please don't hesitate to contact us. We are always interested in the ways that
our customers make use of our scenics.

info@schellscenic.com

These are only some of the hundreds of backdrops available at Schell Scenic Studio.
These suggestions are the results of our customers' choices in our many years of service to the theatre.

Things to Do Before You Call:



✓ **Have a calendar handy to check your dates.**

Make sure you know the exact day you need the drops to arrive and when you can ship them out again.

✓ **Plan your rentals in advance.**

During peak backdrop rental seasons (ie. December, June, etc.) it may be necessary to place your rental order 6 - 12 months in advance.

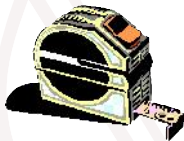


✓ **Have your Schell Scenic Catalog on hand.**

Be sure you've reviewed our policies and procedures.

✓ **Choose two or three back-up choices per backdrop.**

Make sure you write down second or third choices per backdrop.



✓ **Check the measurements of your stage and the drops you are renting.**

Schell Scenic drops come in different dimensions. Make sure that your selected drops will fit your venue.



✓ **Have a credit card ready.**

To place a reservation on a backdrop you may be asked to do so with a major credit card.

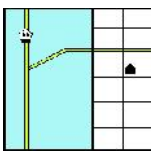


✓ **Get a purchase order number.**

Some organizations require that we place their purchase order numbers on invoices.

✓ **Write down your Schell order number.**

*We will use this number to access individual orders. **Note: Your signed confirmation is required before your order is ready to process.***



✓ **Know your business address.**

UPS can not guarantee timely delivery to residential addresses. This could cause the backdrops to arrive to you later than expected.