

Schell Scenic Studio, Inc.

Backdrop Recommendations List for the staging of **South Pacific**



*Over a century of service to the
entertainment industry.*
EST. 1904



South Pacific



12. Spanish Garden

Tropical foliage with sidewalk and pool.

43' x 20' - 32 lbs



13. Tropical Jungle

Dense foliage.

40' x 21' - 40 lbs



14. Tropical Jungle Village

Straw huts and beach framed by natural foliage.

43' x 20' - 40 lbs



15-B. Tropical Village

Bamboo huts with thatched roofs and palm trees.

43' x 20' - 30 lbs



15-C. Tropical Beach

Tropical foliage, sand and hill in distance.

43' x 19' - 38 lbs



47. Tropical Island

Tropical foliage on beach with ocean and mountains in distance.

43' x 20" - 45 lbs

All images Copyright © 2005 - 2008 Schell Scenic Studio, Inc. Reproduction without permission is strictly prohibited.
Images are intended for reference only. For color renditions of these backdrops, please visit www.SchellScenic.com to download our catalog.

TEL: (614) 444-9550

FAX: (614) 444-9554

841 South Front Street ♦ Columbus, Ohio ♦ 43206

Schell Scenic Studio, Inc.



South Pacific



47-A. Tropical Island

42' x 21' - 41 lbs

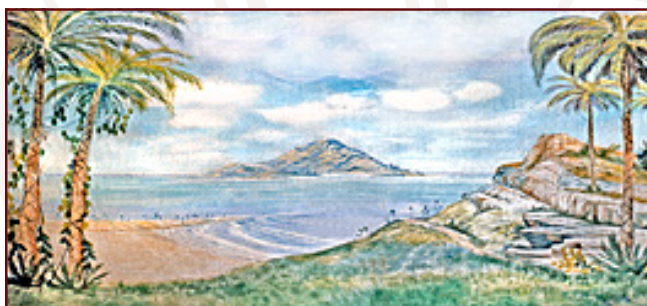
Sandy beach with ocean in foreground. Volcano in near distance.



52. Tropical Island

38' x 20' - 40 lbs

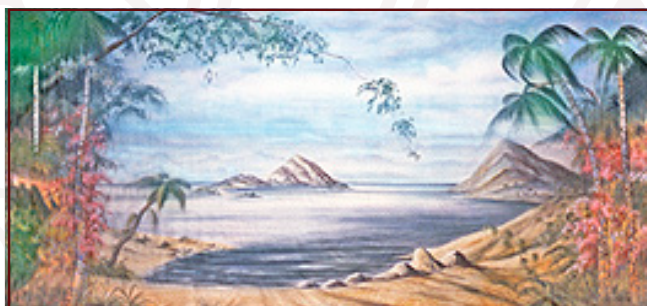
Tropical foliage and coastline overlooking Bali Hai.



52-A. Tropical Island Scrim

29' x 21' - 15 lbs

Tropical foliage and coastline overlooking Bali Hai. Painted on scrim.



92. Tropical

43' x 20'6" - 45 lbs

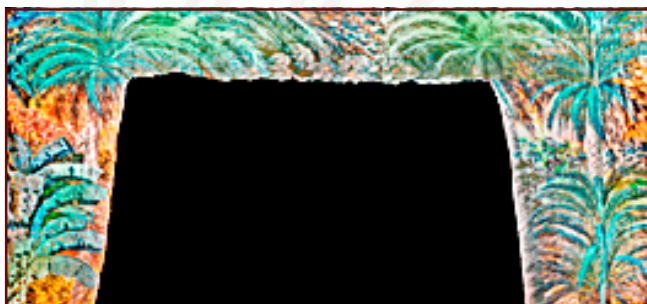
South Seas island and shoreline looking out into a bay. Mountainous island in the background, and palm trees in foreground.



92-A. Bali Hai

43' x 20' - 38 lbs

Volcano seen in distance from tropical shoreline.

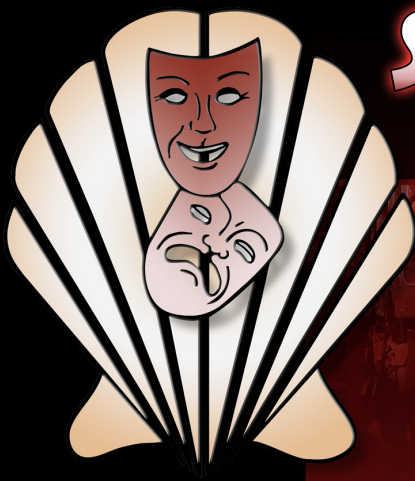


93. Tropical Leg Drops

(2 sets) 46' x 21' - 25 lbs (each set)

Tropical foliage legs. Border is 6' high, average width of legs is 9', with 30' openings.

All images Copyright © 2005 - 2008 Schell Scenic Studio, Inc. Reproduction without permission is strictly prohibited.
Images are intended for reference only. For color renditions of these backdrops, please visit www.SchellScenic.com to download our catalog.



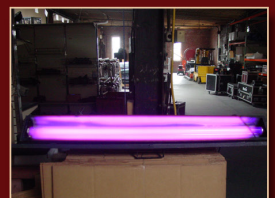
SHELL SCENIC STUDIO

IS MORE THAN JUST BACKDROPS!

Sure, you know Schell Scenic Studio as the place to go for your theatrical backdrops, but have you explored the many other services that Schell has to offer?

- Digital Design Studio
- Large-Format Digital Printing Shop
- Lighting Equipment & Accessories
- Special Effects
- Stage Props & Accessories
- And Much More!

Call today and learn how we can help you in all aspects of your next theatrical production!



Schell Scenic Studio, Inc.

Backdrop Recommendations for South Pacific

These limited selections can help you get started finding the appropriate drops for your production or event.

Annie

Scenic Backdrop #

The action takes place on two islands in the South Pacific during World War II. There is a week's time elapsed between Act I and Act II.

Act I

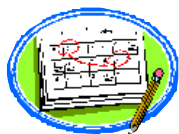
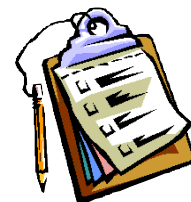
Scene 1: The terrace of Emile de Becque's plantation #12, #13, #14, #47, #47-A, #93
Scene 2: The beach #15-B, #15-C, #47, #47-A
Scene 3: Island of Bali Hai #52, #52-A, #92, #92-A, #93
Scene 4: The terrace of Emile's plantation #12, #13, #14, #47, #47-A, #93

Act II

Scene 1: The stage for "Thanksgiving Follies"
Scene 2: A radio shack on the beach #14, #15-B

These are only some of the hundreds of backdrops available at Schell Scenic Studio.
These suggestions are the results of our customers' choices in our many years of service to the theatre.

Things to Do Before You Call:



✓ **Have a calendar handy to check your dates.**

Make sure you know the exact day you need the drops to arrive and when you can ship them out again.

✓ **Plan your rentals in advance.**

During peak backdrop rental seasons (ie. December, June, etc.) it may be necessary to place your rental order 6 - 12 months in advance.

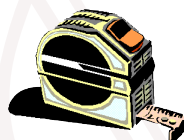


✓ **Have your Schell Scenic Catalog on hand.**

Be sure you've reviewed our policies and procedures.

✓ **Choose two or three back-up choices per backdrop.**

Make sure you write down second or third choices per backdrop.



✓ **Check the measurements of your stage and the drops you are renting.**

Schell Scenic drops come in different dimensions. Make sure that your selected drops will fit your venue.



✓ **Have a credit card ready.**

To place a reservation on a backdrop you may be asked to do so with a major credit card.

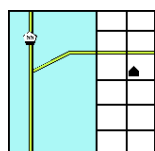


✓ **Get a purchase order number.**

Some organizations require that we place their purchase order numbers on invoices.

✓ **Write down your Schell order number.**

*We will use this number to access individual orders. **Note: Your signed confirmation is required before your order is ready to process.***



✓ **Know your business address.**

UPS can not guarantee timely delivery to residential addresses. This could cause the backdrops to arrive to you later than expected.