

First State Bank kit in HO scale



Parking lot base and cars not included

This kit includes all building parts milled in white styrene plastic, laser cut white acrylic, Plastruct mirror glass and clear acrylic window glazing. All parts fit together but may need light sanding in joints for cosmetic reasons. The model needs painting.

Some model building and painting skills are required.

Manufactured by Custom Cuts by 

Summit USA LLC, 512A Ford Street, Lake Charles, LA 70601

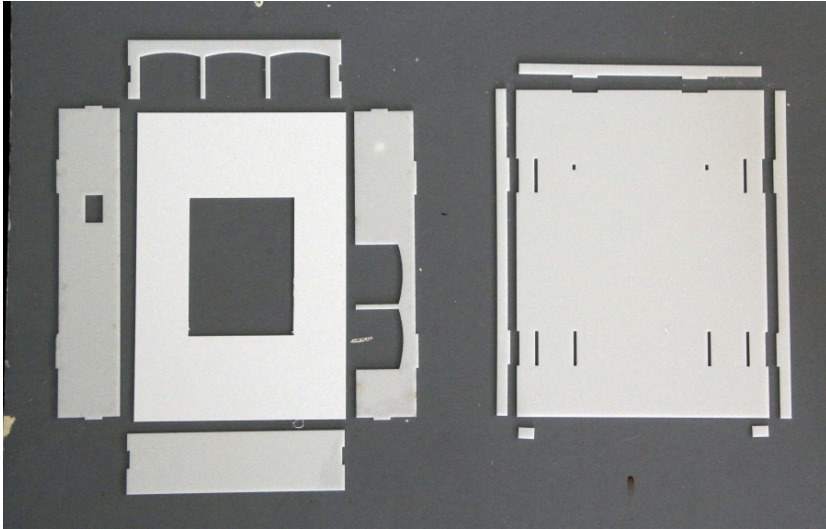
Assembly instructions for First State Bank kit

Thank you for buying this First State Bank kit. Please take some time to read these instructions before you begin assembling.

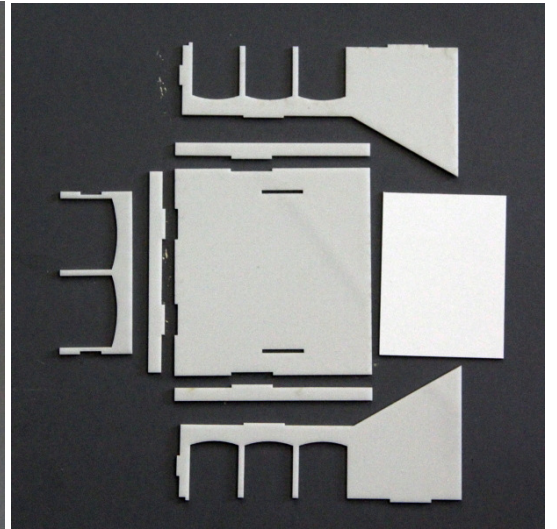
This kit is milled in styrene plastic and laser cut acrylic and is very easy to glue together using Plastruct Plastic Weld. The wall parts are tabbed and slotted for easier assembly.

Take your time to identify all parts, lay them out as on the pictures and clean them for any burrs before you start gluing them together.

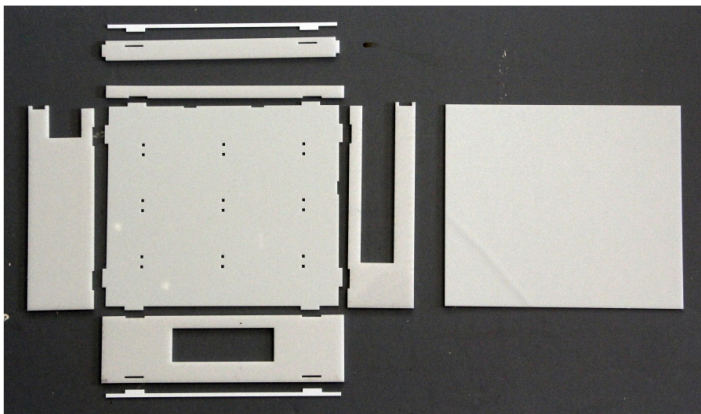
Handle the acrylic parts with care; they are easier breakable than the styrene parts.



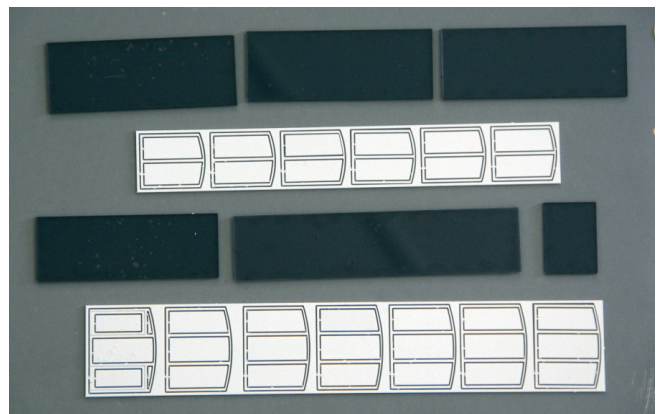
First floor base, walls and roof



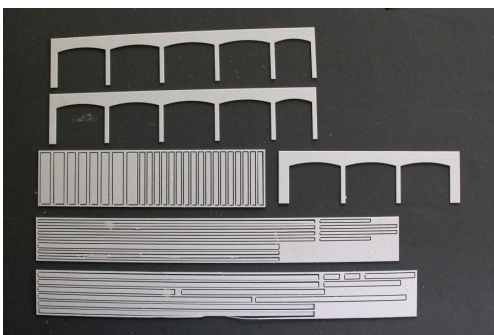
Second floor walls and roof



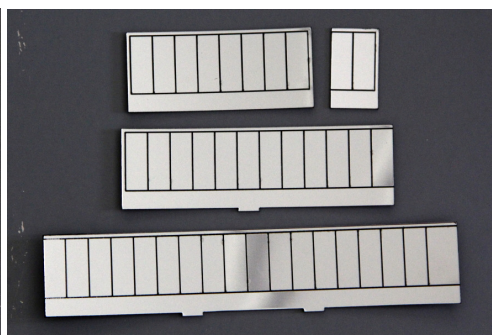
Elevated section



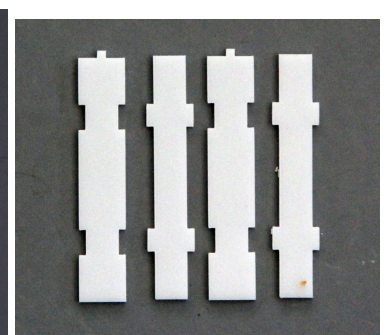
Window frames and glazing



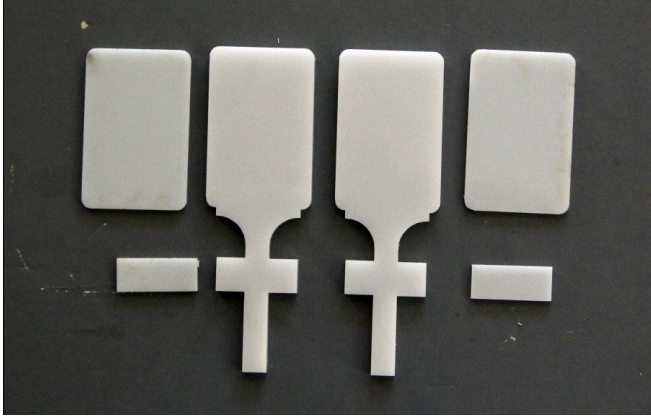
Wall trim and roof trim strips



Mirror glass sections



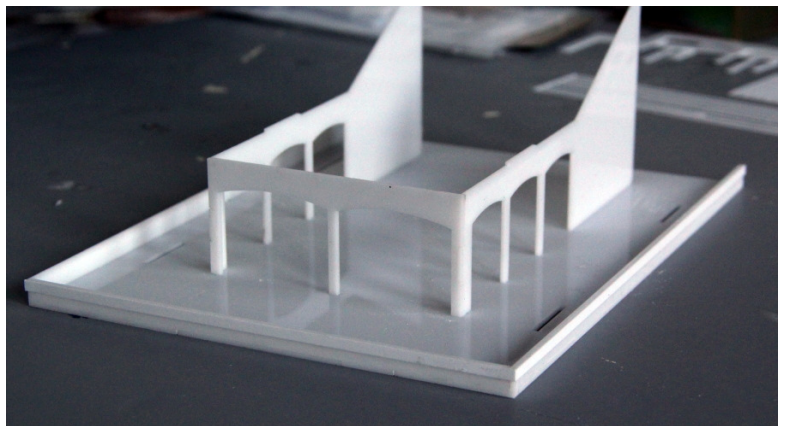
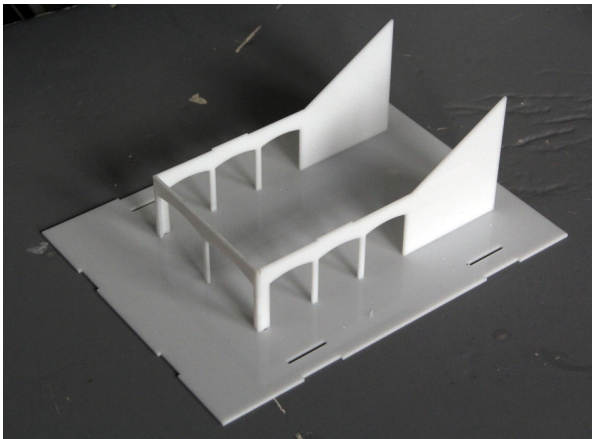
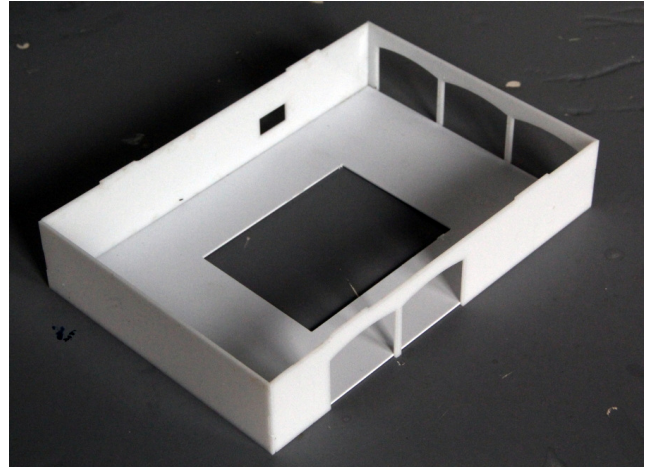
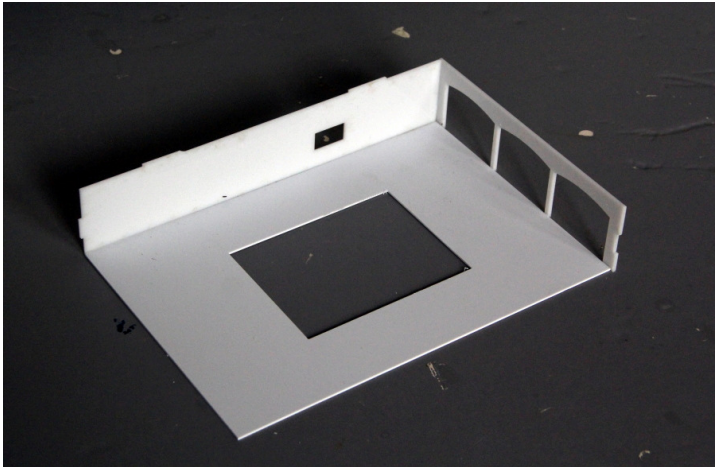
Columns, 9 sets



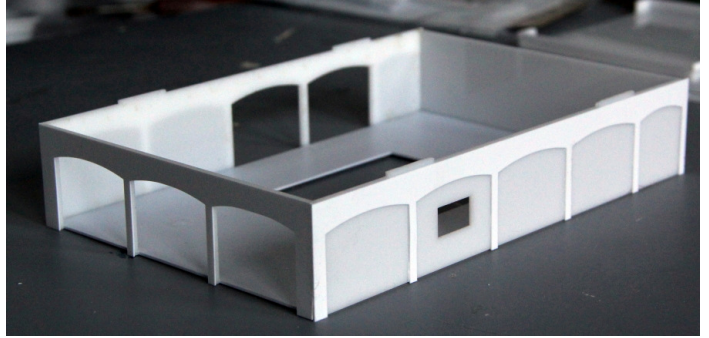
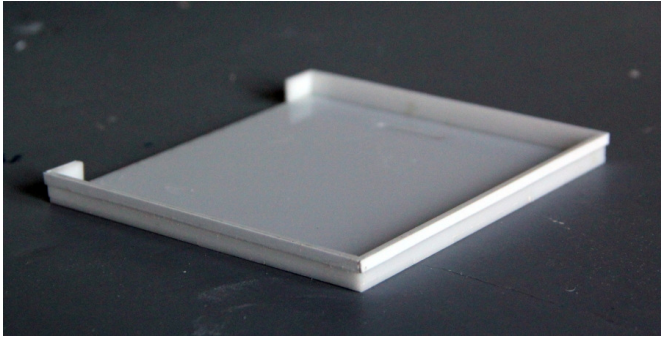
Street sign parts

Assembly:

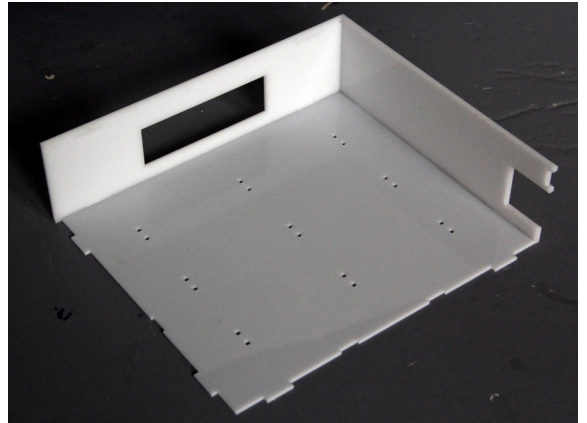
Start by assembling the wall sections as shown in the pictures. You must glue the walls to the outside edge of the base plate. Let the wall sections dry for at least 15 minutes, the glue takes much longer to set on the acrylic parts than on styrene.



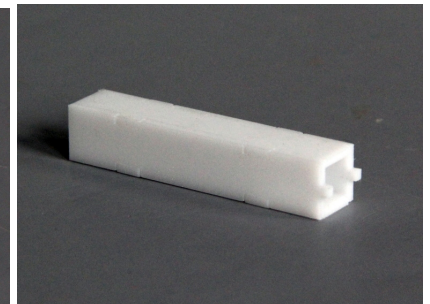
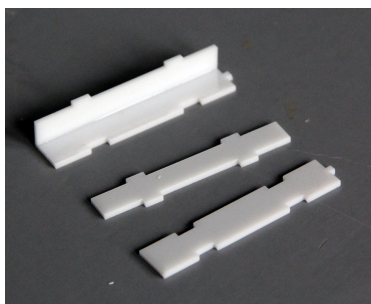
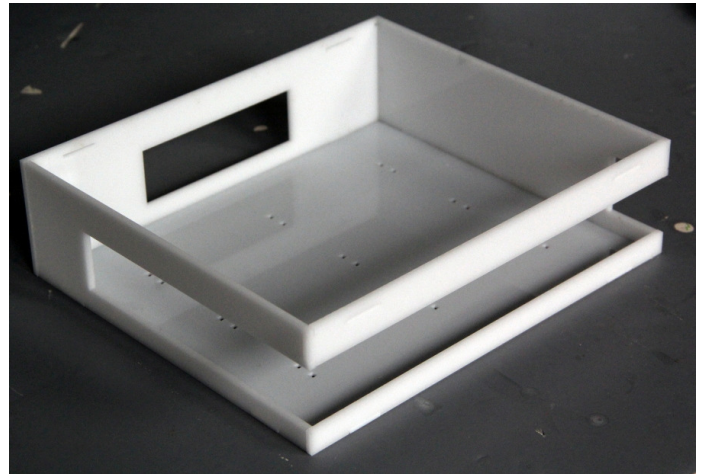
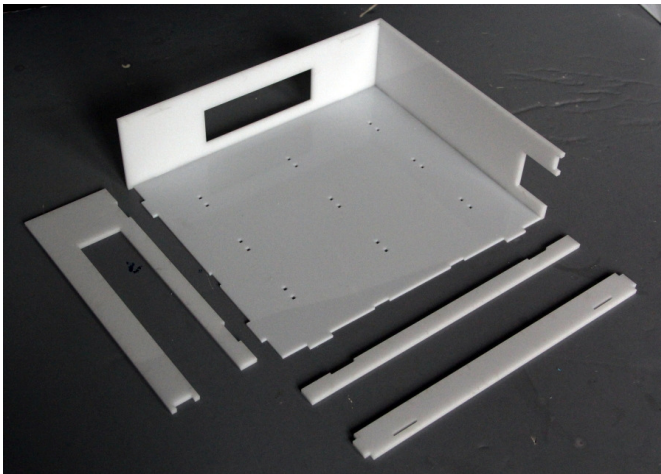
Glue the trim strips to the roof side aligning with the upper edge as shown.



Glue the wall trim onto the walls, the side trim overlaps the front trim.

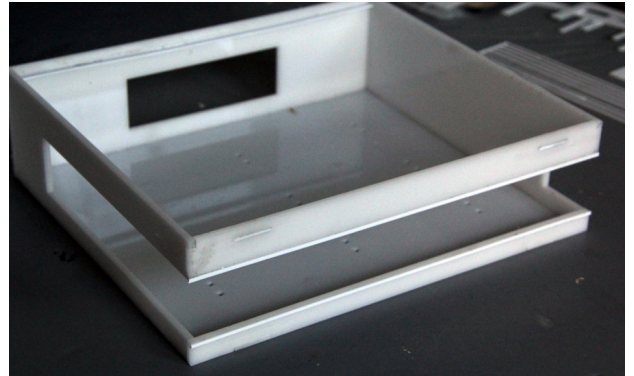


Glue the vertical trim strips onto the wall as shown, being careful to select the correct corner pieces. Assemble the elevated section as shown.

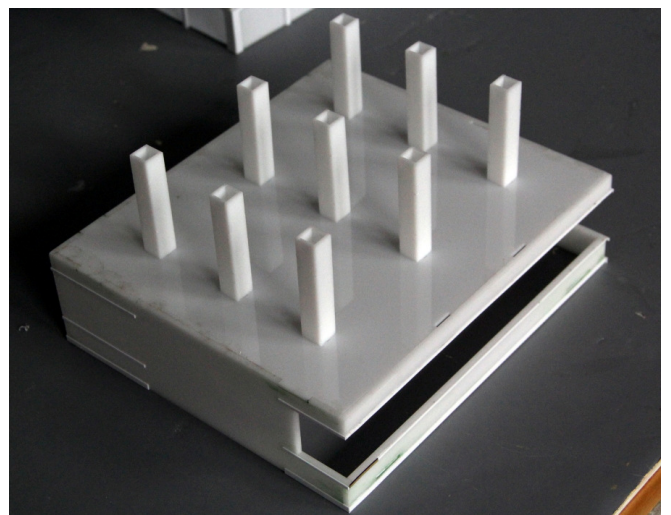
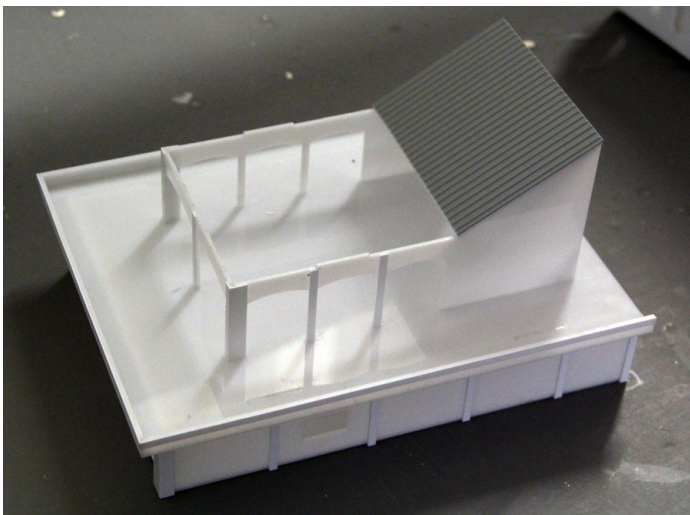


Mount the roof support strips inside the wall and assemble the columns.

At this point you may want to sand the corners and fill small gaps with filler. Sand smooth when the filler is dry.



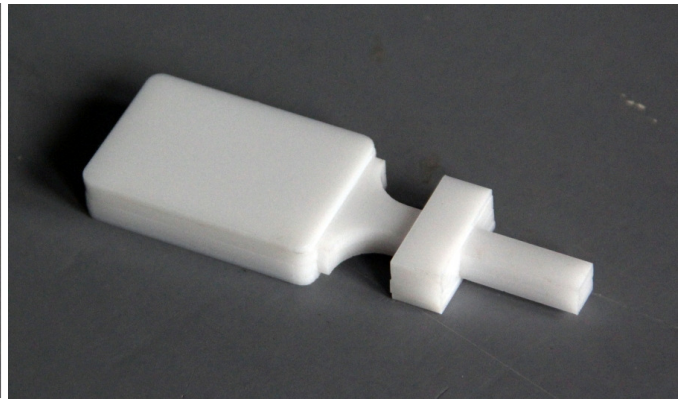
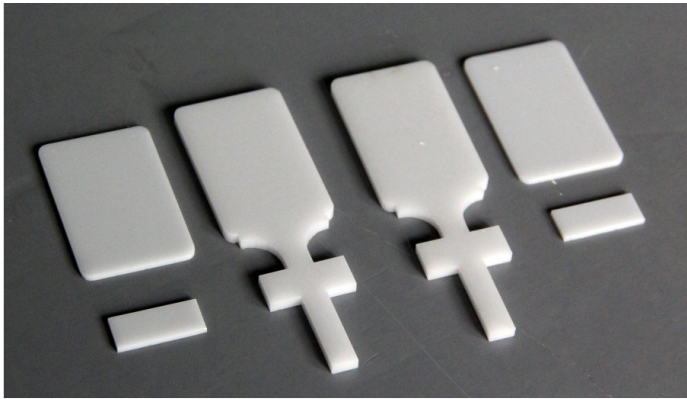
Mount the trim strips on the walls, the window sides have strips all the way across, for the stairwell side see the picture below.



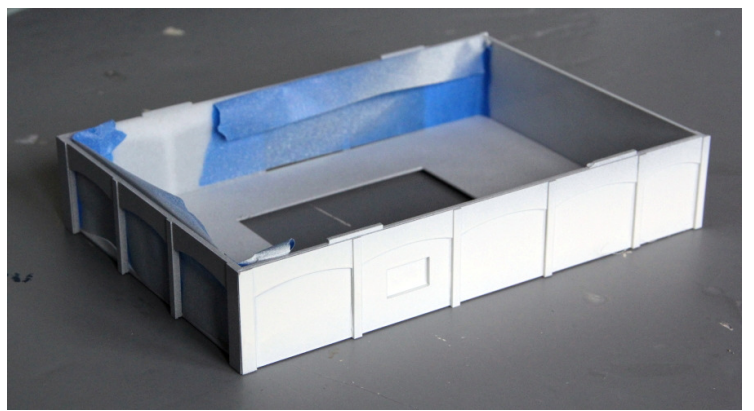
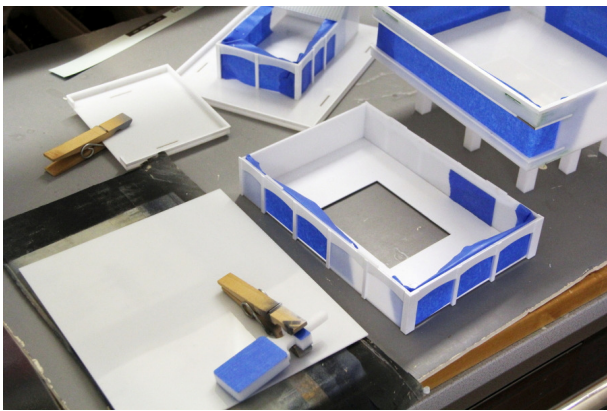
Use the slanted roof piece as a template for cutting the metal roofing to fit, then glue them both on. Mount all the columns in the holes in the floor.



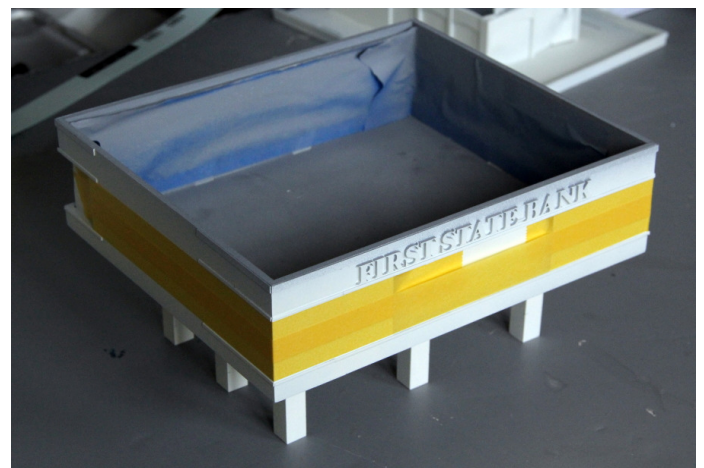
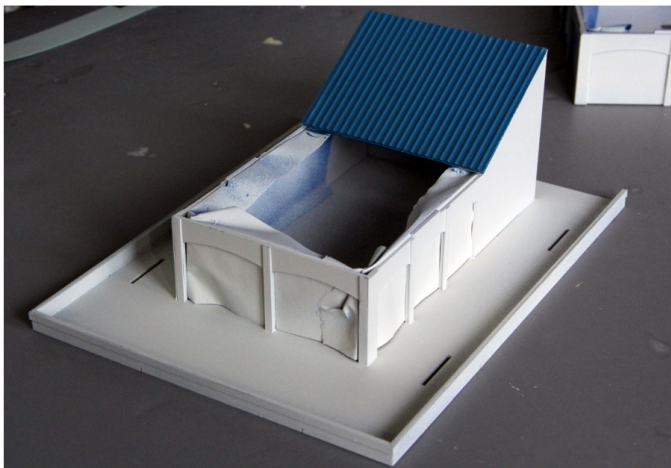
Carefully glue the wall sign on the wall, centering it with the window opening as shown.



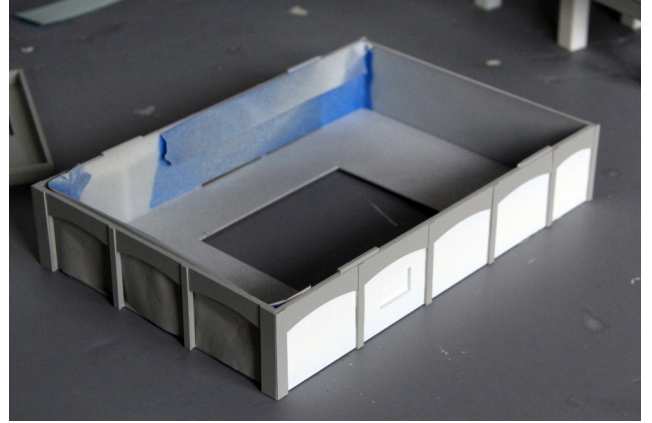
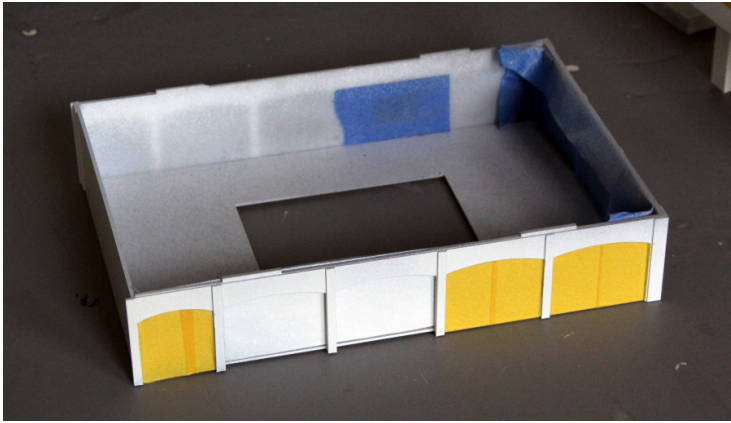
Assemble the four layer of the street sign as shown. Sand the edges smooth until the laminated layers are no longer visible.



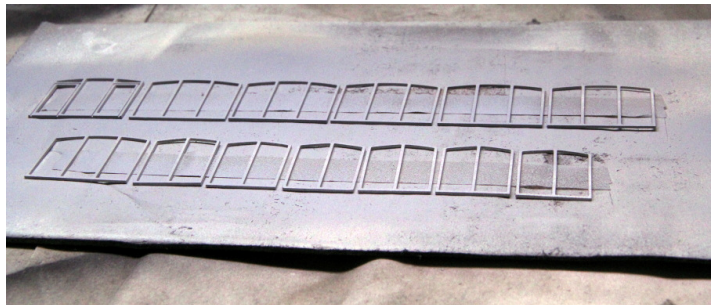
Mount some masking tape over the window openings inside the walls and mask the street sign faces, then spray all the parts with a good coat of primer. When the primer has dried, spray the walls white.



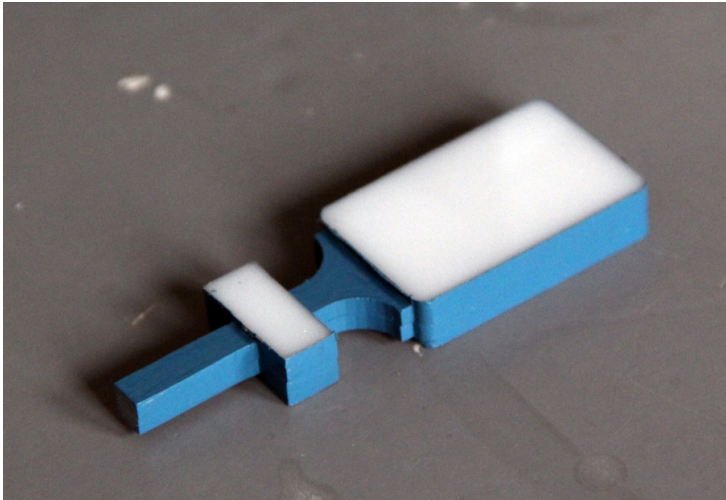
Brush paint the corrugated roof blue. Cover the walls between the trim strips of the elevated section with masking tape, also cover the columns.



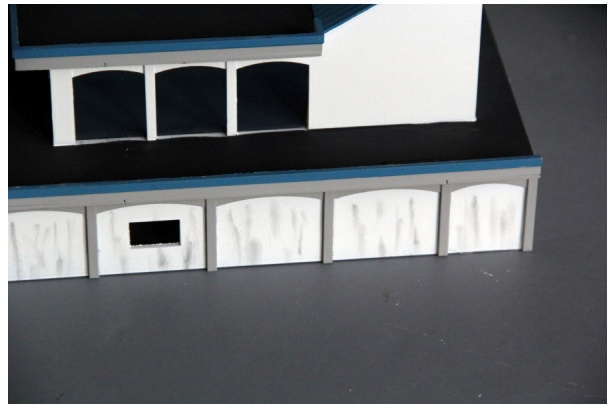
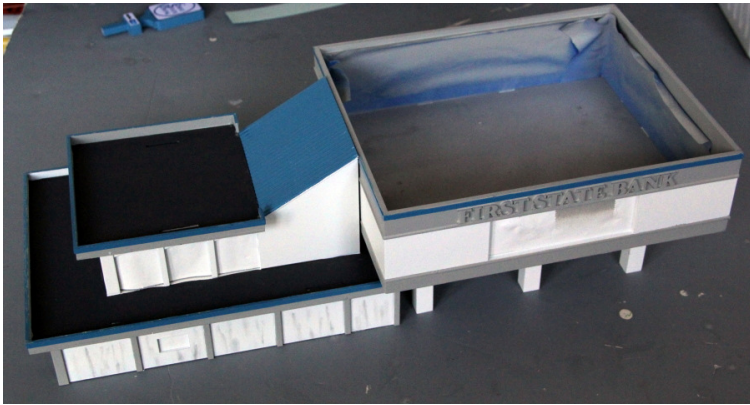
Mask the wall sections as shown, then paint the 1st floor walls, the elevated section walls, and the roof edges light gray. When dry, paint the roof trim strips blue, Paint the roof top surfaces dark gray..



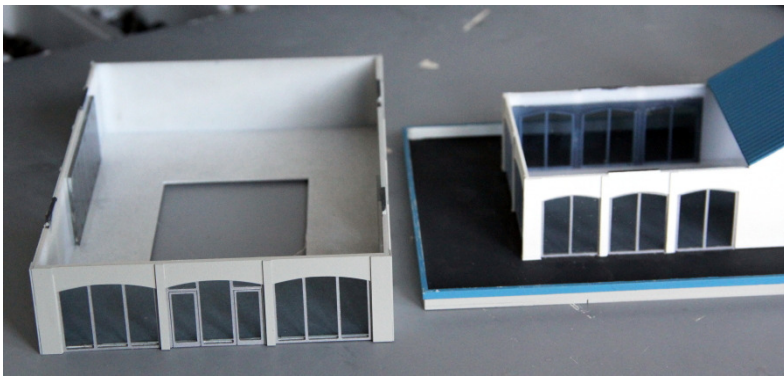
Place the window frames on a piece of cardboard with double-sided tape and paint them aluminum.



Paint the edges of the street sign blue. Cut out the decals using a sharp hobby knife and a steel ruler. Peel off the backing paper and mount the sign decals.



Brush some weak stripes of black weathering powder on the wall sections to simulate marble, the spray the complete building a solid coat of Testors Dull Cote



Glue the window glazing on the inside of the building. Mount the window frames, they should be a tight fit so you do not need to glue them. Paint the top of the wall sign with a black Sharpie marker.



Here are e few pictures of the finished model.





Here is the prototype in Livingston, Texas

Enjoy your First State Bank House on your layout.

Here are some other products you may enjoy in a future project:



#SMFS Summit Motel, full version



#DP-001 Domino's Pizza take-out



#CS-001 Dave's Coffee Shop



#TB-001 Taco Bell Restaurant



#TB-003 New Taco Bell Restaurant



#KFC-001 KFC Restaurant



#CVS-001 CVS Pharmacy



#LO-001 Lowe's backdrop building



Mall complex



#ML-001 Strip Mall backdrop building #1



#ML-002 Strip Mall backdrop building #2



#ML-003 Office Depot backdrop building



#ML-004 Mall street sign



#ML-005 Pier 1 Imports backdrop building



#ML-006 Dollar Tree backdrop building



#EX-001 Exxon Gas Station & Store



#SW-001 Subway Restaurant



#WH-001 Waffle House Restaurant



#SC-001 Rural Shamrock Gas Station & Store



#SH-001 Shell Gas Station & Store



#DG-001 Dollar General Store



#MH-001 Modern Manufactured Home



#GS-001 Arco Gas Station backdrop



#FS-001 Modern City Fire Station



#JL-001 Jiffy Lube

Keep updated for new products on our website: www.summit-customcuts.com