

CVS Pharmacy kit in HO scale



Parking lot base and cars not included

This kit includes all building parts and wall-mounted signs milled in white styrene plastic, clear window glazing and pre-cut Plastruct brick strips. All parts fit together but may need light sanding in joints for cosmetic reasons. The model needs painting.

Some model building and painting skills are required.

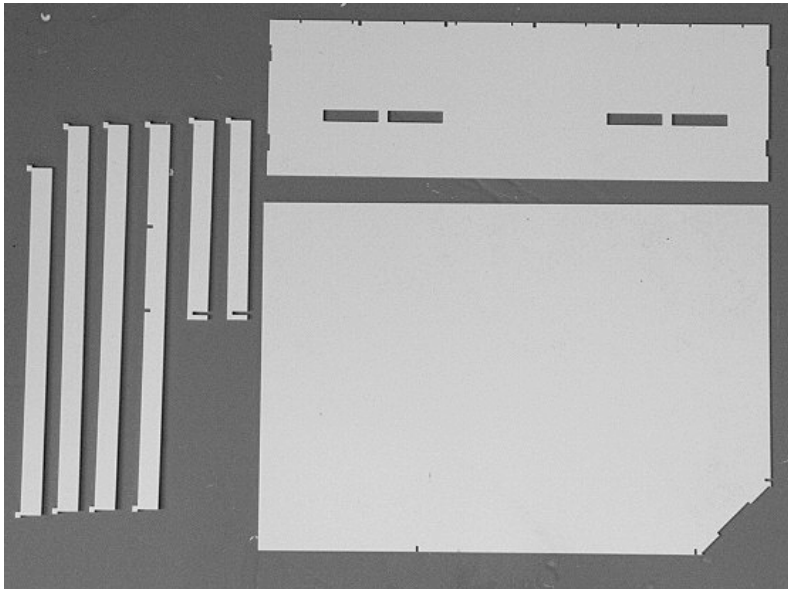
Manufactured by Custom Cuts by 

Summit USA LLC, 512 Ford Street, Lake Charles, LA 70601

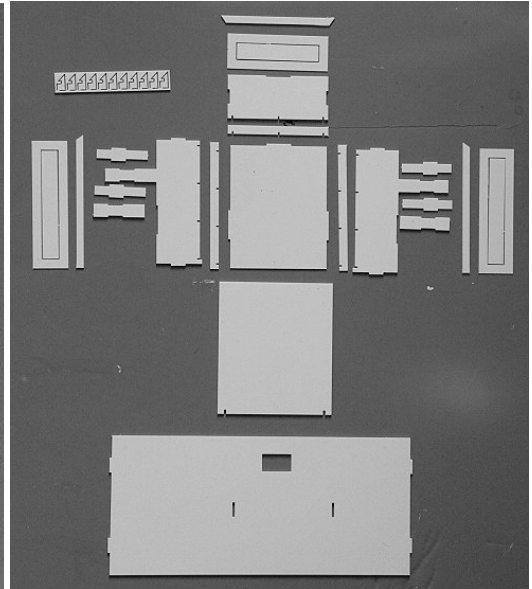
Assembly instructions for CVS Pharmacy kit

Thank you for buying this CVS Pharmacy kit. Please take some time to read these instructions before you begin assembling.

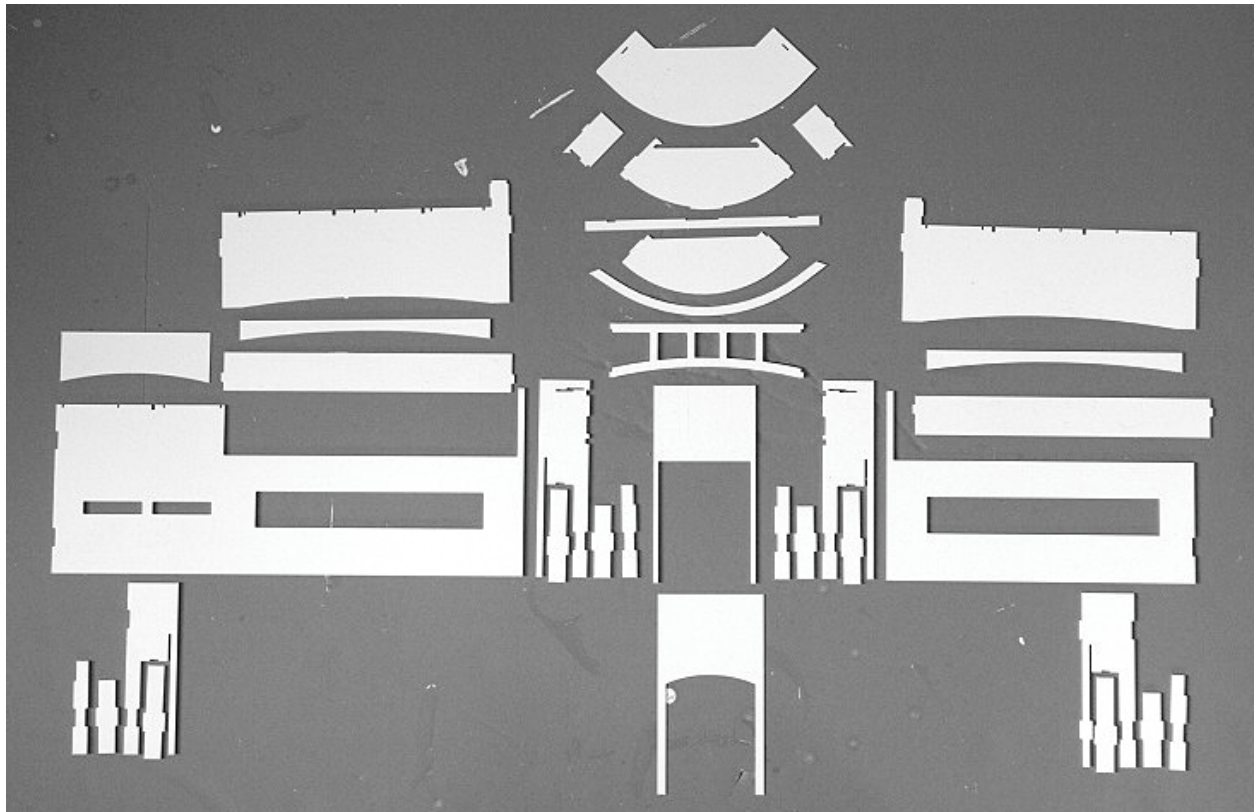
This kit is milled in styrene plastic and is very easy to glue together using Plastruct Plastic Weld or similar glue products. The wall parts are tabbed and slotted for easier assembly. Take your time to identify all parts, lay them out as on the pictures and clean them for any burrs before you start gluing them together. Pay great attention when you lay out the parts, some parts look similar but vary in length and width.



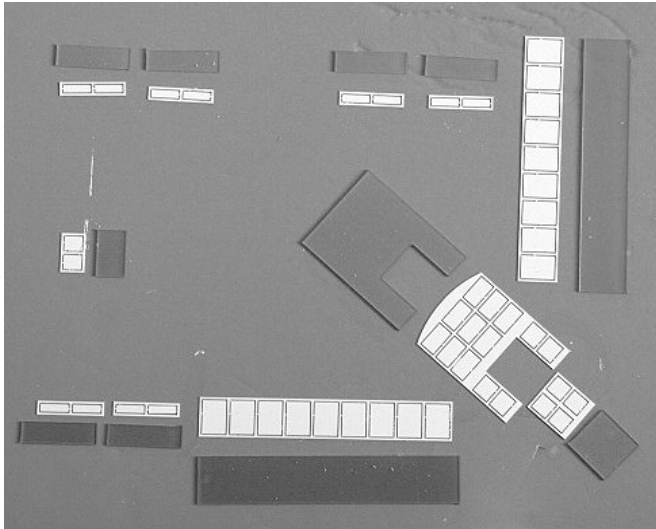
Base, long rear wall and roof supports



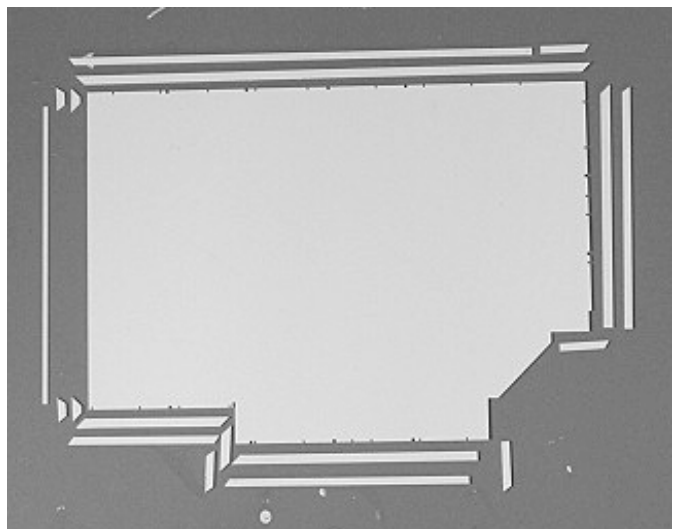
Drive-thru canopy and short rear wall



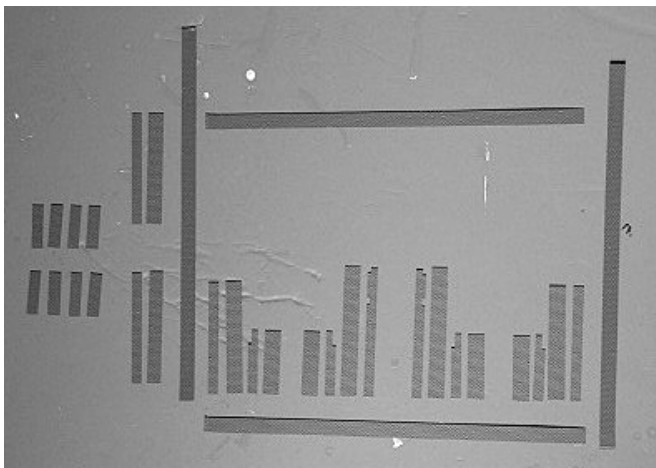
Front wall, entrance corner, side wall and columns



Window frames and clear acrylic glazing



Roof and top trim strips



All the column bricks are pre-cut. For the bricks on the bottom of the walls, you will have to cut the large brick sheet into 4 long strips, each strip must be 10 brick rows high. Carefully cut in the mortar line and support your knife with a steel ruler.

The first decision you have to make is the orientation of the building, meaning if the long side shall extend to the right or left side of the entrance corner. These instructions show the left version. Identify the front (long wall) facade piece - the piece with arced bottom and 3 big notches on the top edge.

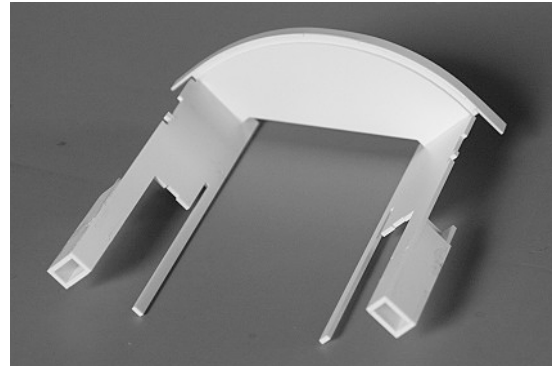
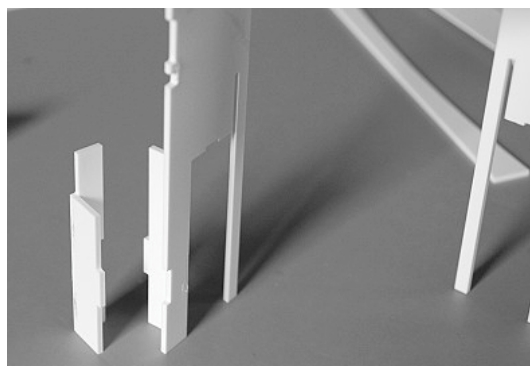
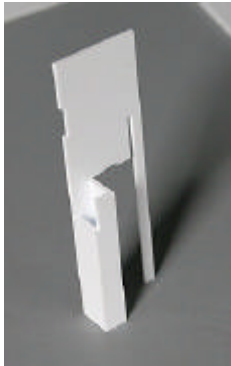
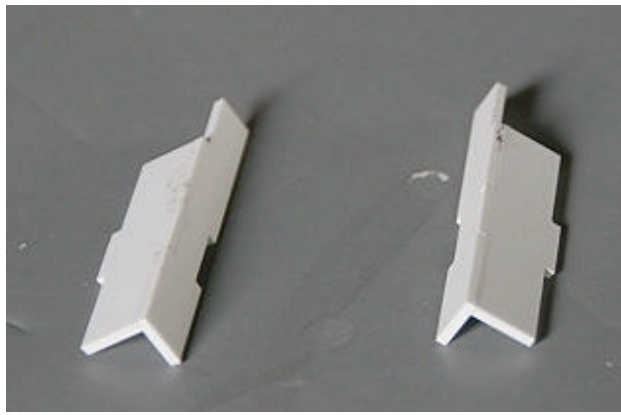
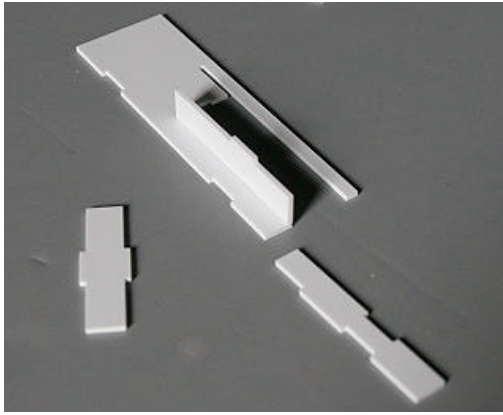
Begin with assembling the entrance corner. There are 2 pieces with a quarter circle, the one on the picture below and one with wide notches. The one with notches goes on top and both fit in the slots in the side pieces.



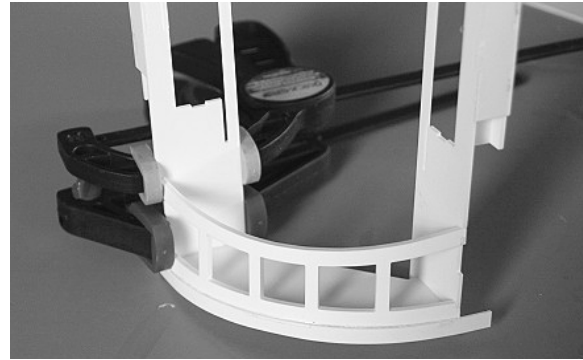
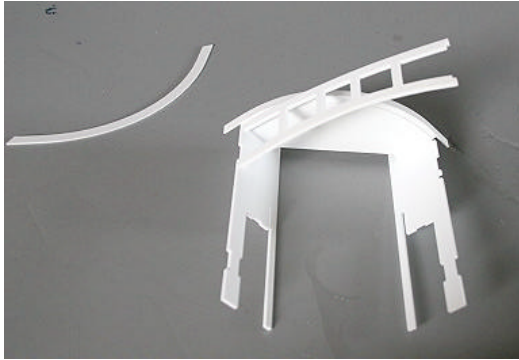
Glue on the other side piece and the top strip with matching notches .



Assemble the 4 columns with the shortest piece facing outward. Be aware of the orientation of each column. The notch in the long piece is facing outward. See picture on the next page.

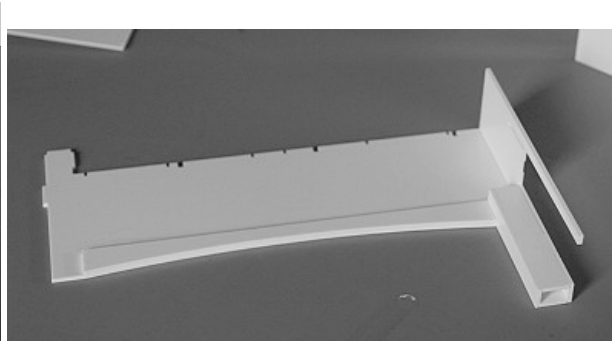
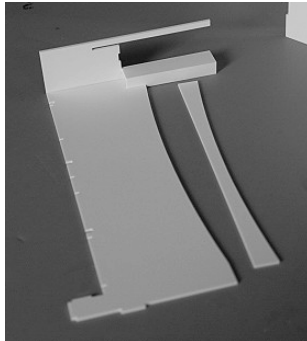
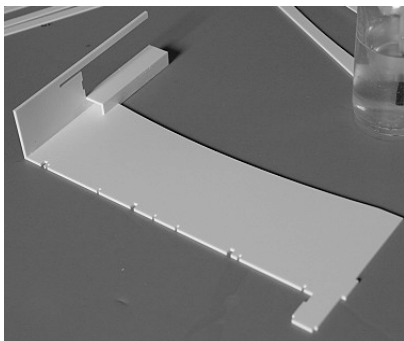


Pre-bend the front trim "ladder" around a round object (i.e. a bottle or cup) and glue one end into the notches on one side. Let the glue set completely (leave it over night).

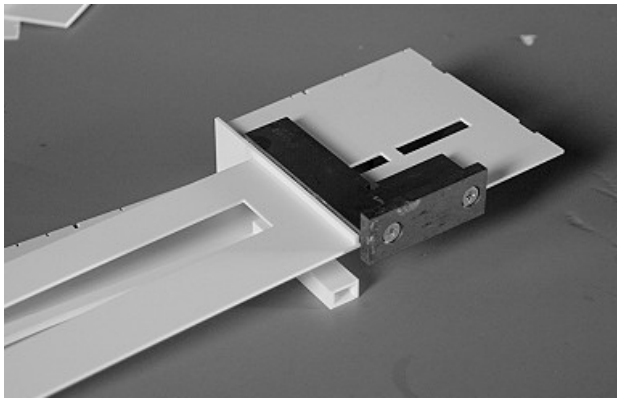
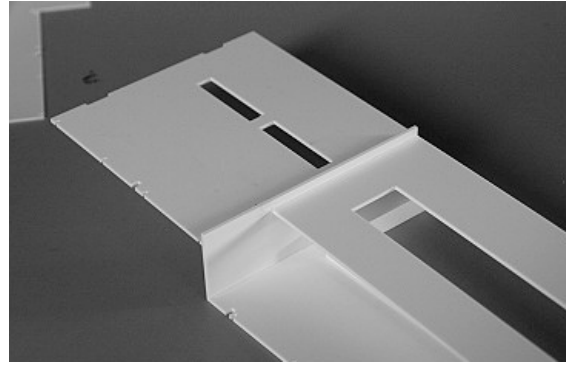
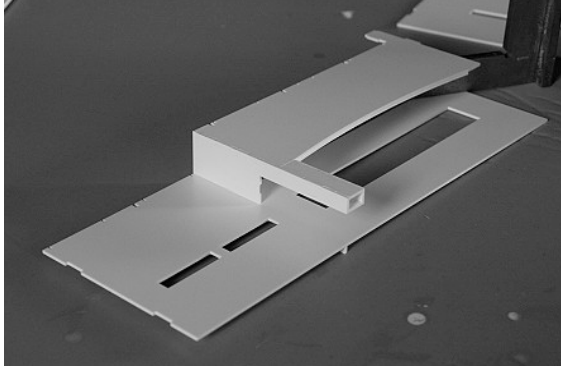


With the glue set in one end, bend the front trim along the lip in the ceiling and fit the end tabs in the notches in the wall. Hold it in place with a couple of clamps until the glue sets completely.

Glue the end pieces with the columns to the front facades, fitting the tab & slot and the column front. Glue the arced strips to the inside of the front facades.

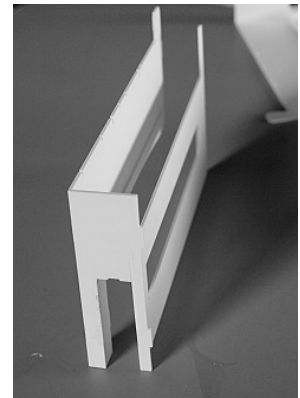


Slide the front wall into the long notch on the column assembly as shown in the pictures below.

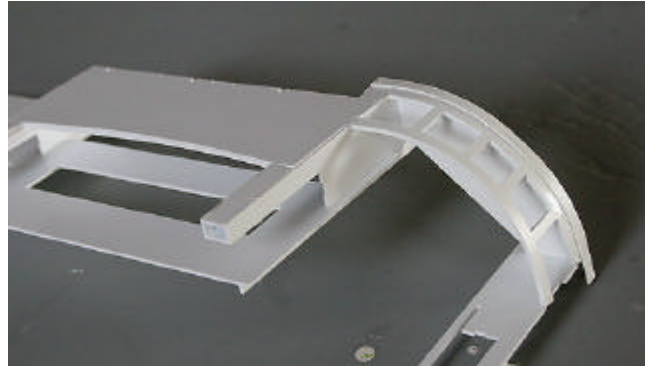
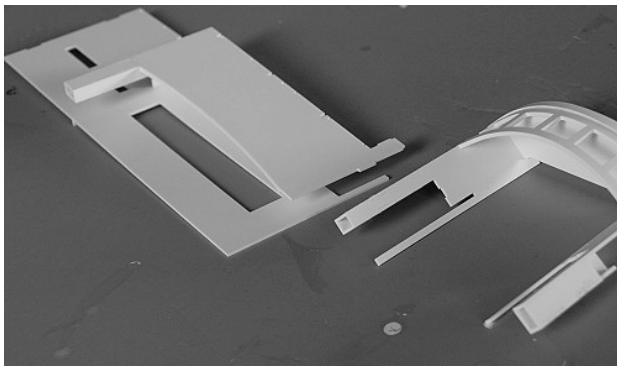


Check with a square to make sure you have a right angle.

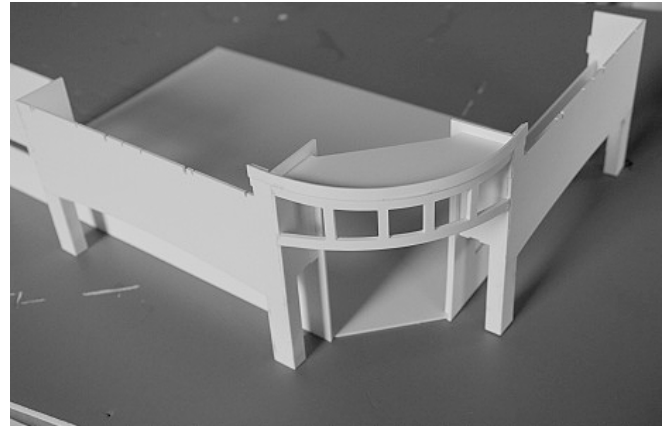
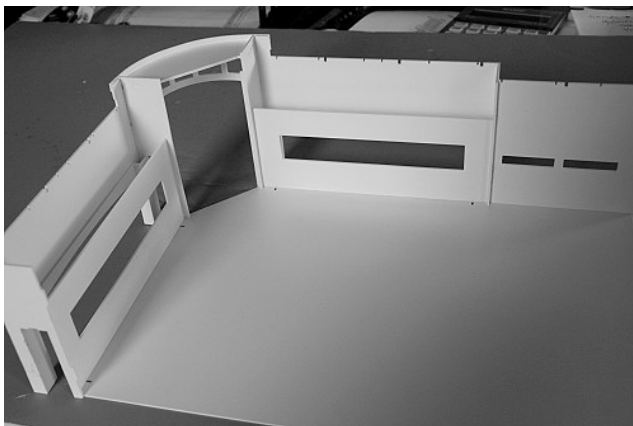
Slide the side wall into the long notch on the other column assembly to the right, aligning the tab and slot in the joint.



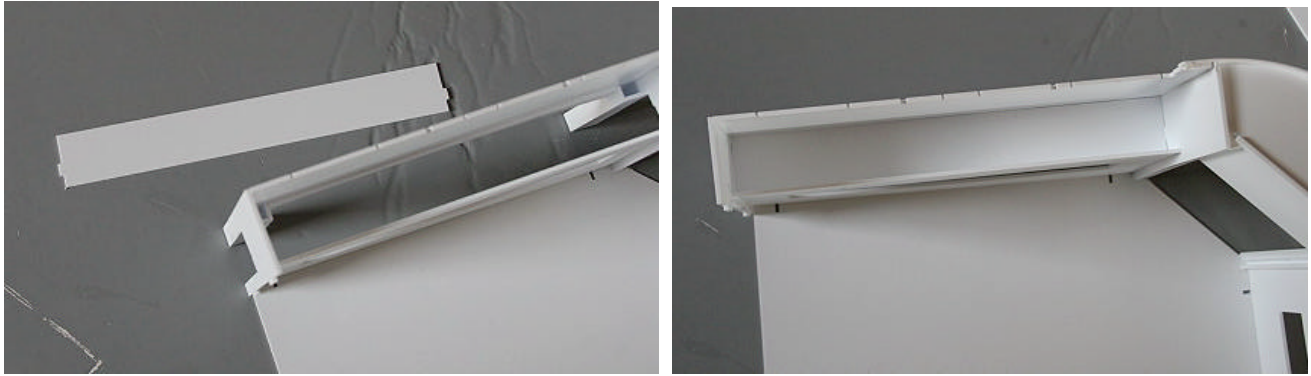
Glue the front wall assembly to the entrance corner assembly.



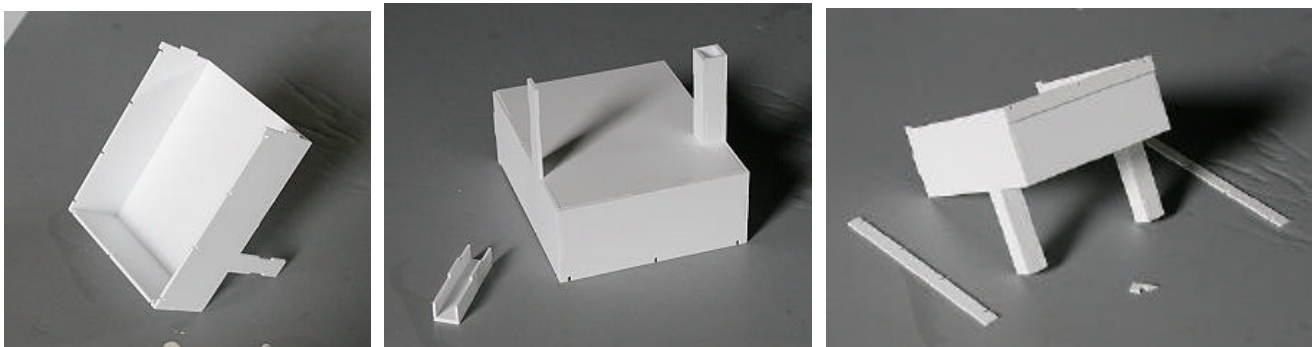
Glue the front wall & entrance corner and the sidewall to the outer edges of the base.



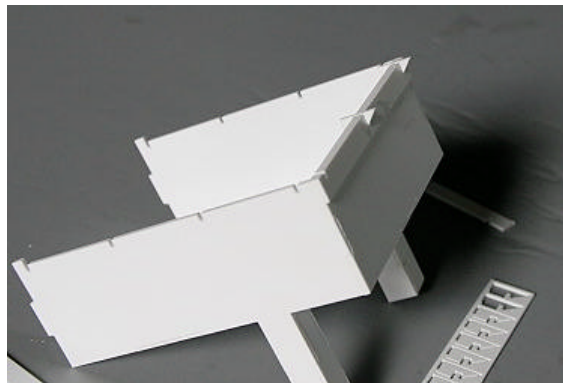
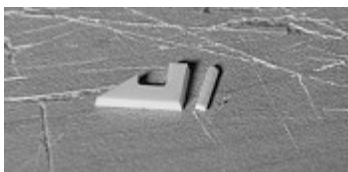
Glue on the ceiling over the covered walkways, fitting the tabs and slots in the ends.



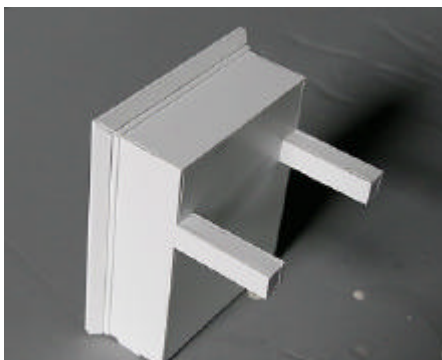
Assemble the walls and the columns for the drive-thru canopy as shown. Then glue on the notched strips on the top edge, aligning the notches.



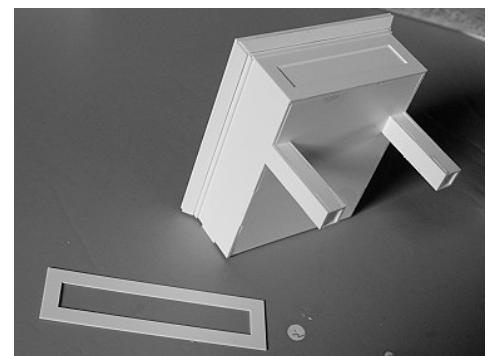
From the short strip with trim supports, break off 2 pcs. and cut off 0.06" (1,5mm) as shown below. These go in the front corners

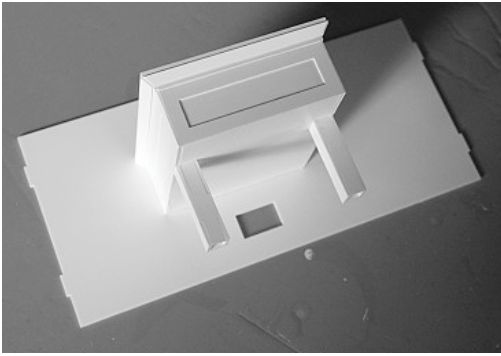


Glue on the remaining trim supports and put the roof on. Then add the trim strips in the 45° angle.

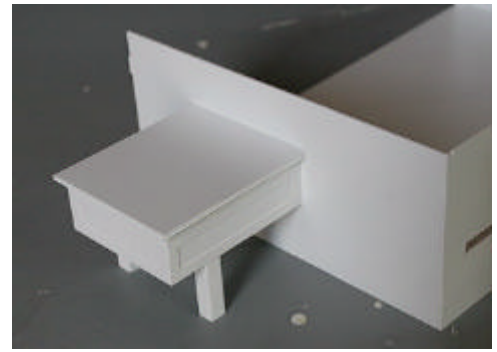


Remove the "fillings" from the wall trim pieces and glue them on, then mount the finished canopy to the short rear wall.





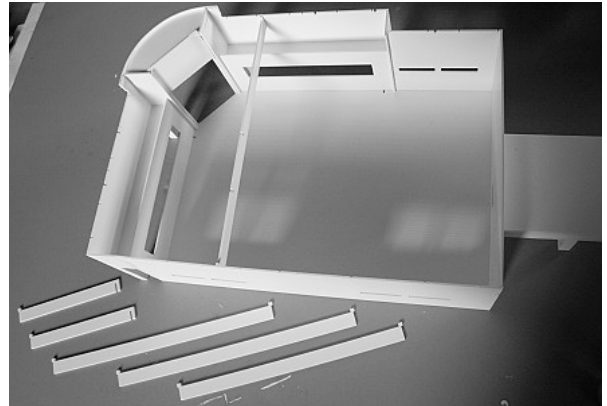
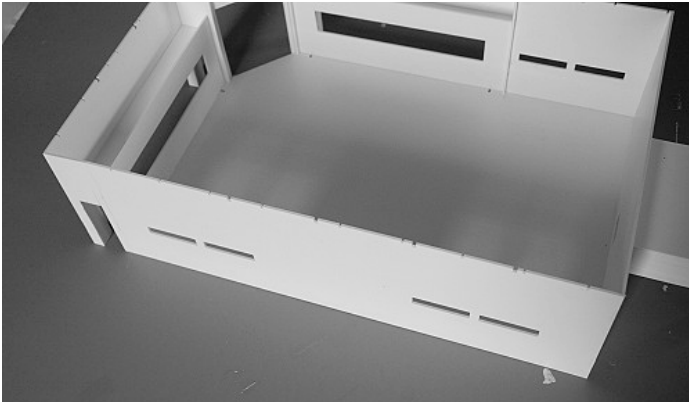
Glue the wall assembly to the edge of the base and the front wall.



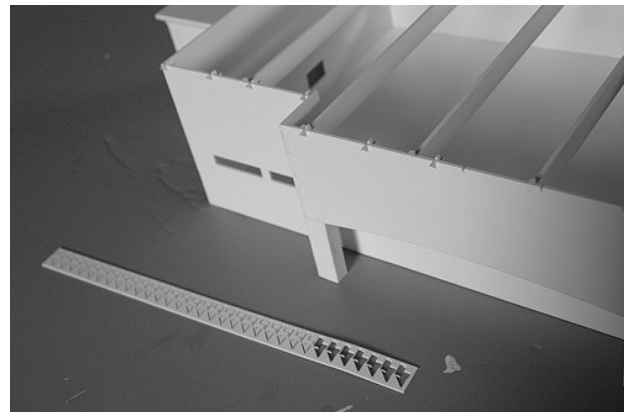
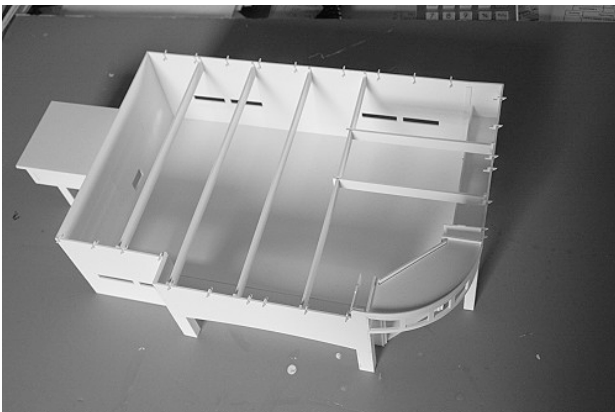
Glue on the rear wall. Check with the notches on the roof to make sure you have the right orientation.

Mount the sub-wall (0.06"/1,5mm thick) across the entrance by sliding it down from the top. Glue to the base and sides, leaving a slot in the top to slide in the thin (0.02"/0,5mm) outer wall across the entrance corner.

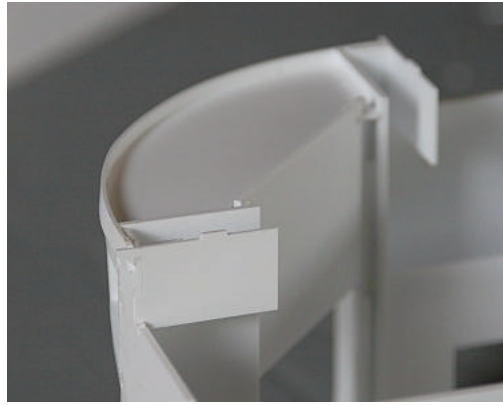
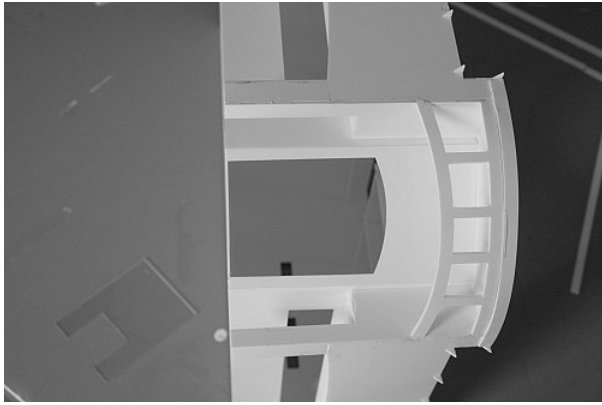
Find the roof support beam with the 3 notches and glue it on as shown in the picture below. The notches must align with the notches on top of the sidewall.



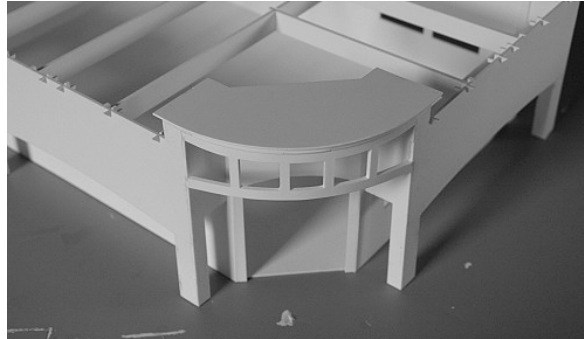
Glue on the remaining roof support beams as shown below. Break out the trim supports from the long strip and glue them into all the small notches around the top.



Slide in the thin (0.02"/0,5mm) wall across the entrance corner. And glue to the sides, sub-wall, top and base. Glue the 2 small end-wall pieces to the top of the entrance assembly as shown on the next page.

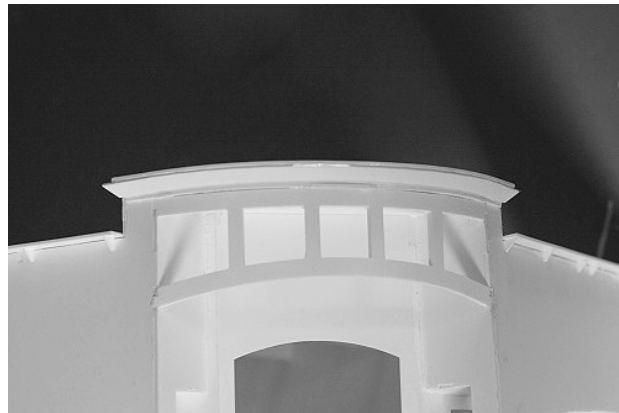
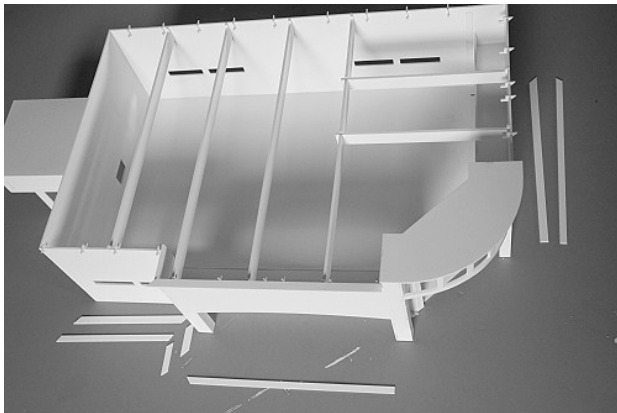


Glue on the corner roof piece, fitting the tabs on the top wall pieces into the slots in the roof.

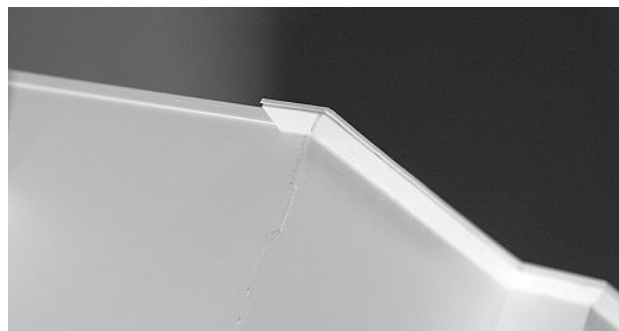
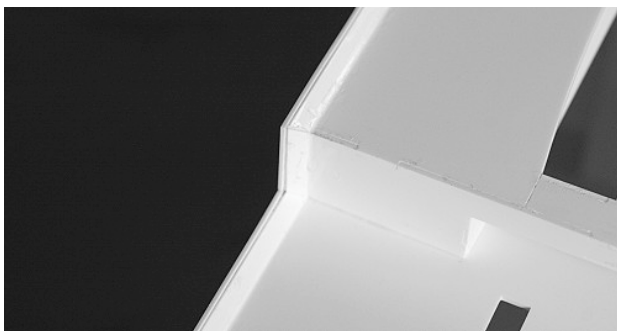


Identify the wider trim strips and glue them to the top of the walls, aligning with the inside edge and the notches in the trim supports. The glue on the narrower trim strips on the 45° angle. Be very careful to align the corners smoothly.

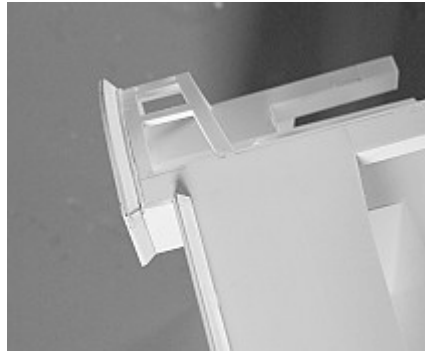
Glue the rounded trim strip around the entrance corner in a 45° angle, taking care that the ends align with the corners.



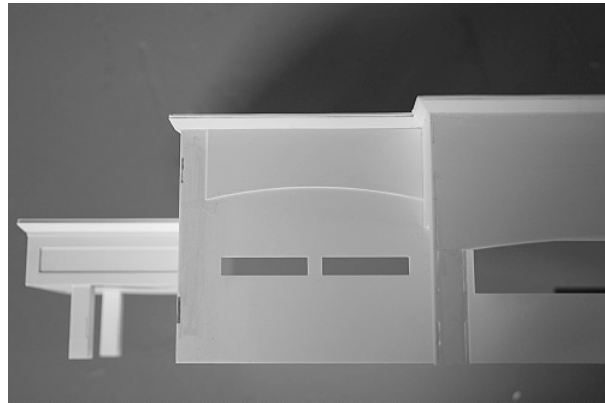
The 2 shortest trim pieces go on the drive-thru wall corners. Mount the narrow long strip between the se trim corners.



Glue on the trim strips on top of the short walls over the entrance.

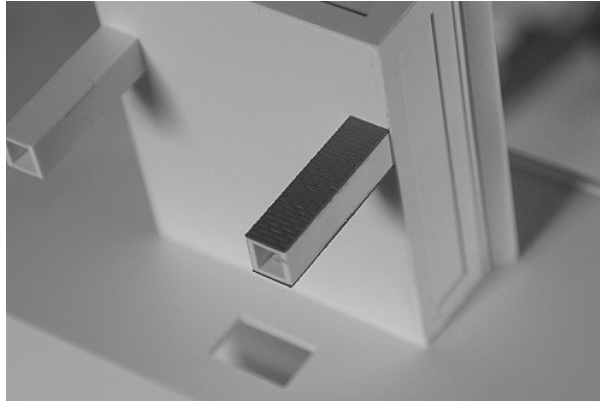
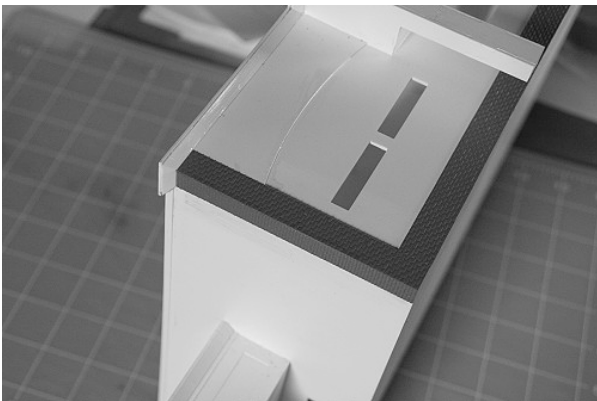


Glue on the flat piece of wall trim above the 2 windows in the front wall, aligning with the top trim.

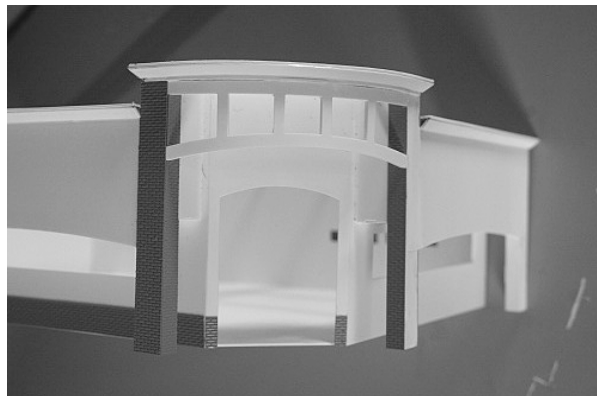


Now it is time to mount the brick strips on the columns and corners. Take some time to identify all the strips as to where they go. Some look alike but may vary 0.02" in width. The strips for the column sides are the same width as the column and the strips for the column fronts are 0.04" wider to cover the thickness of the side strips.

Start by mounting the corner strips, the rear wall strips flush with the corners and the front wall strips covering the joint. Out of one of the 4 long strips, cut 2 pieces 0.2"/5,25mm long and mount them on each side of the entrance. Cut the long strips to the correct length and mount them on the walls.



Mount the strips onto the columns



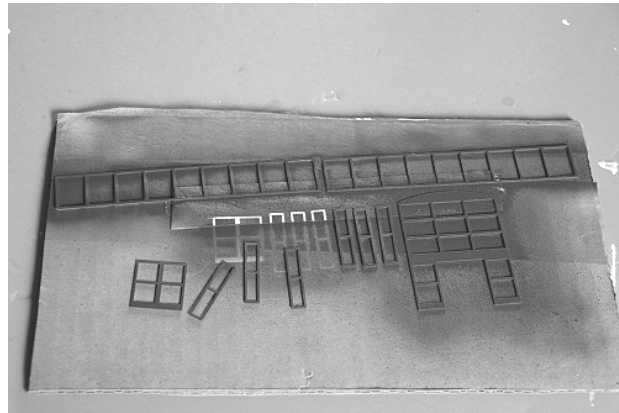
Mount the small signs "Photo Center" and "Drive Thru" on the walls as shown on the pictures below.



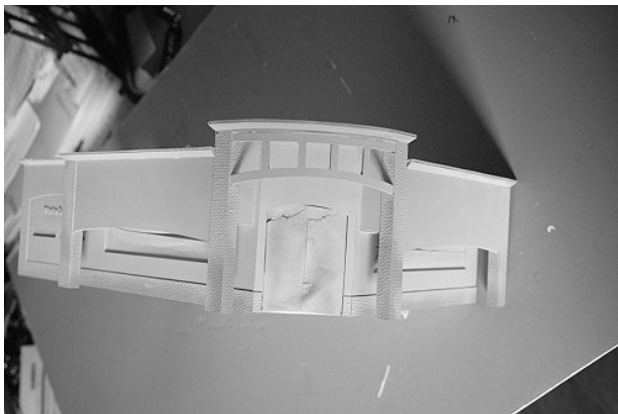
Painting and final assembly

Mount the "CVS Pharmacy" signs upside down on a piece of cardboard with double-sided tape. Remove the "fillings" from the window frames and clean them for any burrs. Put the window frames on another piece of cardboard.

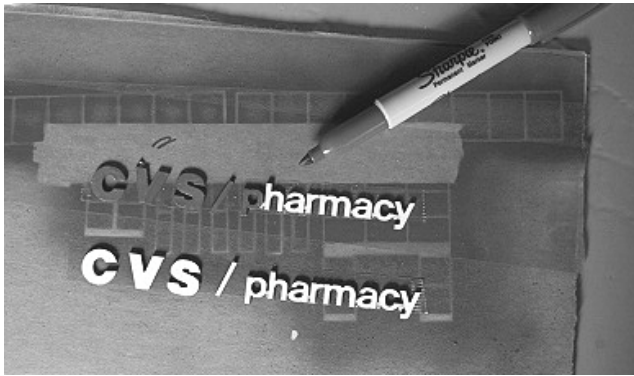
For best results, give the building, the window frames and the signs a coat of primer. Airbrushing gives the best result, but if you do not have an airbrush, you can brush paint, too. The primer is available in a 3 oz. spray can. Paint the backside of the signs black or dark gray (Grimy Black) and the window frames red (Soo Line Red). Except the Drive-Thru window frame, which should be painted aluminum or silver.



Cover the inside of the window and door openings with masking tape and paint the whole building Antique White



When the paint is dry, turn the signs facing up and mount them on a new piece of double-sided tape.



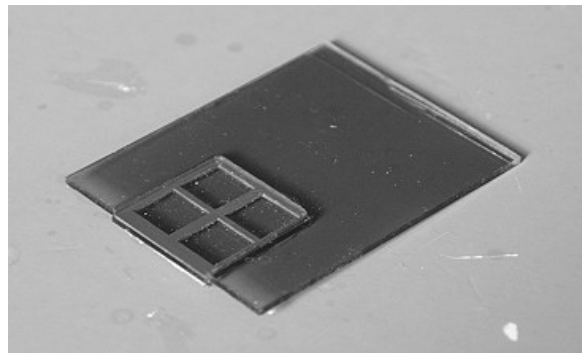
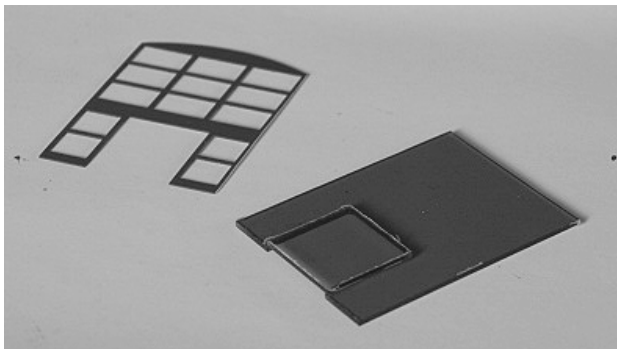
Paint the strips connecting the letters in the wall color with a tiny brush.
Color the face of the signs with a red Sharpie marker or brush paint it with red paint.



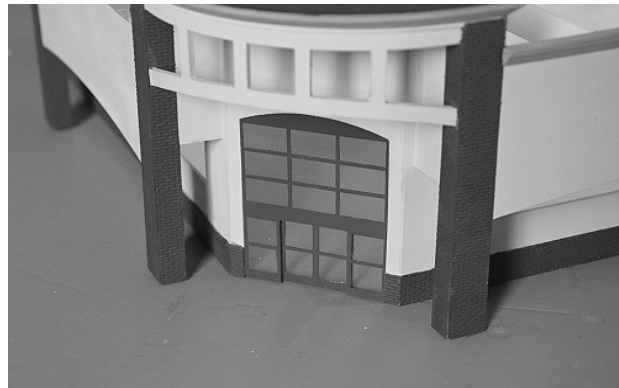
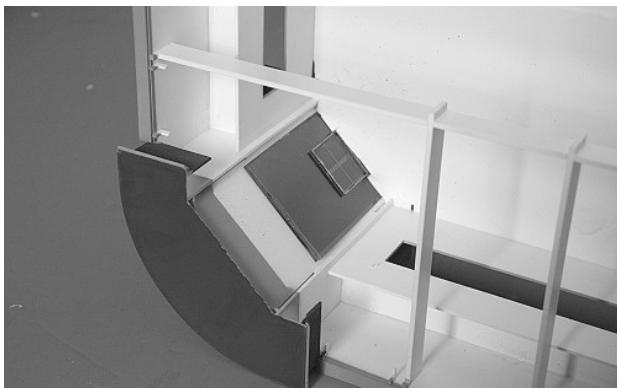
Temporarily mount the roof on the building.
Mask everything but the top trim and paint it light brown (Earth).

Mask along the brick strips and brush paint the red-brown (ATSF Mineral Brown). Remove the roof and paint it dark gray (Grimy Black). Brush paint the roofs of the entrance and the canopy over the drive-thru.

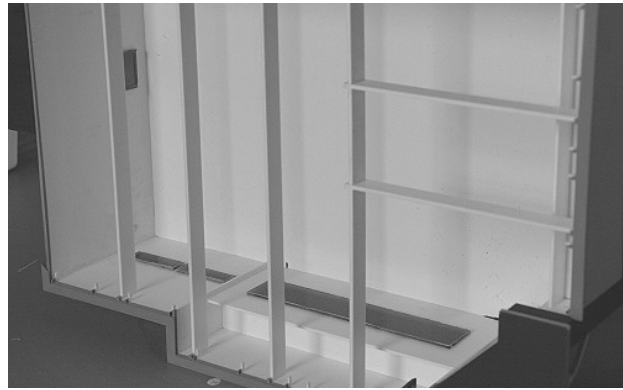
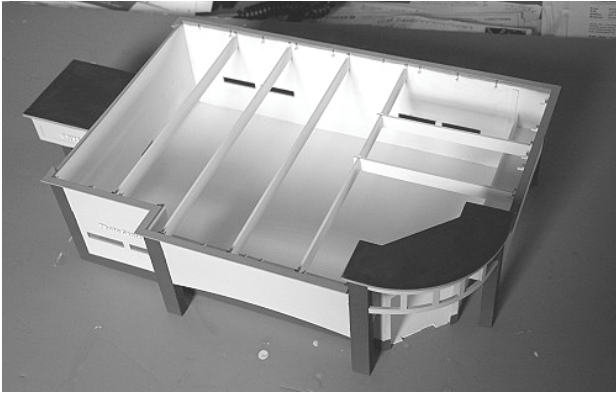
Glue the door glass onto the backside of the entrance glass. Then mount the door on the glass. When the glue has set, paint the edges of the glass red.



Mount the entrance glass in the opening, gluing to the sides and bottom. Test fit the window frames in place before you put any glue on. If it bends out, lightly sand both edges until it fits perfectly. Then apply a small amount of glue to the top middle and bottom, taking care not to get glue on the window surfaces.

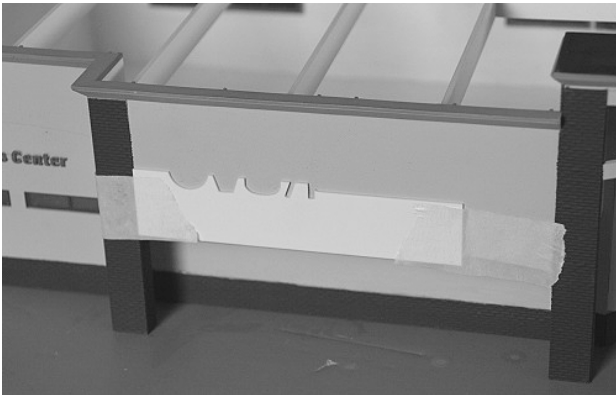


Mount the remaining window glass to the inside of the walls. The windows on this demonstration model have been tinted dark with Auto Window Film (not included). You can buy this in any auto parts store.

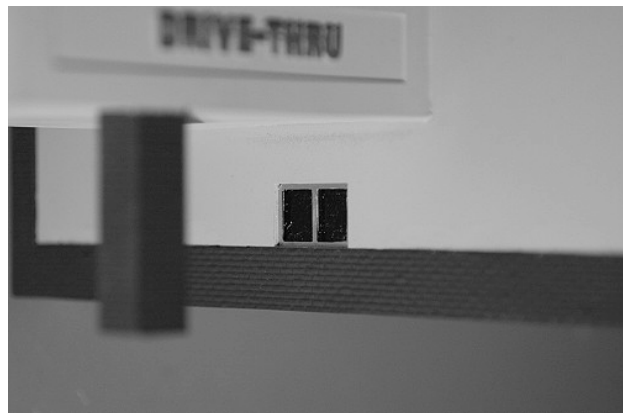


Insert the window frames in the window openings, this should be a perfect press fit with no need to glue. If the frames bend out, sand the edges very lightly until they fit. The parts are cut to such a perfect fit, that the thickness of the paint can make you need to sand the frames lightly.

Attach the sign template to the wall with masking tape, aligning the lower left corner with the bottom of the wall. Apply a small amount of white glue or Scenic Accents Glue to the backside of the letters and stick them to the wall. Leave the template in place until the glue has set, then remove and repeat steps on the other wall.



Carefully sand the paint off the face of the signs "Photo Center" and "Drive Thru" and color them with a red Sharpie marker or brush paint them.



Carefully mount the roof, fitting all the small trim supports in the slots. You should not need to glue the roof on, this will allow you to make interior details later.

Paints used on this model:

110179 ATSF Mineral Brown

110008 Earth

110085 Antique White

110013 Grimy Black

110450 Soo Line Red

Silver or aluminum

You can buy a street sign kit separately, #CVS-SK1

The kit contains parts for one tall sign and two sets of low driveway signs with self-adhesive decals.



Enjoy the CVS Pharmacy on your layout.

If you want to detail the roof with vents and airconditioners, we recommend Walthers #933-3733 Roof Details Kit.

Here are some other products you may enjoy in future projects:



#SMFS Summit Motel, full version



#DP-001 Domino's Pizza take-out



#CS-001 Dave's Coffee Shop



#TB-001 Taco Bell Restaurant



#ML-001 Strip Mall backdrop building #1



#ML-002 Strip Mall backdrop building #2



#ML-003 Office Depot backdrop building



#ML-004 Mall street sign



#GS-001 Modern Gas Station backdrop building

Keep updated for new products on our website: www.summit-customcuts.com