

# KFC Restaurant kit in HO scale



Parking lot base and cars not included



This kit includes all building parts milled in white styrene plastic and laser cut white acrylic, self-adhesive wood and clear acrylic window glazing, and logo & poster self adhesive decals. All parts fit together but may need light sanding in joints for cosmetic reasons. The model needs painting.

Some model building and painting skills are required.

Manufactured by Custom Cuts by 

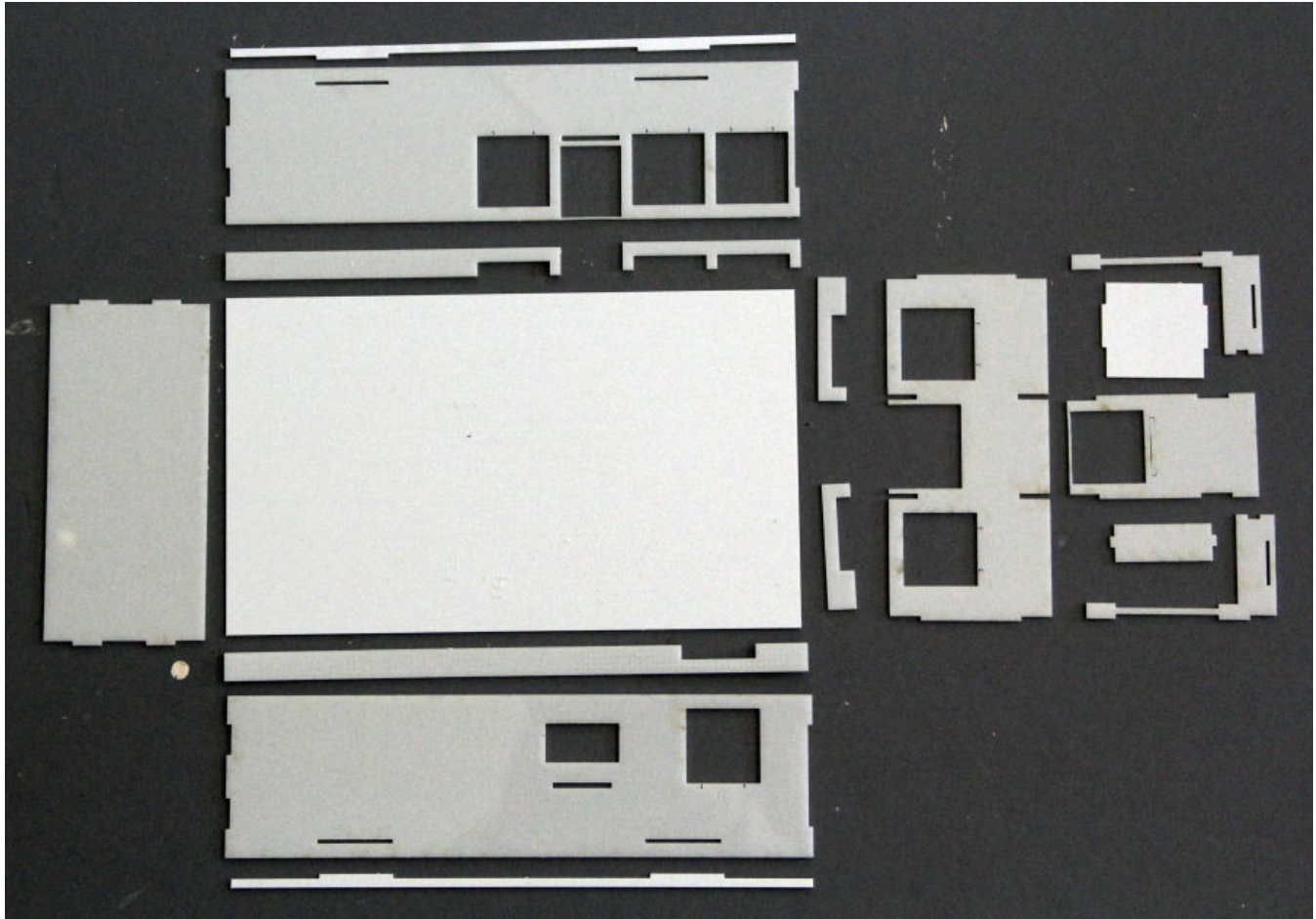
Summit USA LLC, 512A Ford Street, Lake Charles, LA 70601  
[www.summit-customcuts.com](http://www.summit-customcuts.com)

## Assembly instructions for KFC Restaurant

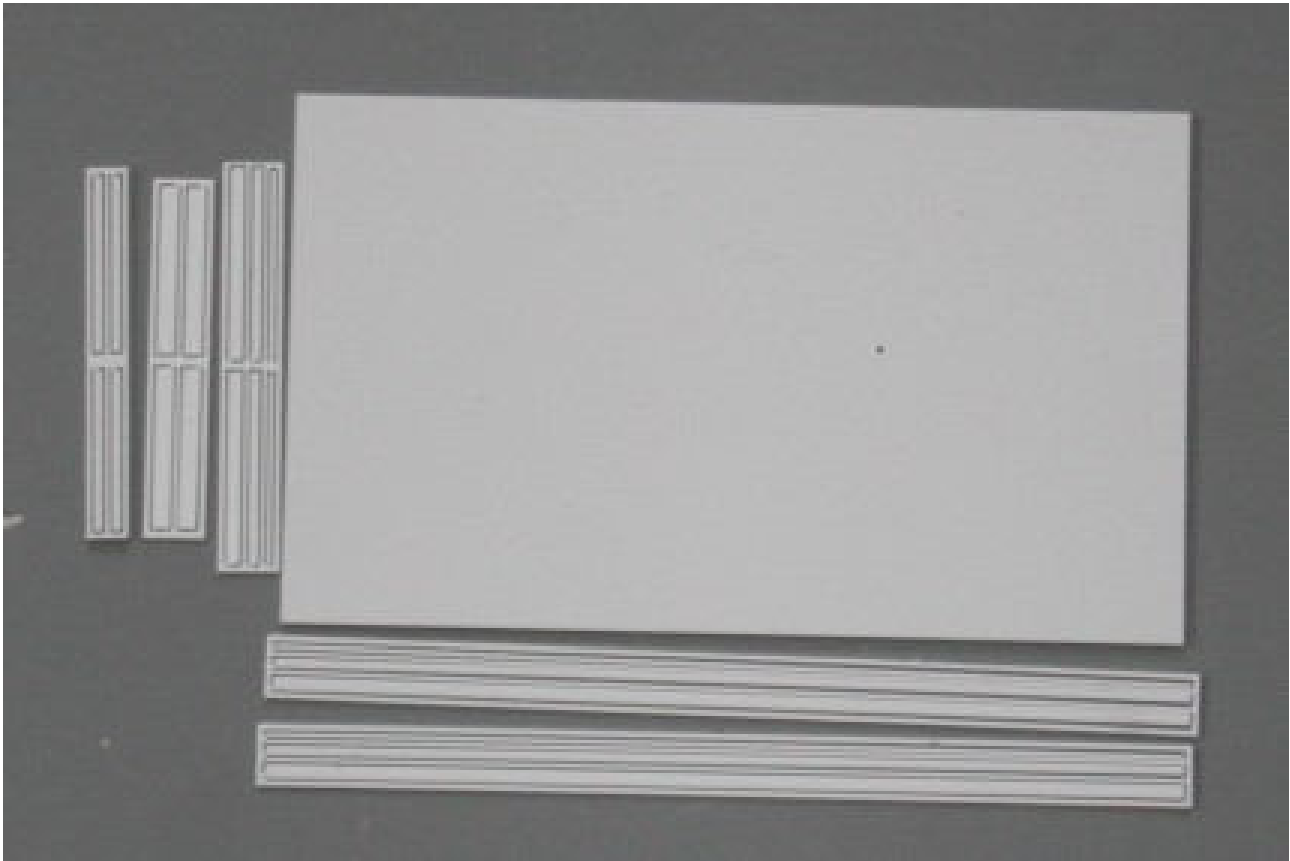
Thank you for buying this KFC Restaurant kit. Please take some time to read these instructions before you begin assembling.

This kit is milled in styrene plastic and laser cut white acrylic and is very easy to glue together using MicroMark Samestuff, Plastruct Plastic Weld or similar glue products. The wall parts are tabbed and slotted for easier assembly.

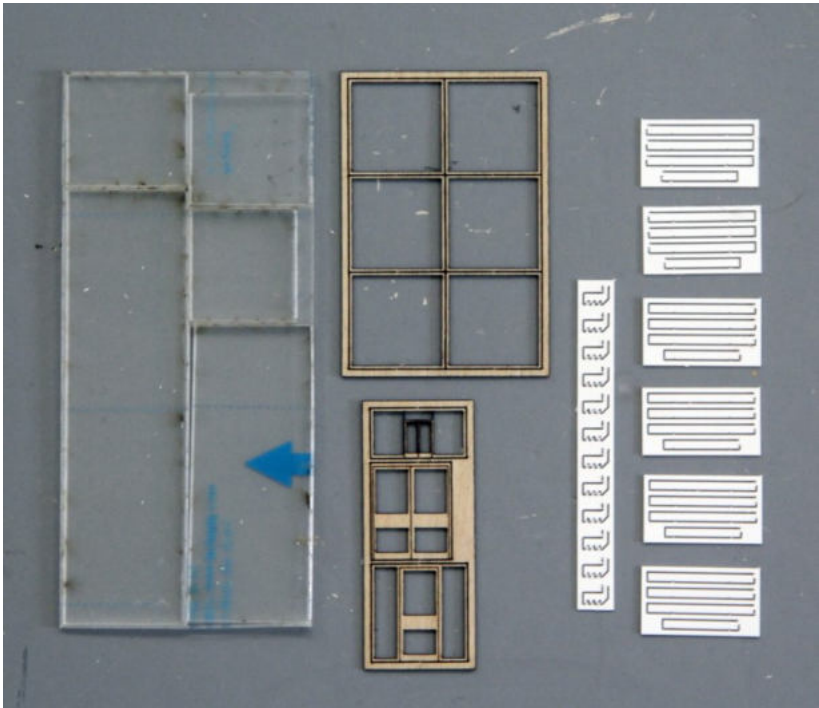
Take your time to identify all parts, lay them out and clean them for any burrs before gluing them together.



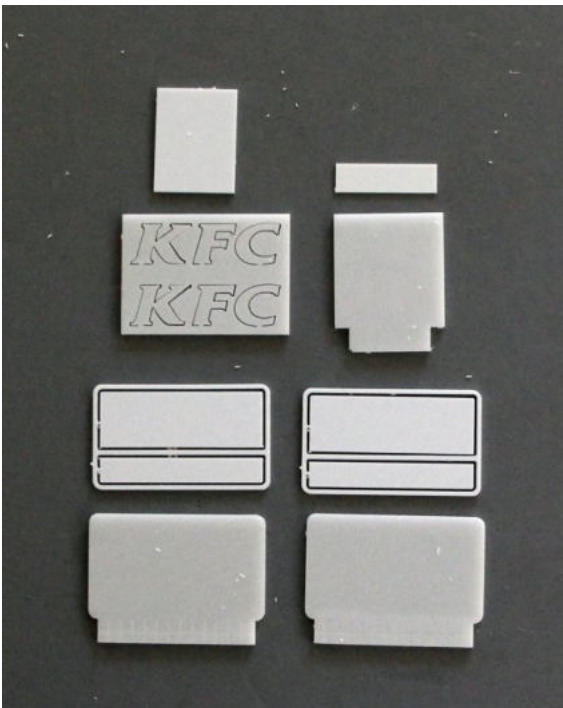
Base and wall parts overview, walls and bottom tile strips are acrylic, all other parts are styrene.



Roof and top wall trim

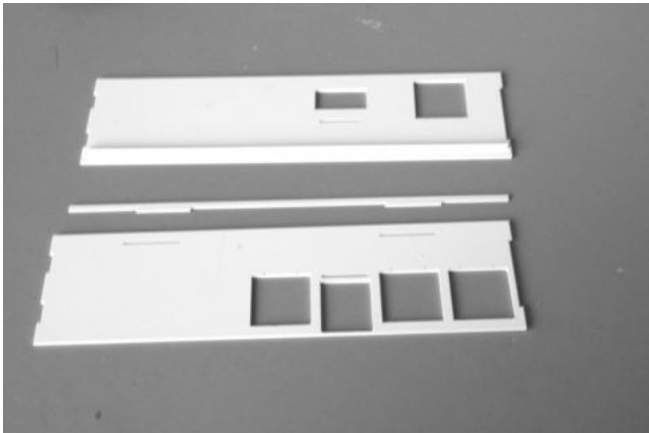


Windows, doors and glazing (covered with protective plastic) and window awnings

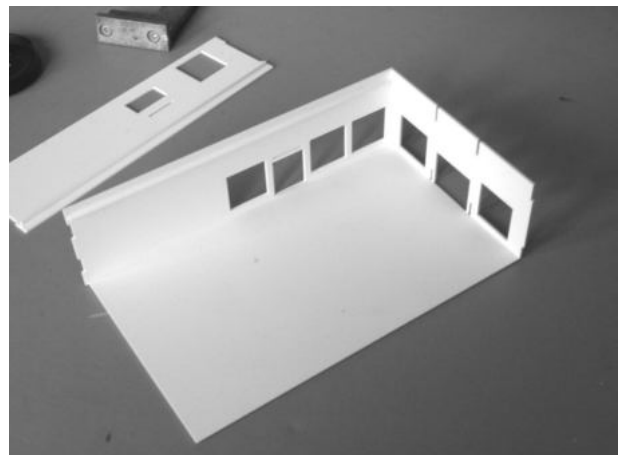
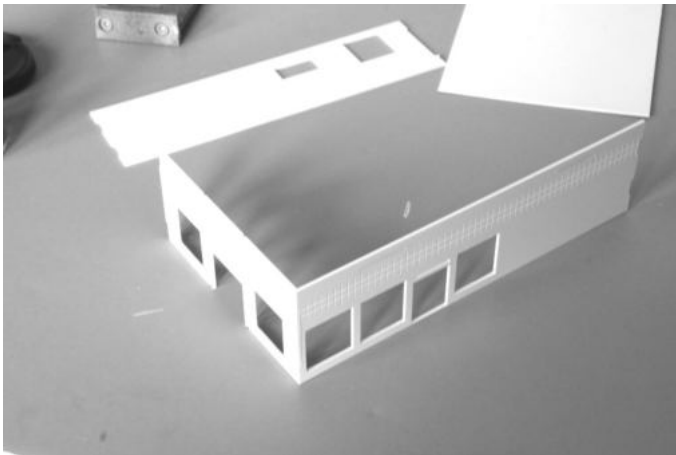


signs & logos

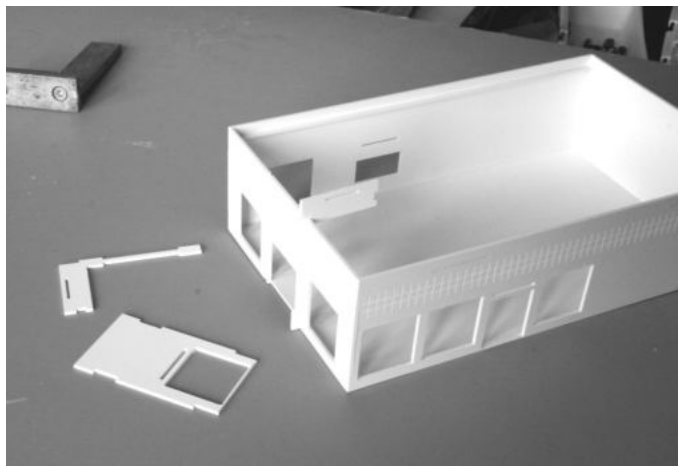
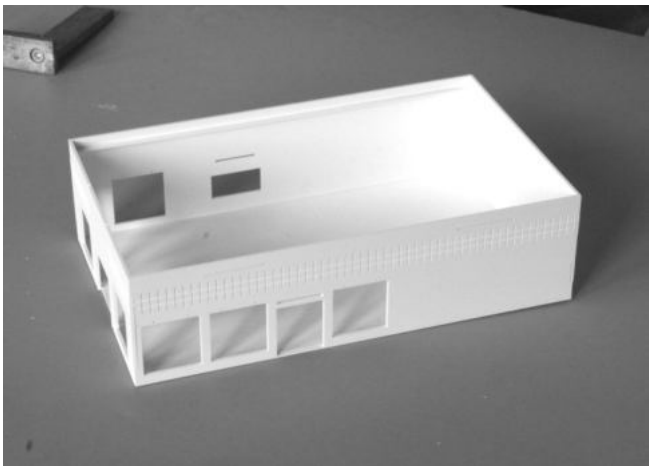
## Assembly



Start by filing the corners of the tabs on the styrene parts with a square or triangular file to insure a good fit. Glue the roof support strips to the inside of the walls.

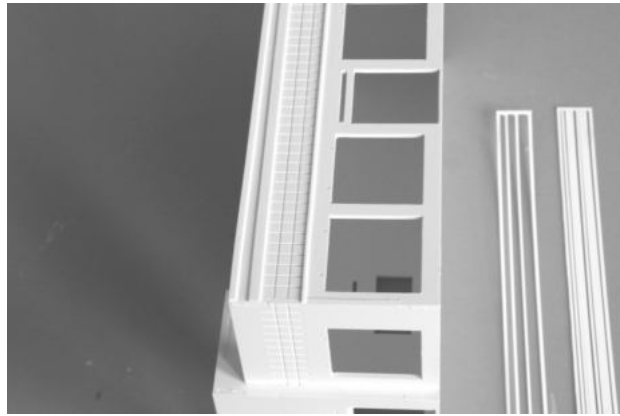
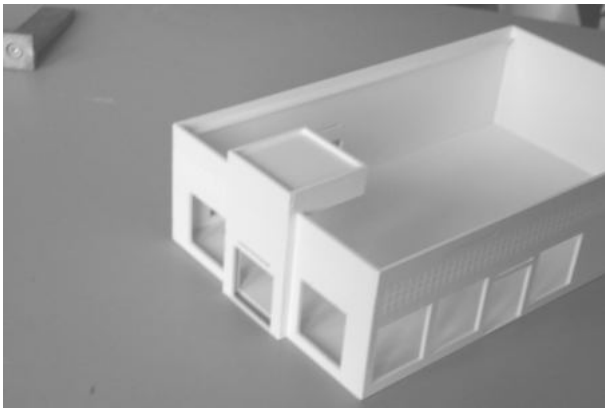


Glue the front and side wall together the glue the walls to the EDGE of the base plate.

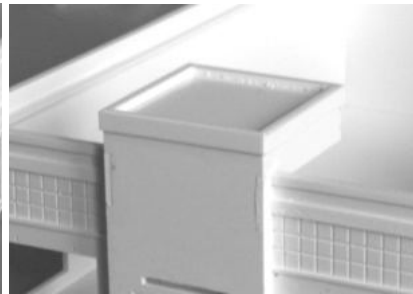
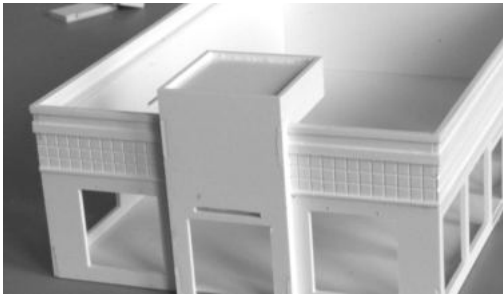


Glue the remaining 2 walls to the base plate and glue on the entrance "tower".

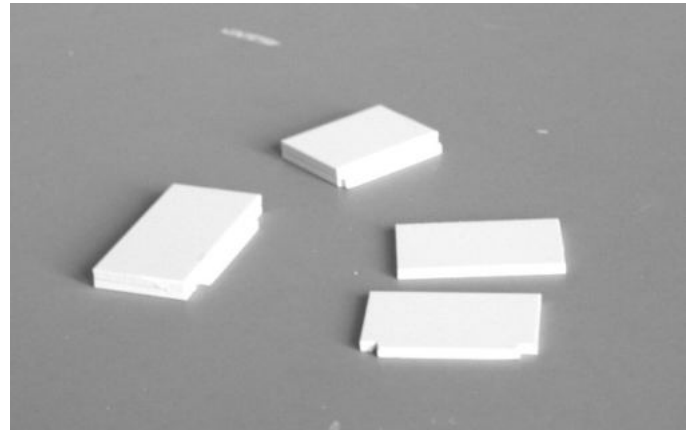
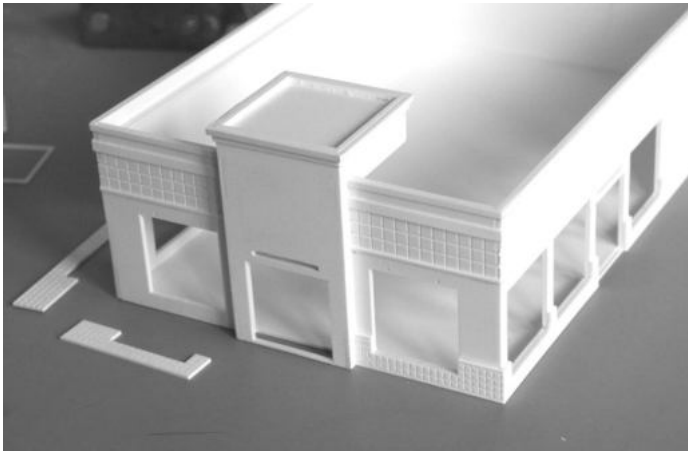




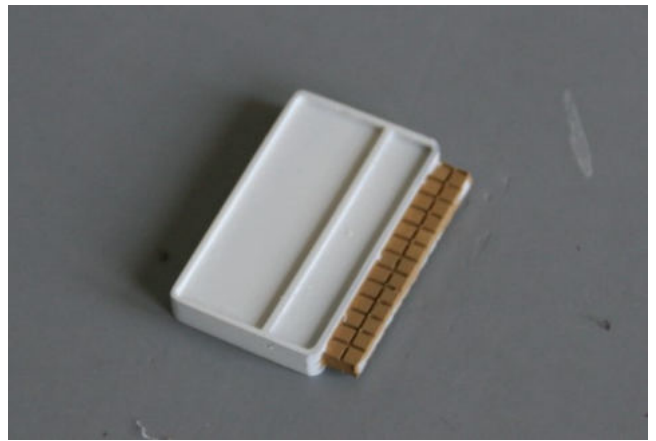
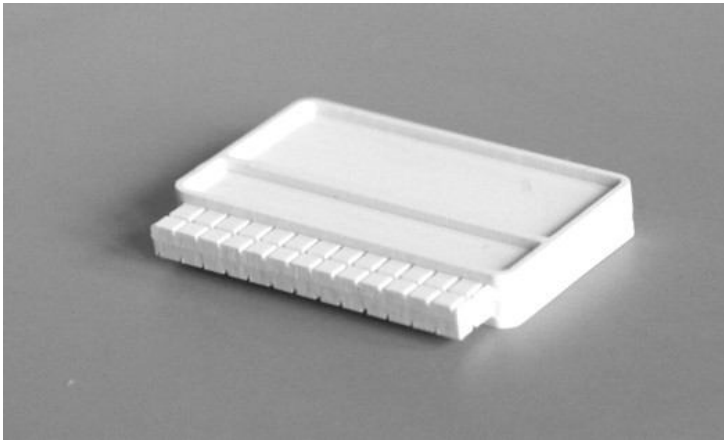
Glue the top wall trim strips to the walls, the top strip is the medium width of the 3. Glue the other 2 trim strips on the wall, aligning with the tiles. The narrowest strips are the lowest. There are no strips for the rear wall.



Glue the top trim on the tower as shown.

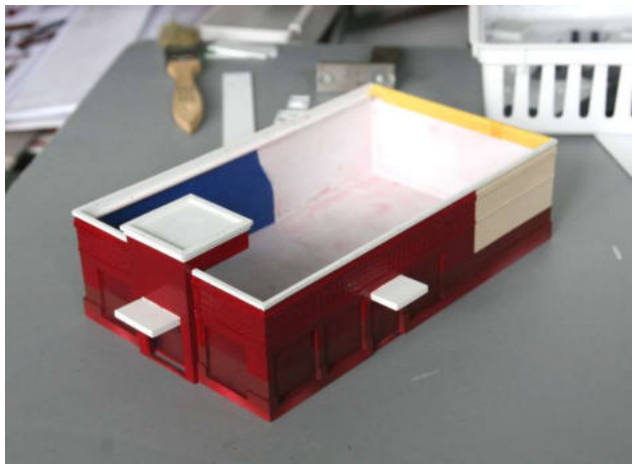
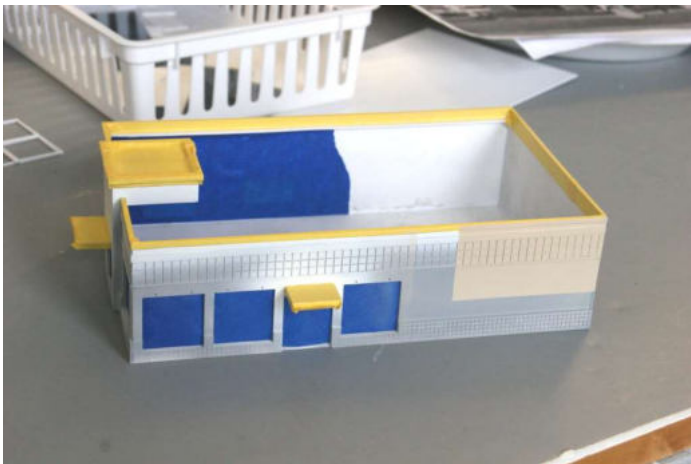


Glue the tile pieces to the bottom of the wall. Glue the door and drive-thru window awnings together (lamine). You can glue them onto the building now or wait until everything is painted.



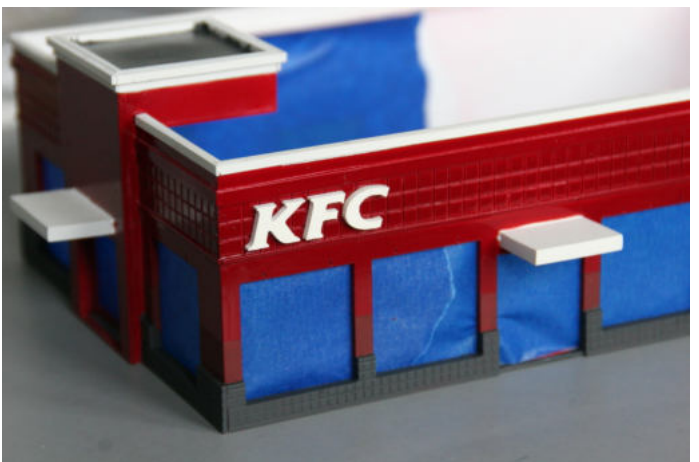
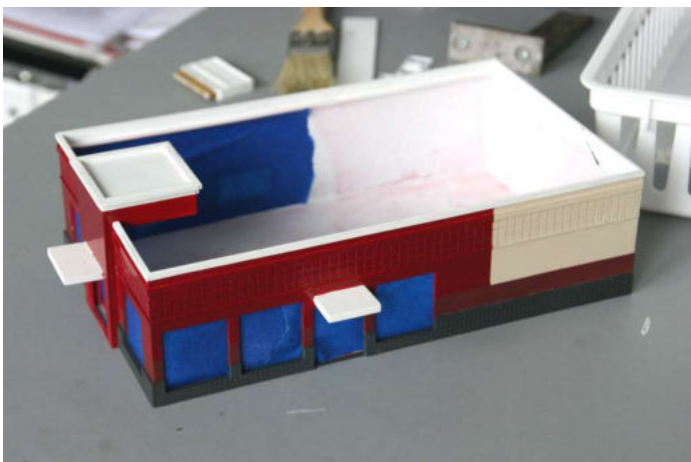
Glue the street sign pieces together as shown. Paint the sign white and the bottom tiles sand.

## Painting



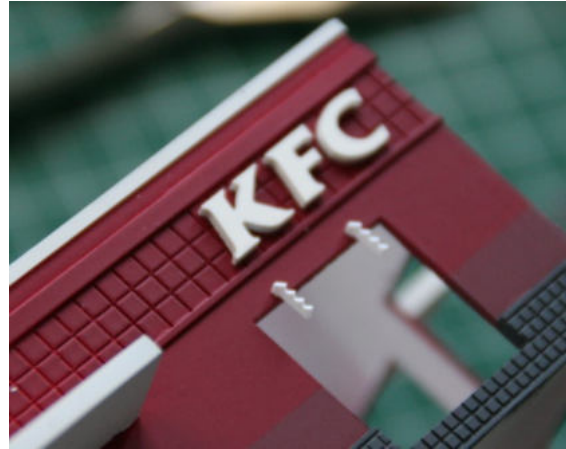
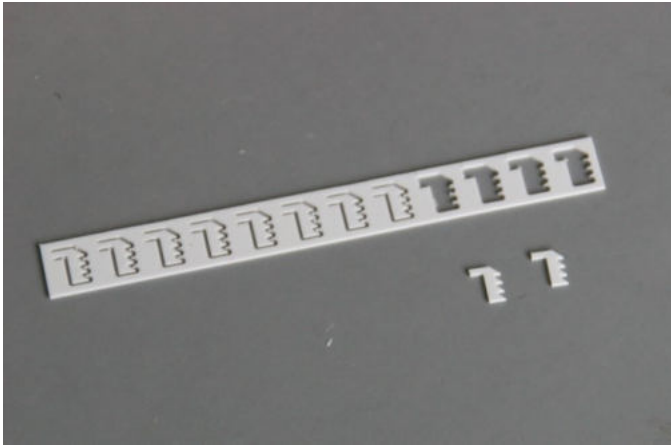
Cover the window openings from the inside with masking tape, then give the whole building a coat of gray primer.

When the primer is dry, paint the top trim strips and door awnings white. Also paint the logo letters, doors and window frames white (leave them on the sprue). Paint the rear wall and the section of side wall shown a sand color (on both sides of the building)



Mask off the white and sand colors and paint the rest of the building dark red. After the red has dried (at least 24 hours if you're using solvent based paint), mask a stripe around the 3 red walls and paint it a dark brownish red. Check the picture on the bag for position and color shade. Finally paint the bottom tiles dark gray. Paint the roof dark gray or Grimy Black.

Glue the logo letters onto the wall on both sides, using white glue or Woodland Scenics Scenic Glue, this dries up clear and flat.



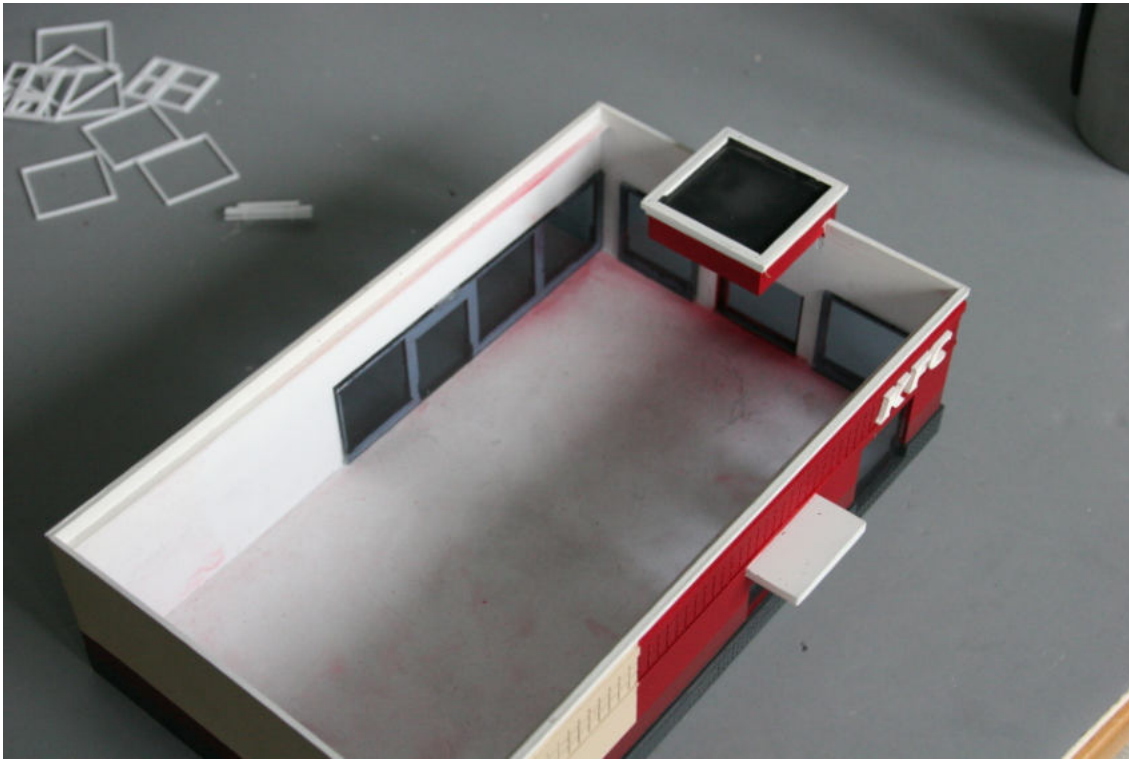
Cut the brackets for the window awning out of the sprue and carefully insert them in the holes above the window, using a pair of pliers. Do not glue at this time.



Glue on the bottom panel to the brackets as shown. There are 2 tiny notches in the panels matching the brackets. Repeat this for the other 2 panels. The shorter top panel must be mounted on top of the bracket and you have to align the small notches to the brackets. When the glue has set you can carefully pull the awning out of the holes and paint it. I strongly recommend to paint these because the bare white styrene will turn yellow over time.

## Installing the windows and doors

Remove the protective paper from the window glazing and install it on the inside of the wall with just a drop of glue along the edges. If you want tinted glass as shown here, put some car window film on the inside of the glazing before mounting them.



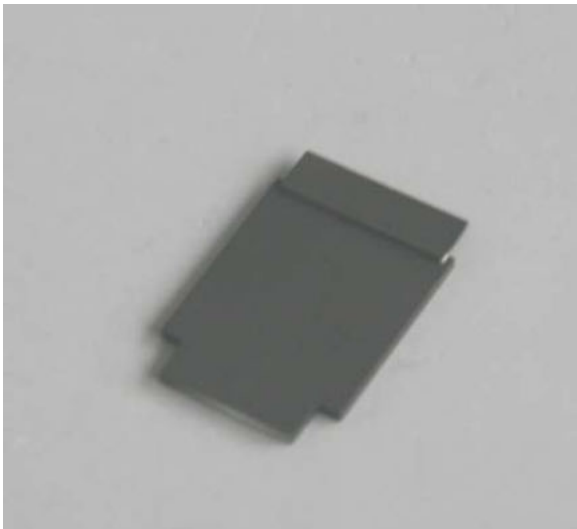
Cut the self-adhesive doors and window frames out of the sprue, remove the backing paper and carefully stick them to the glass. Be VERY CAREFUL to position them correct in the first attempt, once the glue sticks you can't remove the parts without destroying them.

Before you handle the decal sheet you should spray a coat of Krylon Clear Acrylic or Testors Dull Cote on it to protect the print. When the paint is dry, cut out the logos and posters with a sharp hobby knife.



Mount the logo decal on the logo piece and then paint the white edge of the decal and the edges of the sign with a black Sharpie marker. Mount the sign on the wall using the same glue as the on logo letters.





Glue the top panel onto the Drive-thru menu as shown and paint the whole sign black. Mount the menu and top poster as shown.



Mount the painted window awnings and attach the small logo decals to the doors and the posters to the windows.

If you want to detail the roof with vents and air conditioners, we recommend Walthers #933-3733 Roof Details Kit.

Colors used on this model: Testors Sand FS33531, Testors Dark Red 1501E, Testors Dark Gray 2094, Floquil Reefer White F110011, and Floquil ATSF Mineral Brown F110179. Unfortunately the Floquil paints have been discontinued, so you will have to find another match.



Enjoy your KFC Restaurant on your layout.

Here are some other products you may enjoy in a future project:



#DN-001 Denny's Restaurant



#DP-001 Domino's Pizza take-out



#DP-003 Domino's latest design



#CS-001 Dave's Coffee Shop



#TB-005 1970's Taco Bell



#TB-006 1980's Taco Bell





#TB-001 Taco Bell Restaurant



#TB-003 New Taco Bell Restaurant



#KFC-001 KFC Restaurant



#SW-001 Subway Restaurant



#SW-002 Subway latest design



#WH-001 Waffle House Restaurant



#HD-001 Hardee's Restaurant



#CJ-001 Carl's Jr. Restaurant



#PH-001 Pizza Hut Restaurant



#IH-001 IHOP Restaurant



#EX-001 Exxon Gas Station & Store



#SC-001 Rural Shamrock Gas Station



#SH-001 Shell Gas Station & Store



#DG-001 Dollar General Store



#DG-002 Dollar General, latest design



#LO-001 Lowe's backdrop building



#CVS-001 CVS Pharmacy



#FS-001 Modern City Fire Station





#JL-001 Jiffy Lube



#ML-001 Strip Mall backdrop #1



#ML-002 Strip Mall backdrop #2



Mall complex



#ML-003 Office Depot backdrop



#ML-005 Pier 1 Imports backdrop



#ML-006 Dollar Tree backdrop



#SMFS-001 Summit Motel, full version



#BK-001 First State Bank



#BK-002 Capital One Bank



#DA-001 Discount Auto Parts



#DP-004 MKT Depot



#ST-001 Starbucks Coffee



#WM-001 Walmart backdrop building Keep updated for new products on our website: [www.summit-customcuts.com](http://www.summit-customcuts.com)