

Modern Strip Mall building kit in HO scale



This kit includes all building parts milled in white styrene plastic, laser cut white acrylic and self-adhesive wood, Plastruct random stone and clear acrylic window glazing. All parts fit together but may need light sanding in joints for cosmetic reasons. The model needs painting.

Some model building and painting skills are required.

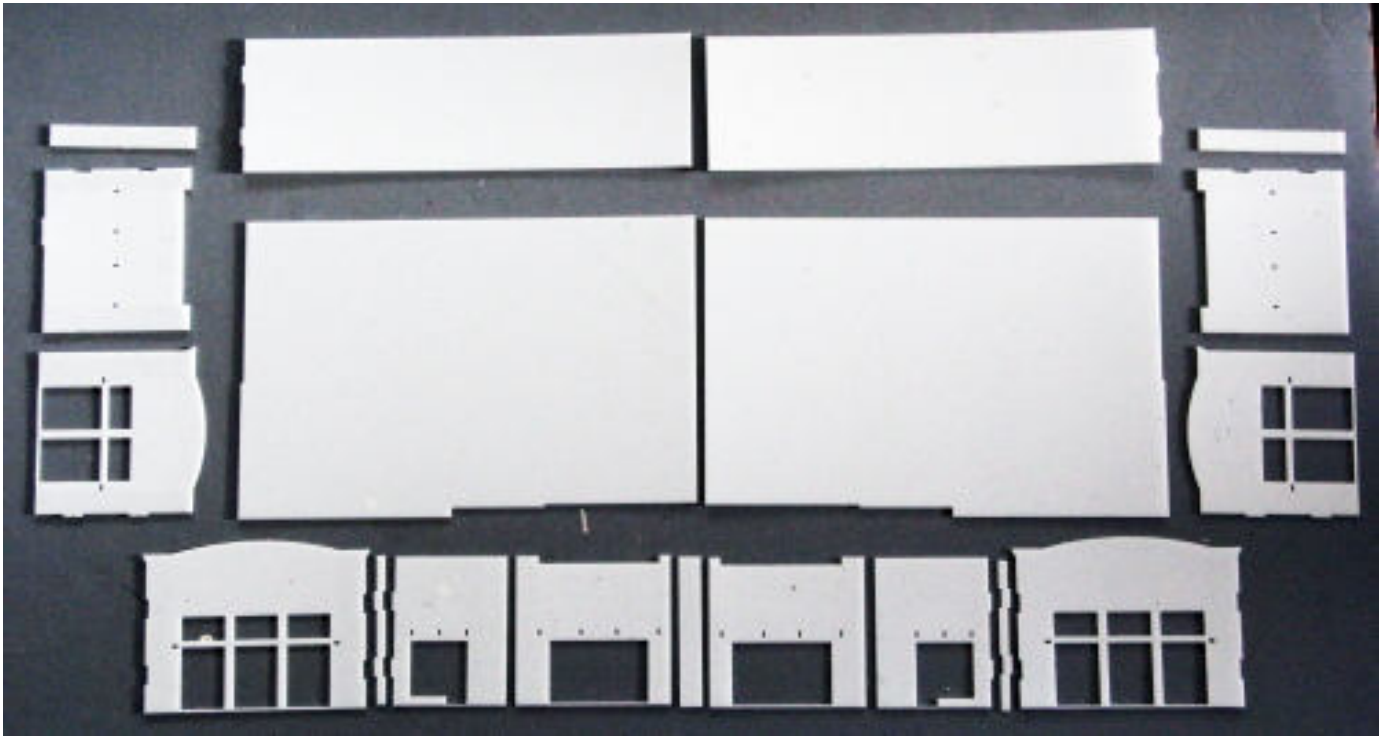
Assembly instructions for Modern Strip Mall Building kit

Thank you for buying this modern Strip Mall Building kit. Please take some time to read these instructions before you begin assembling.

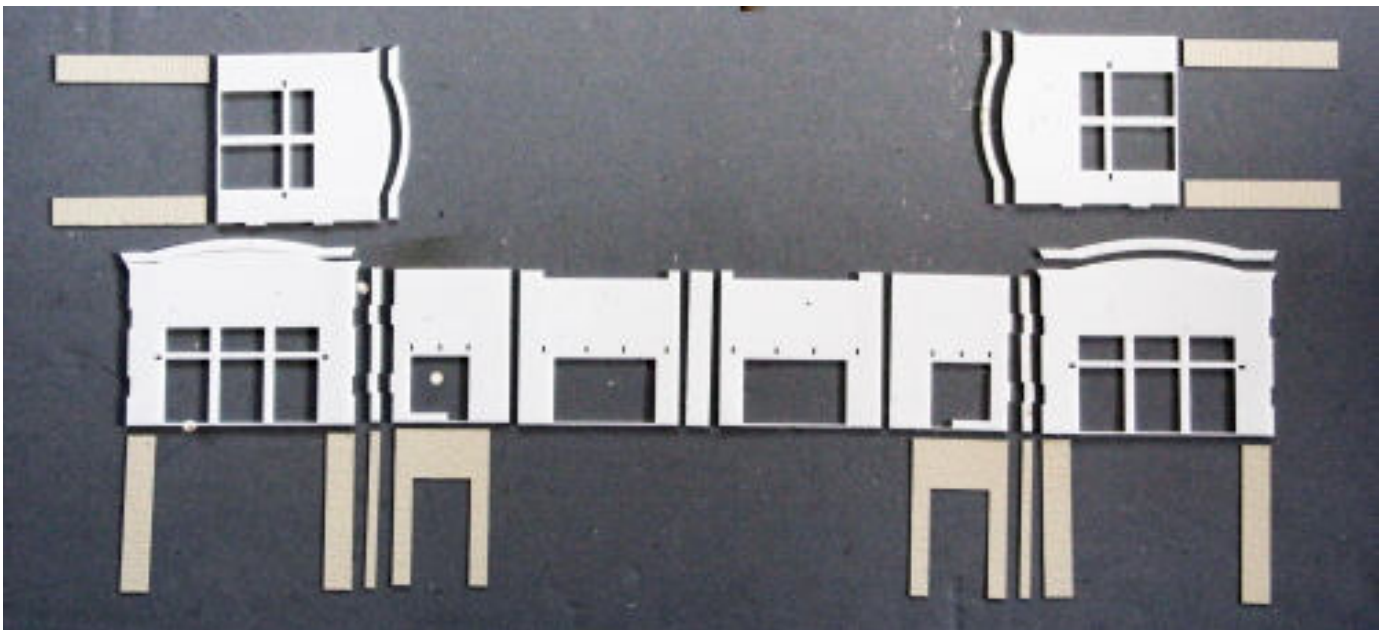
This kit is milled in styrene plastic and laser cut acrylic and is very easy to glue together using MicroMark Samestuff or Plastruct Plastic Weld glue. The wall parts are tabbed and slotted for easier assembly.

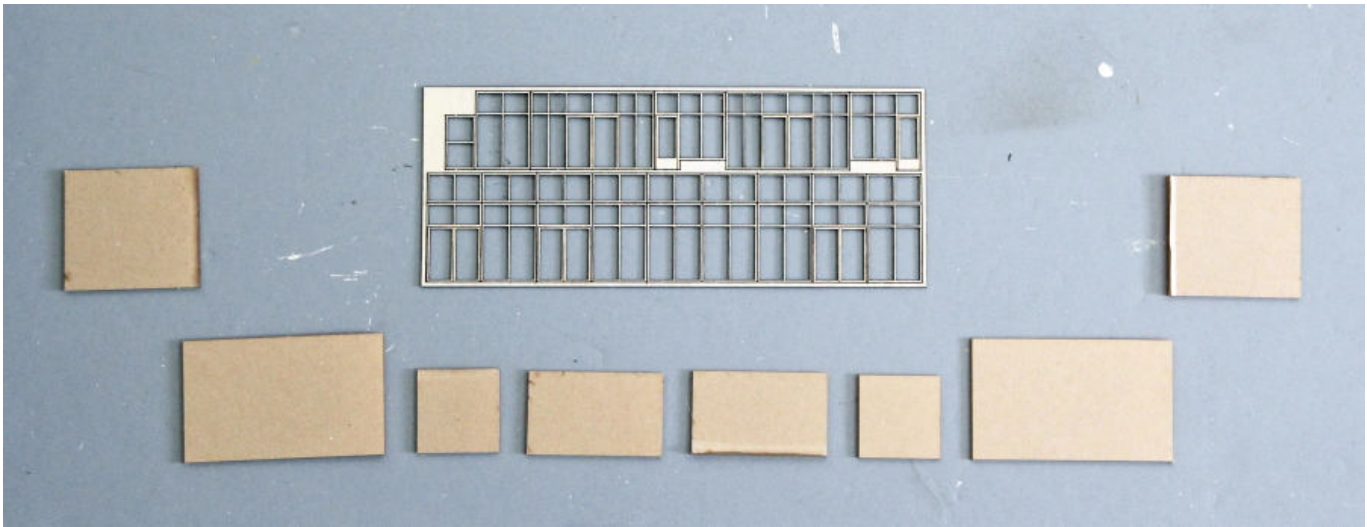
Take your time to identify all parts, lay them out as on the pictures and clean them for any burrs before you start gluing them together.

Handle the acrylic parts with care; they are easier breakable than the styrene parts.

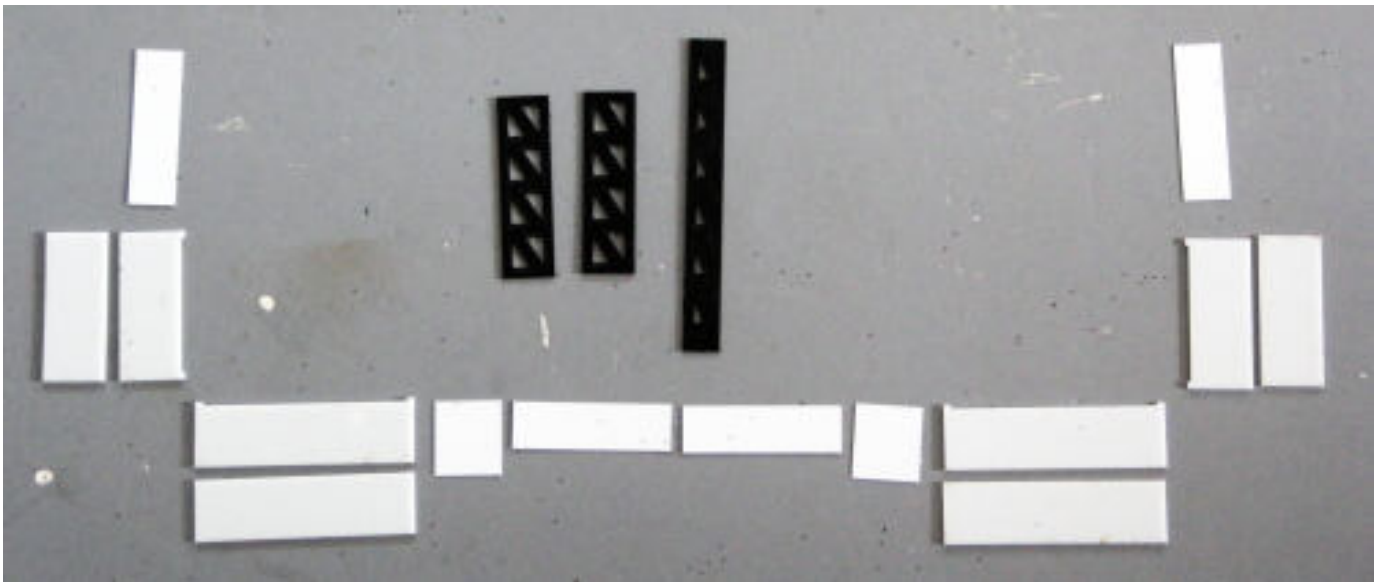


Walls and floor, below the walls are shown with the random stone trim.

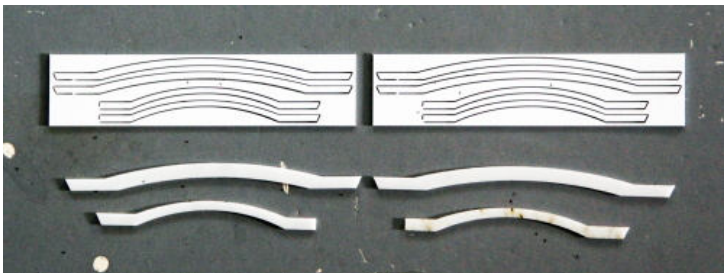




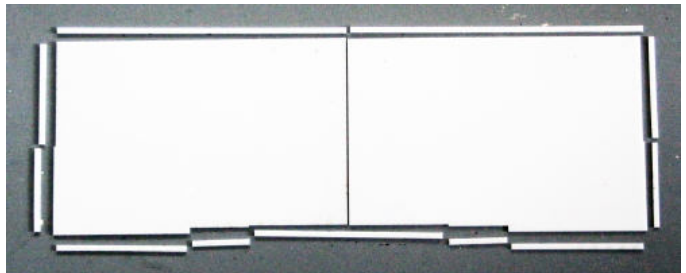
Window sections and glass (the glass has protective paper)



Awnings and brackets



Wall top trim



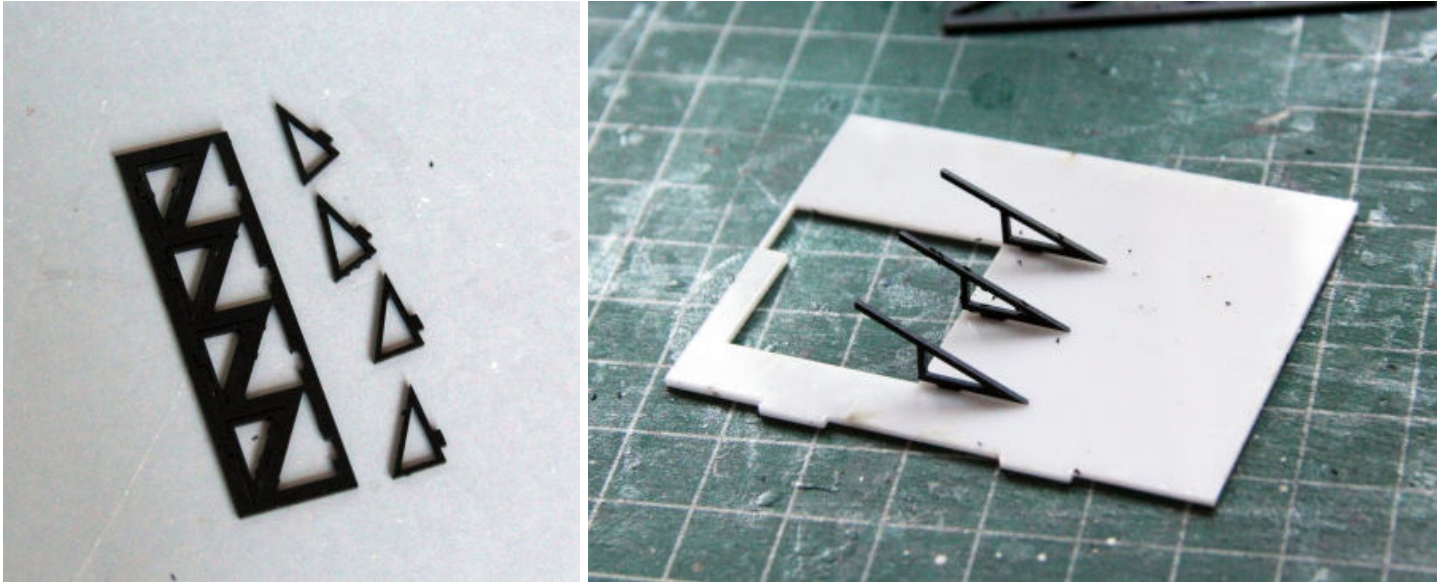
Roof and support strips



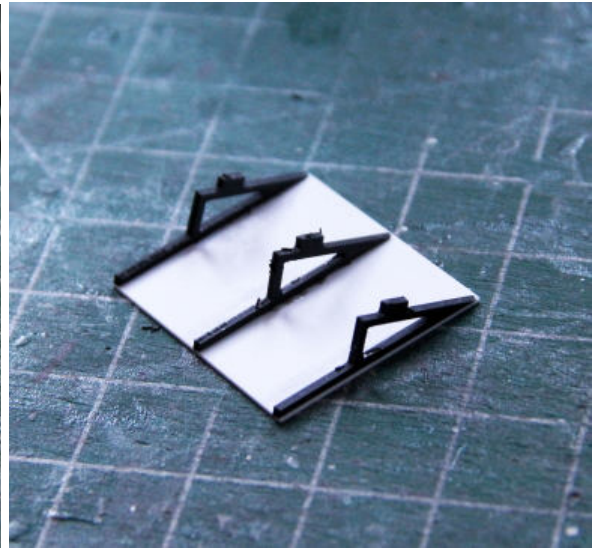
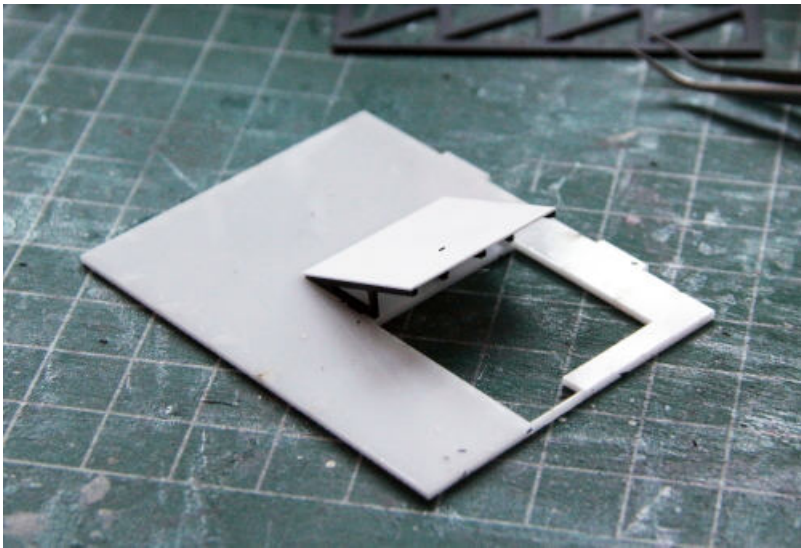
Logos and logo parts.

Be VERY careful when you remove CareNow, Qdoba and Firehouse from the sprue. Acrylic is very breakable when in small dimensions.

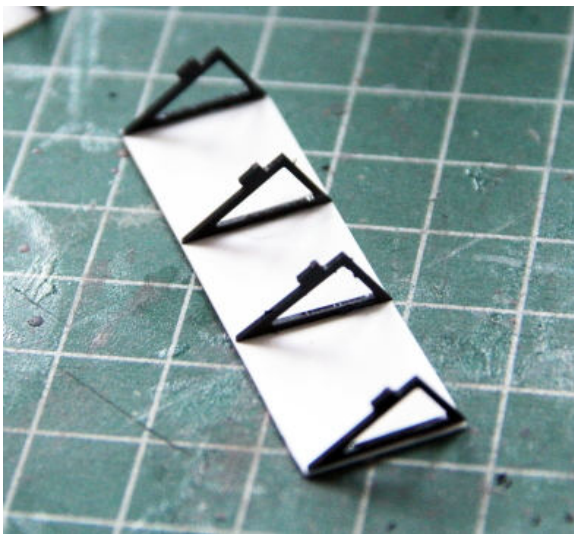
Parts preparation:



Cut out the awning brackets from the sprue (wide awning brackets shown). Use the back side of the wall piece as a template and insert the brackets in the slots. DO NOT GLUE. (Narrow awning brackets shown). There are 6 long brackets and 16 short brackets.



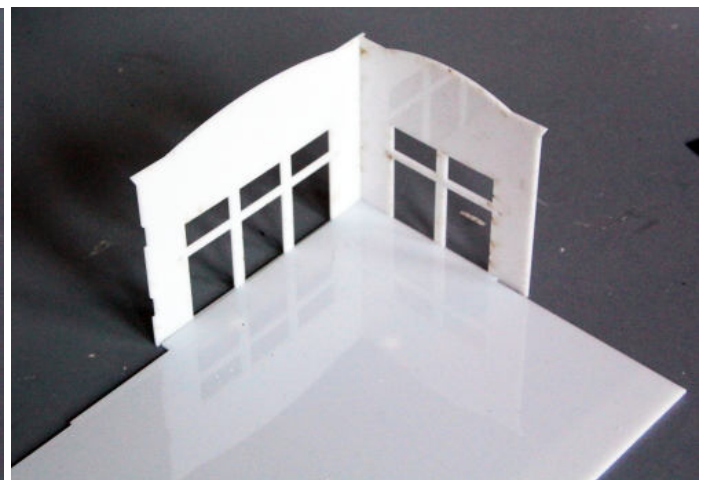
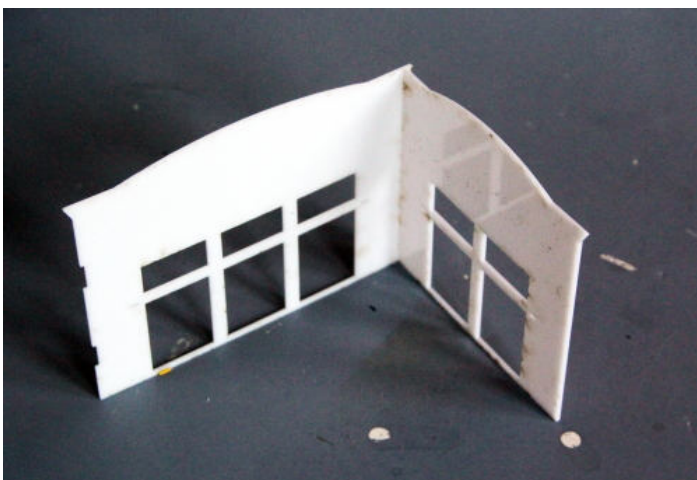
Glue the awning to the brackets. This is easier if you use a glue with a thicker viscosity, I use Model Master Plastic Cement for Models. Remove the complete awning when the glue has set.



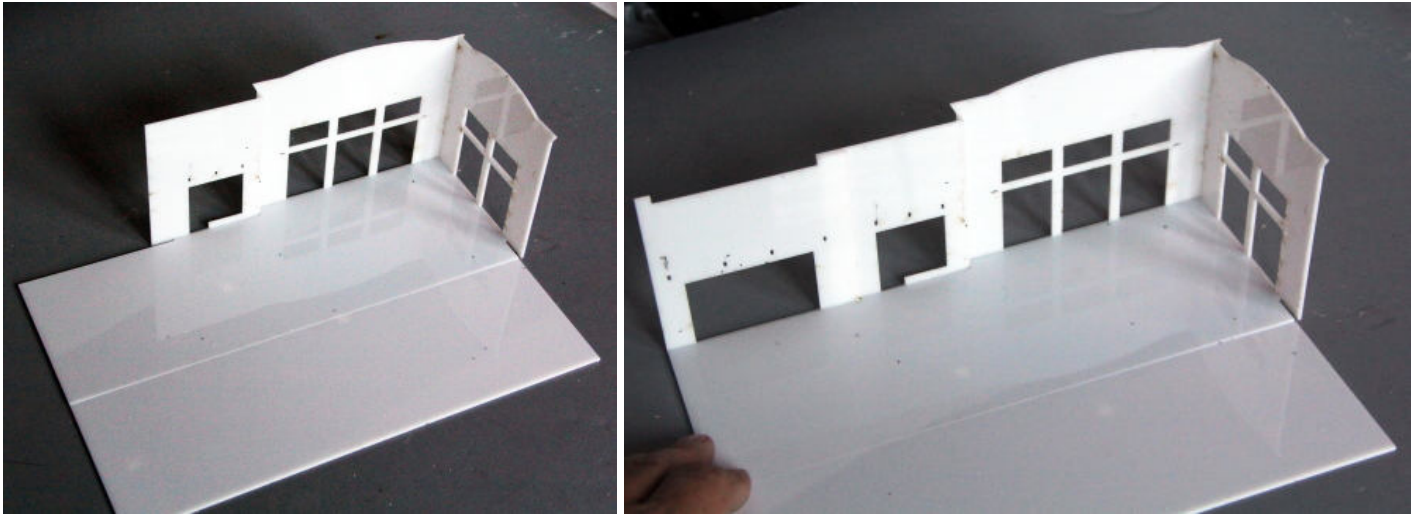
Repeat this process on the wide awnings

Assembly:

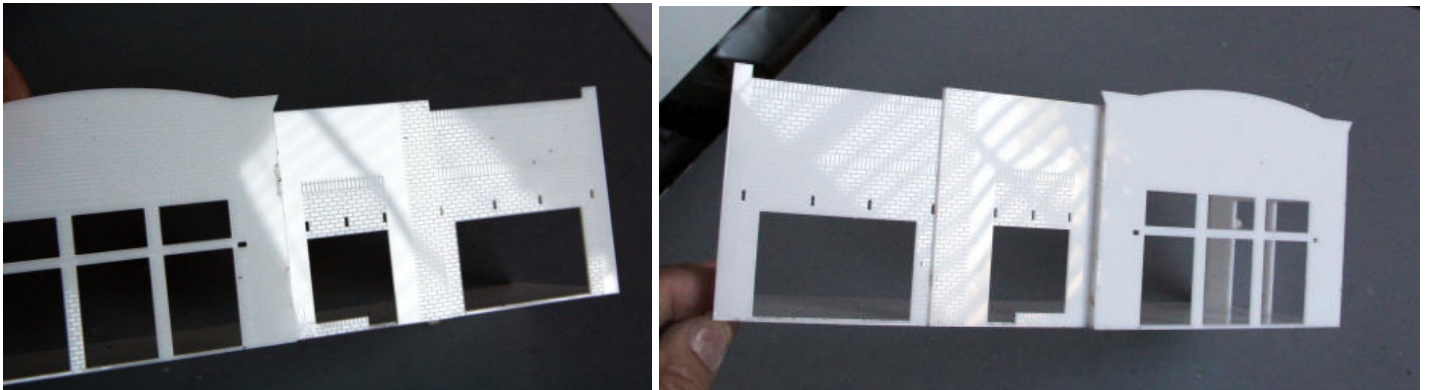
Start by gluing the left corner section walls together. Glue the floor plate to the INSIDE of the walls – not on top.



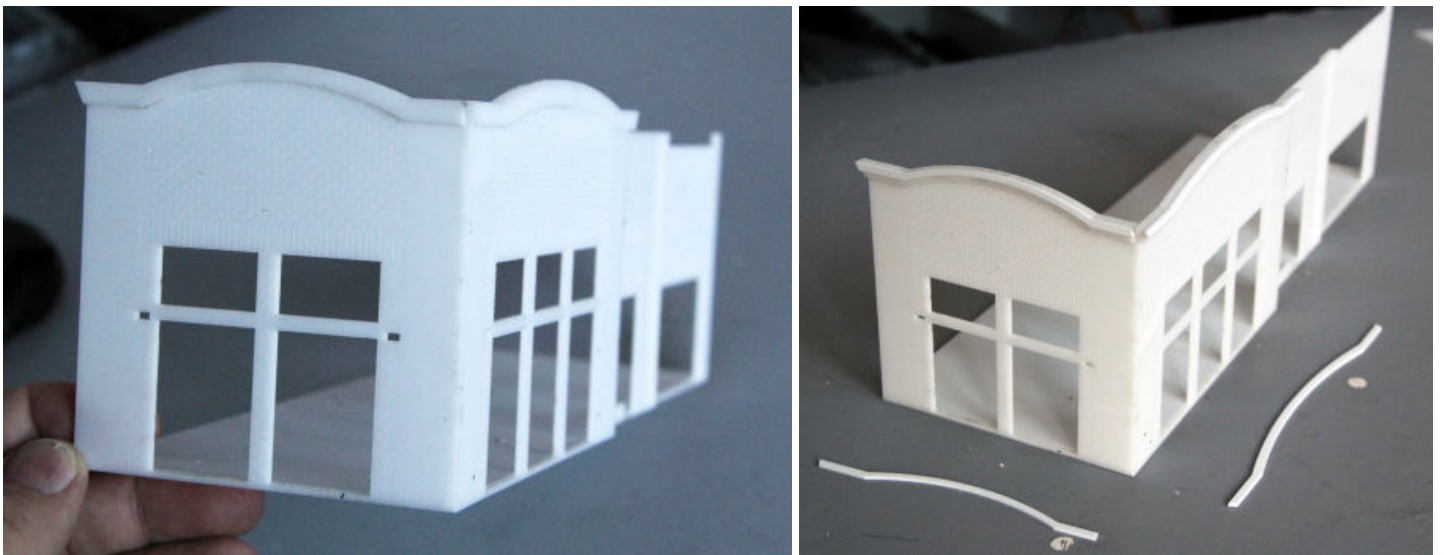
Let the glue set for 5-10 minutes before moving on. The setting time for the glue is much longer on acrylic than on styrene.



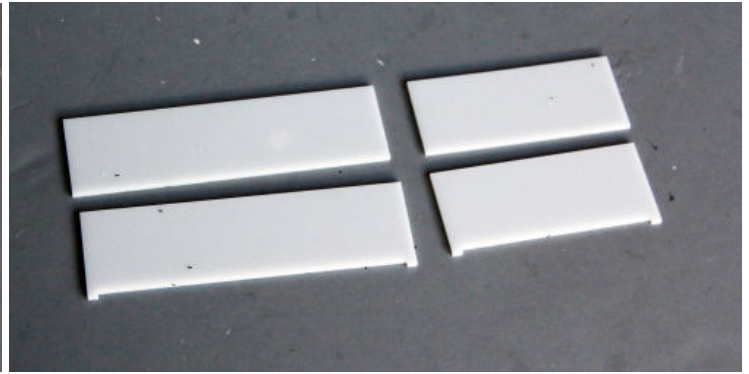
Glue the narrow wall strip in place, followed by the next wall piece. Continue with the fourth wall piece.



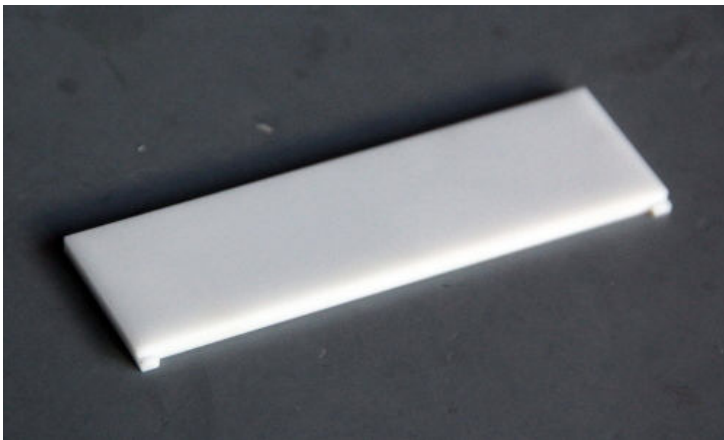
Repeat the process on the right section.



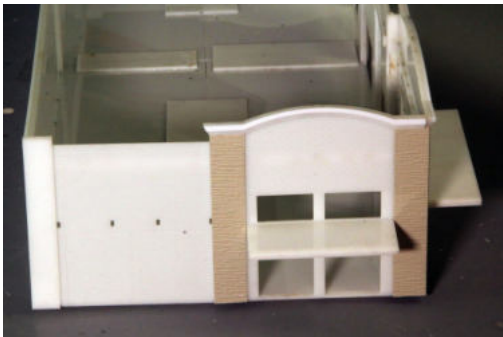
Glue on the top wall trim as shown. There is a wide acrylic piece and a narrow styrene piece.



This is how it should look. Laminate the solid awning pieces for the front and side windows.

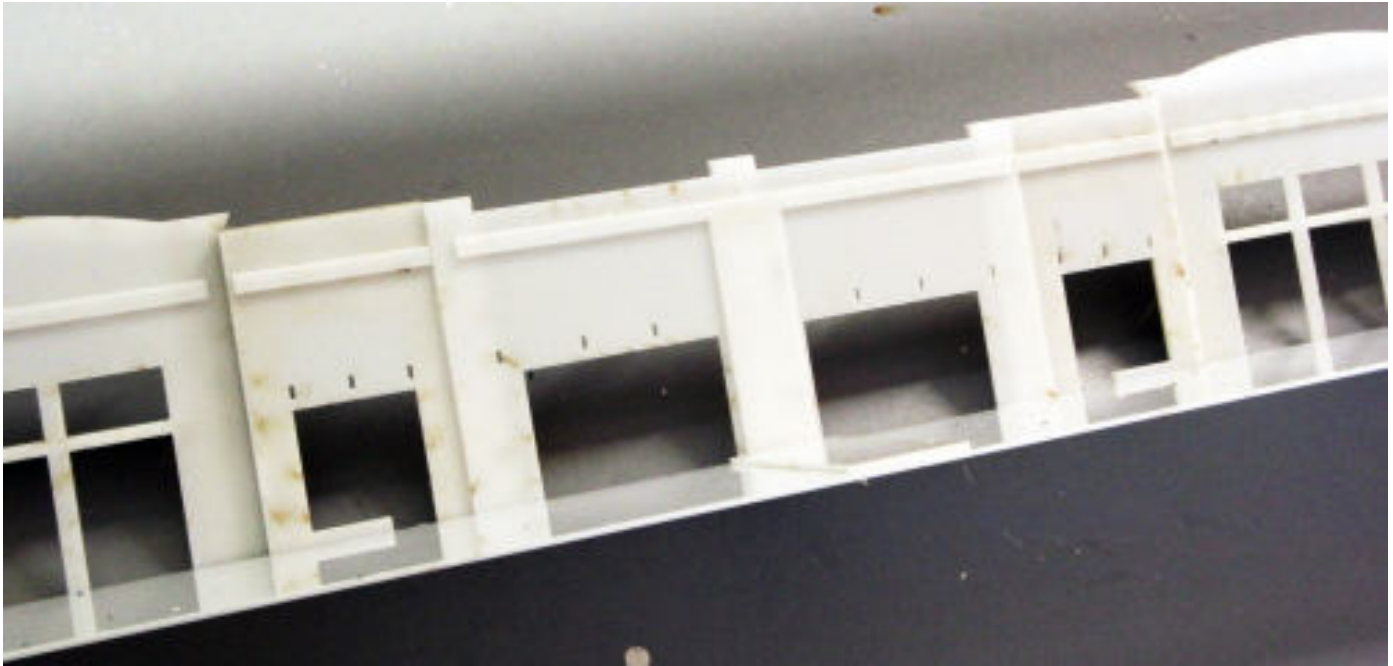


Mount the awnings into the holes in the walls as shown.



Slide the rear side walls into the slot and glue them on, continue mounting the rear wall pieces. Glue the random stone trim to the wall as shown. Assemble the two halves of the building, using the brick strip across the middle joint. The other 2 brick strips go on the ends of the side walls. Then glue the random stone trim to the front as shown.

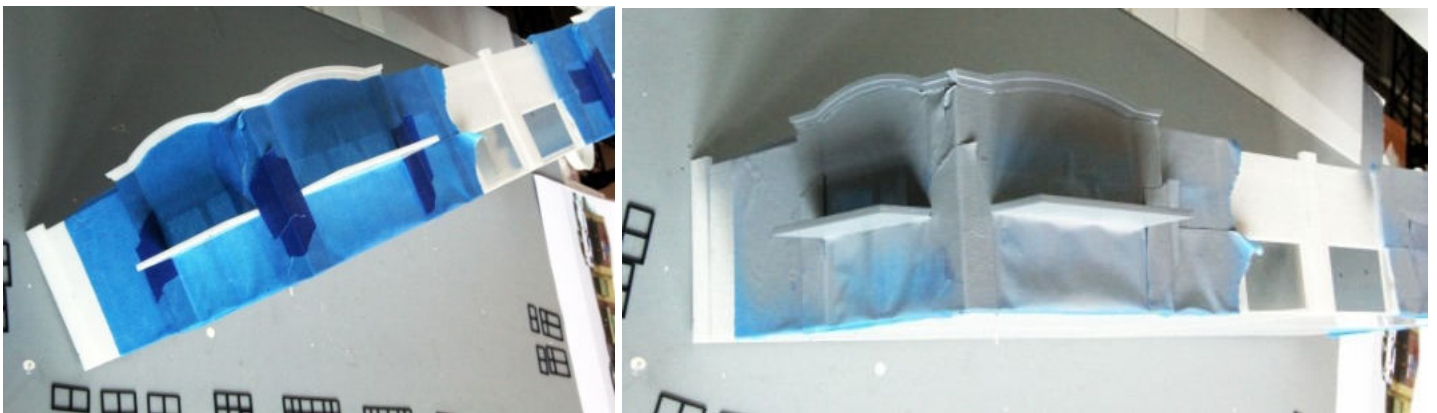




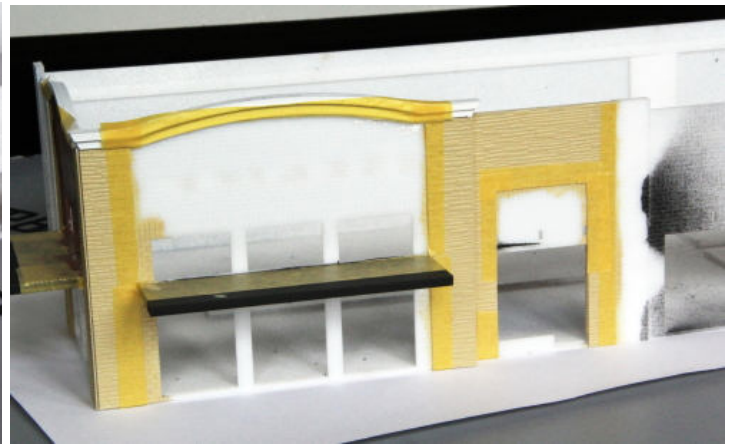
First you have to use the inside support strip for the middle joint as a height guide for mounting the roof support strips all around the inside walls. When they are in place, you glue it across the joint as shown.

Painting & finishing

Leave the self-adhesive window frames on the sprue and paint them flat black. When the paint is dry, carefully cut the frames out of the sprue with a sharp hobby knife.



Cover the brick walls with masking tape before you spray the top trim and awnings with primer. If you are going to brush paint the bricks (recommended), the paints may dissolve the primer. Spray the top trim white and the awnings satin or flat black. When the paint has dried, remove the masking tape.

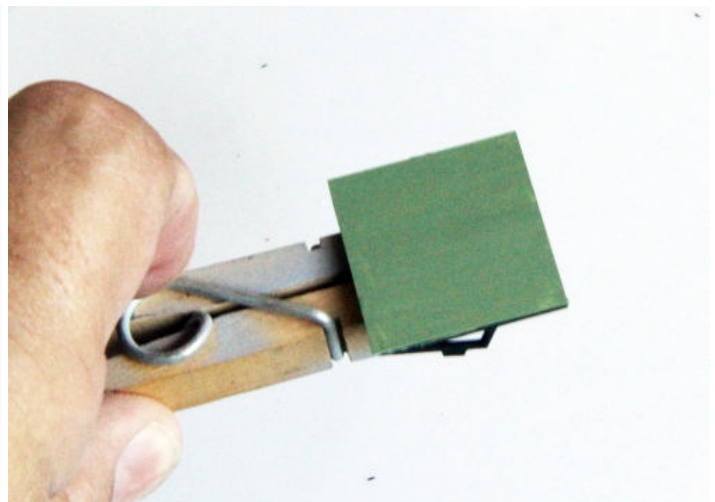
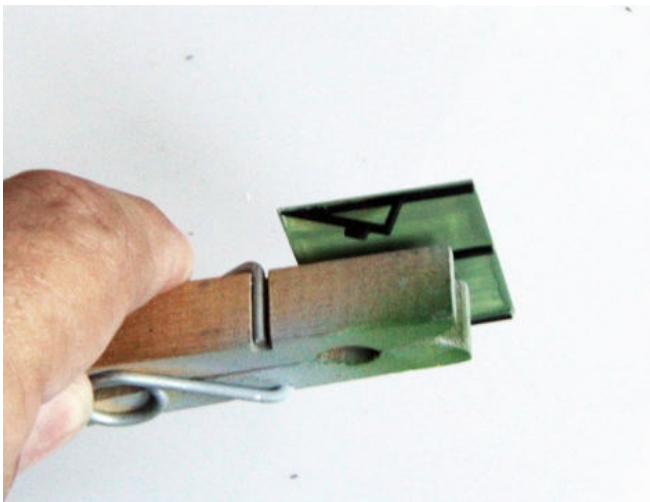


Put masking tape on the awnings to protect them from spilling when you paint the walls. Start painting the random stone a brick yellow. When the paint is dry, mask around the bricks and paint them a reddish brown. You may need to apply a second coat to make the paint cover well.



If you want the mortar lines to stand out, apply Roberts Brick Mortar Formula. Use as directed on the bottle. It is very easy to use and leaves a great result.

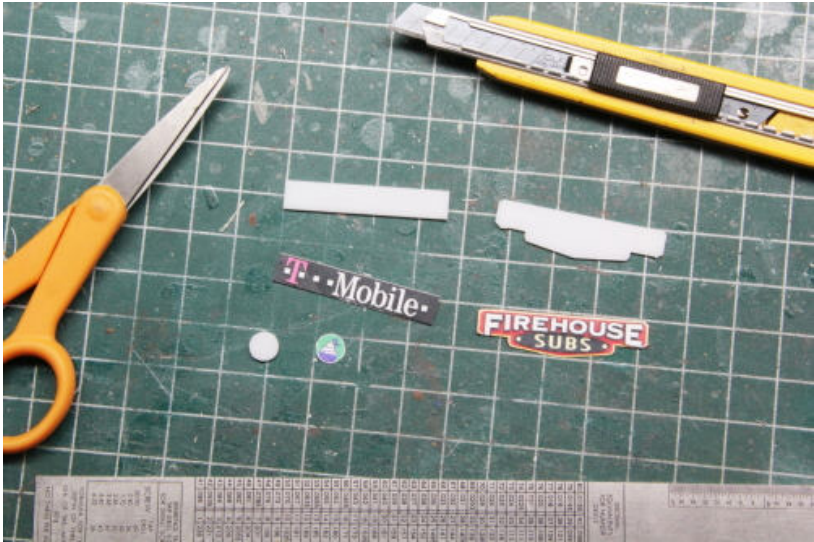
Give the complete building a coat of Testors Dullcote.



Paint the inside of the awnings light green, then hold the bracket with a clothespin and paint the outside.



Pry the "Yogurt Mountain" and "Firehouse" letters out of the sprue and mount them on a piece of cardboard with double-sided tape, along with the "Qdoba" and "CareNow" logos. Brush paint the letters and logos. Paint "Yogurt Mountain" light-to-medium green, "Qdoba" white, and "CareNow" red, light blue and white.



Before handling the self-adhesive decals, you should spray it with a coat of Krylon Kristal Clear acrylic or Testor's DullCote to protect the print. Cut the logos out using a steel ruler and a sharp hobby knife.

Mount the "Firehouse" and "T-Mobile" logos on the matching acrylic pieces.

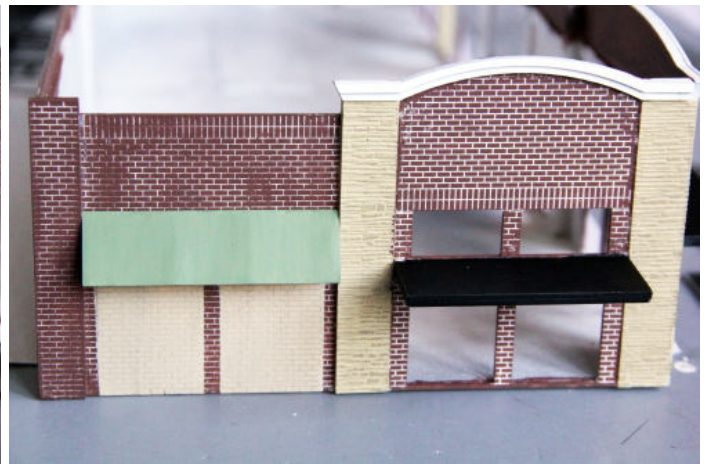
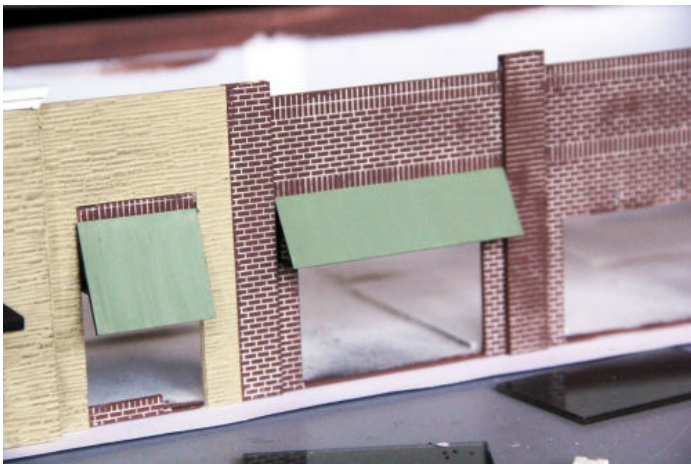


Mount the "Yogurt Mountain" letters on the clear base with liquid glass. On the picture is a Humbrol Liquid Glass but Formula 500 Canopy Glue is also great for the job.

There is protective paper on the back of the clear acrylic. Leave this in place until you are ready to install the sign.



Glue the “Firehouse” letters to the logo base with Woodland Scenics Scenic Cement. It dries up clear, flat, and invisible. Apply the glue to the letters with the tip of your little finger.



Mount the awnings into the holes the wall. This a press fit so you should not have to glue.



Mount the window glass inside. Hold it in place and run a drop of glue around the edges. If you want tinted glass as on this demonstration model, apply some car window film to the inside of the glass before mounting. This you can get at any auto parts store.

Install the self-adhesive window frames in the openings by removing the protective paper and stick them to the glass. Be **very careful** to position them correct in the first attempt, once the glue sticks you can't remove it again without destroying the part.



Mount the logos on the wall with Woodland Scenics Scenic Glue.



Remove the protective paper from the back of the "Yogurt Mountain" sign and glue it to the wall with a very small amount of liquid glass.



Glue the two halves of the roof together and paint it flat black or grimy black. Drop it in place.

Enjoy your Strip Mall on your layout.

Paint used on this model:

Humbrol 70 Brown
 Humbrol 103 Light Yellow
 Model Master FS34227 Pale Green

Testors 1249 Flat black spray
 Testors 1260 Dullcote spray

Here are some other products you may enjoy in a future project:



#DN-001 Denny's Restaurant



#DP-001 Domino's Pizza take-out



#DP-003 Domino's latest design



#CS-001 Dave's Coffee Shop



#TB-005 1970's Taco Bell



#TB-006 1980's Taco Bell



#TB-001 Taco Bell Restaurant



#TB-003 New Taco Bell Restaurant



#KFC-001 KFC Restaurant



#SW-001 Subway Restaurant



#SW-002 Subway latest design



#WH-001 Waffle House Restaurant



#HD-001 Hardee's Restaurant



#CJ-001 Carl's Jr. Restaurant



#PH-001 Pizza Hut Restaurant



#EX-001 Exxon Gas Station & Store



#SC-001 Rural Shamrock Gas Station



#SH-001 Shell Gas Station & Store



#GS-001 Gas Station backdrop



#DG-001 Dollar General Store



#DG-002 Dollar General, latest design



#LO-001 Lowe's backdrop building



#CVS-001 CVS Pharmacy



#FS-001 Modern City Fire Station



#JL-001 Jiffy Lube



#ML-001 Strip Mall backdrop #1



#ML-002 Strip Mall backdrop #2



Mall complex



#ML-003 Office Depot backdrop



#ML-005 Pier 1 Imports backdrop



#ML-006 Dollar Tree backdrop



#SMFS-001 Summit Motel, full version



#BK-001 First State Bank



#BK-002 Capital One Bank



#DA-001 Discount Auto Parts



#DP-004 MKT Depot



#ST-001 Starbucks Coffee



#WM-001 Walmart backdrop building



#ML-008 Modern Strip Mall

Keep updated for new products on our website: www.summit-customcuts.com