

Strip Mall #2 backdrop building kit in HO scale

Parking lot base and cars not included

This kit includes all building parts and signs milled in white styrene plastic, laser cut micro-plywood, clear window glazing, logos and decals. All parts fit together but may need light sanding in joints for cosmetic reasons. The model needs painting.

Some model building and painting skills are required.



Manufactured by Custom Cuts by 

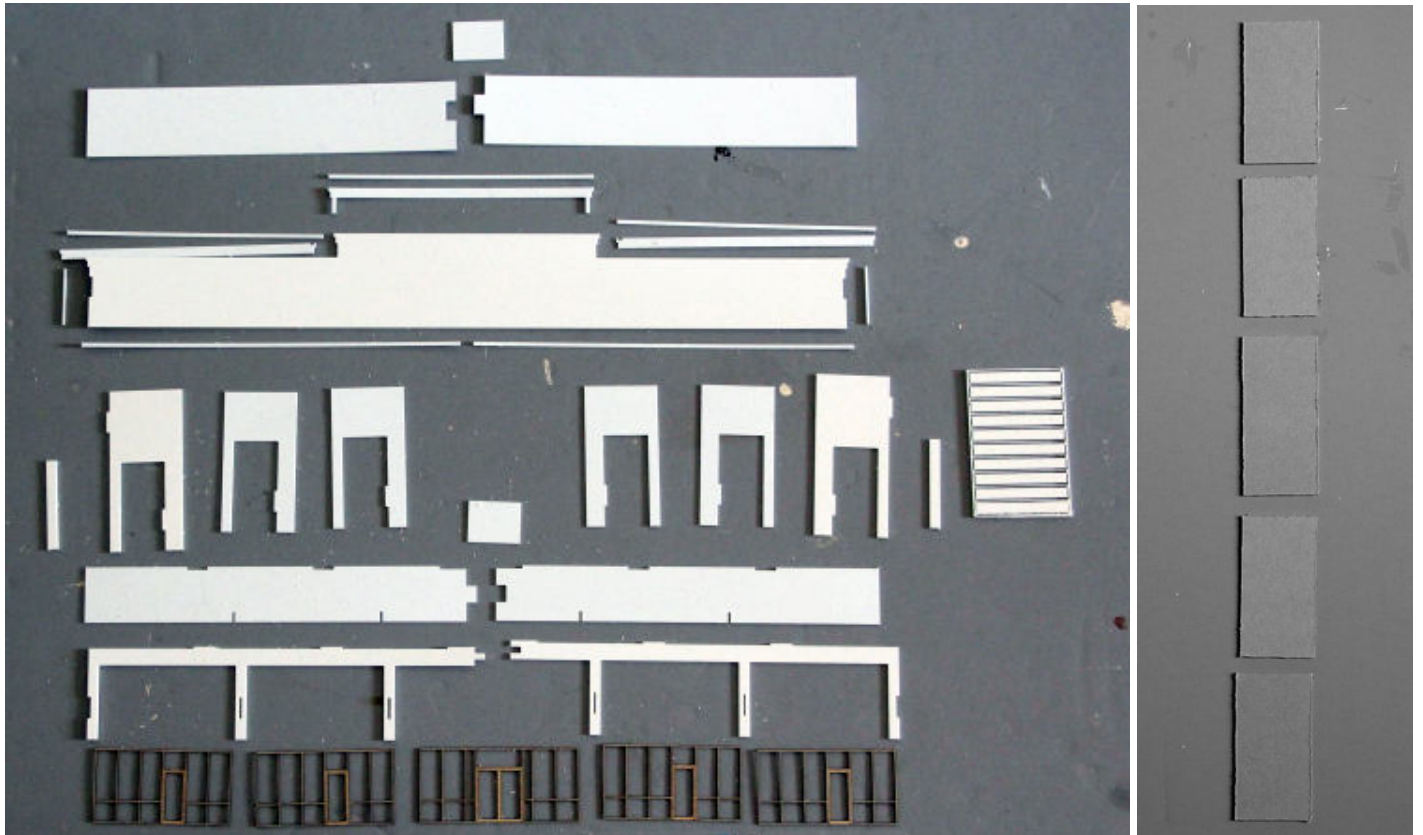
Summit USA LLC, 512A Ford Street, Lake Charles, LA 70601
www.summit-customcuts.com

Assembly instructions for Strip mall backdrop building

Thank you for buying this Strip Mall backdrop building. Please take some time to read these instructions before you begin assembling.

This kit is milled in styrene plastic and is very easy to glue together using Plastruct Plastic Weld or similar glue products. The wall parts are tabbed and slotted for easier assembly.

Take your time to identify all parts, lay them out and clean them for any burrs before gluing them together.

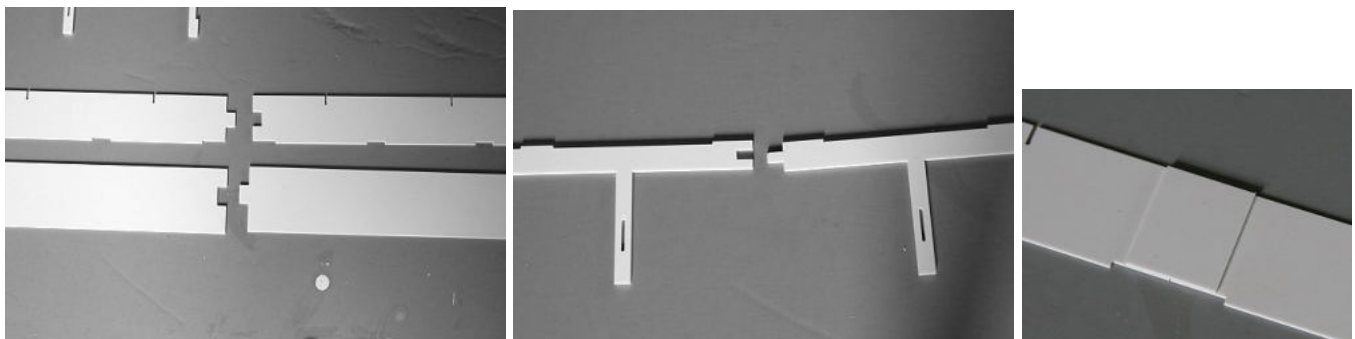


Parts overview

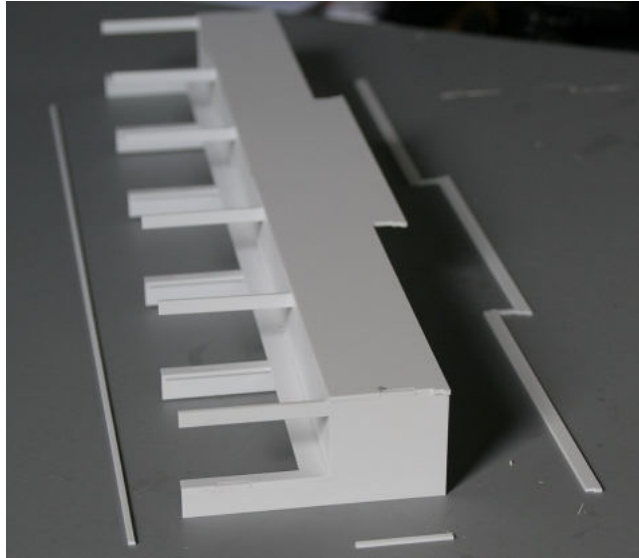
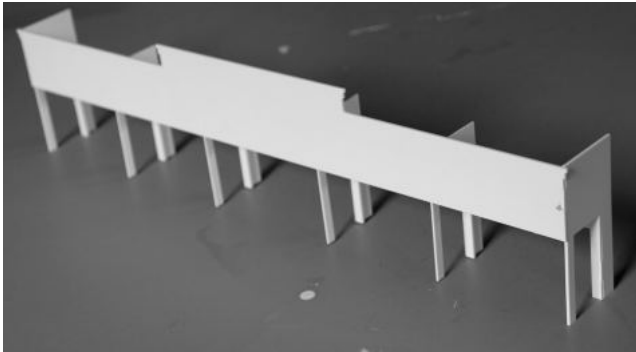
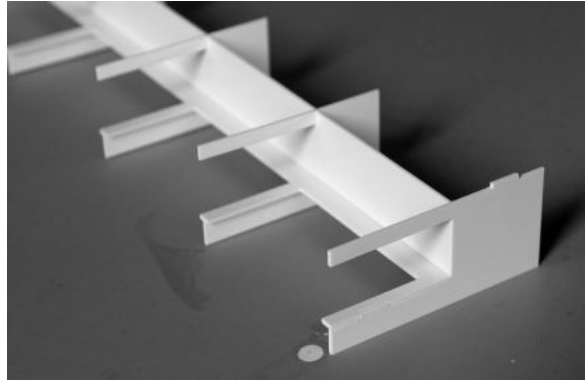
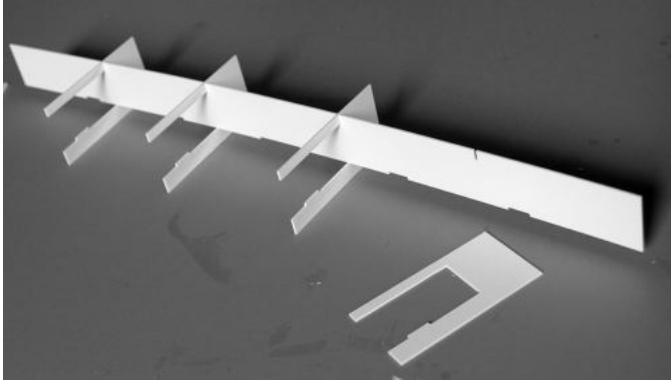
Window glazing

Assembly

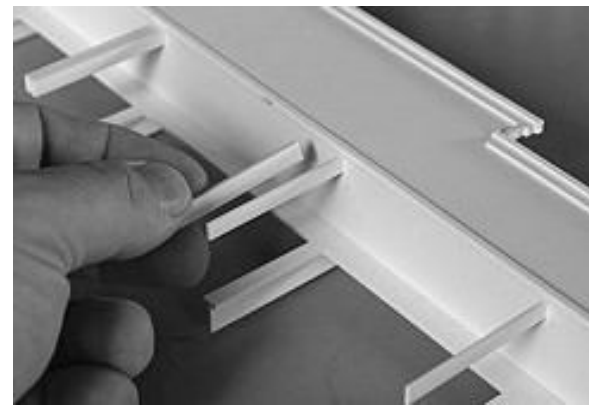
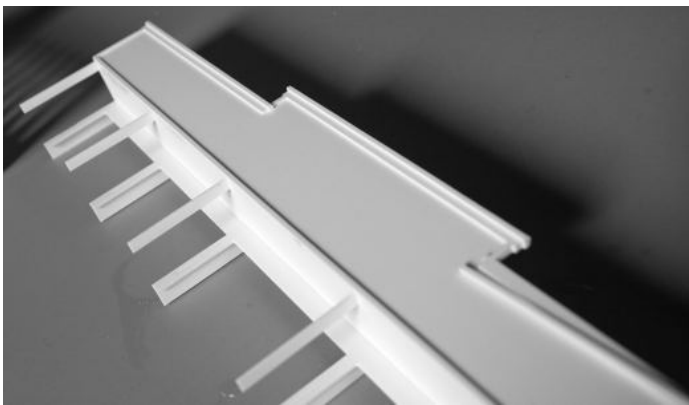
Start by assembling the two halves of the roof pieces and the front wall frame as shown, then secure the joint of the 2 roof pieces with the small rectangular piece.



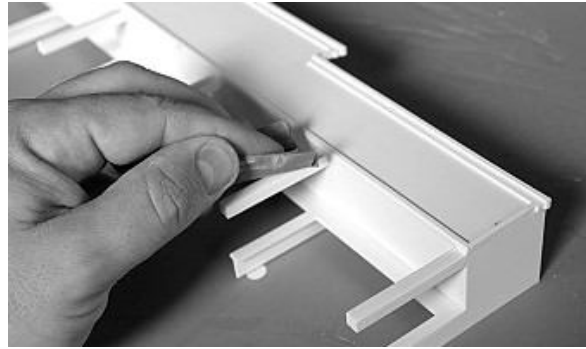
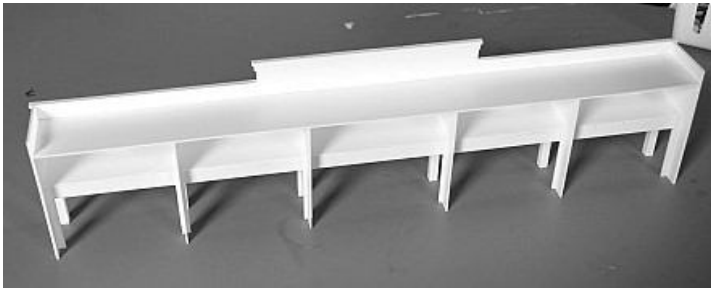
Attach the column frames to the arcade ceiling, then mount the storefront wall and the end walls, fitting the tabs and slots.



Glue on the front wall and the trim pieces around the edges. On top of the upper trim piece, glue on the trim strips as shown below, aligning with the top edges.



On the 4 middle columns, glue the 0.08" strips on both sides of the column, making it square. On the 2 outer columns, glue one 0.06" and one 0.08" strip on the inside of the column.



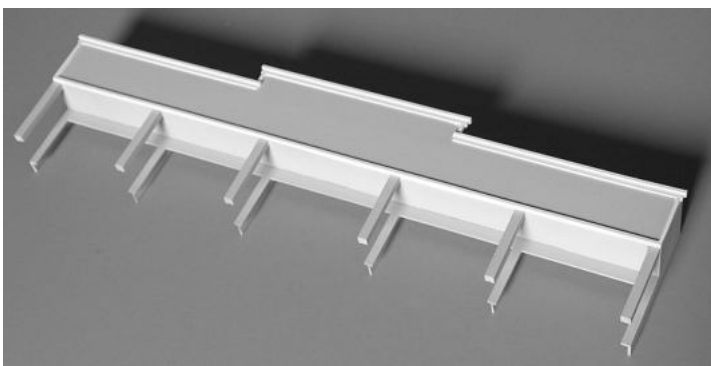
Glue on the roof as shown. For best result, sand the columns to hide the joints.

Painting

You can paint this strip mall any colors you like. For this demonstration model I used Floquil Antique White as the base color and Reefer White as the accent trim color. The roof is Grimy Black.

Break the small connectors in the middle of each end of the logo sprues and VERY CAREFULLY wiggle the logos out. The acrylic is very brittle.

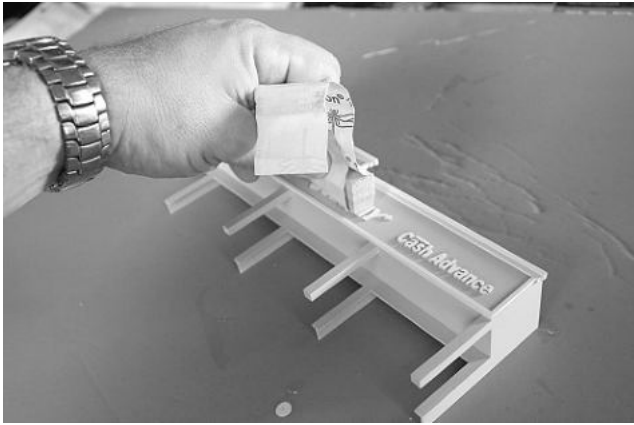
You may want to glue the milled logos on the wall before painting, this way they are much easier to handle, but a little harder to paint the logo color.



If you chose to paint the building before mounting the logos, paint the logos the base color to help hide the connecting strip.

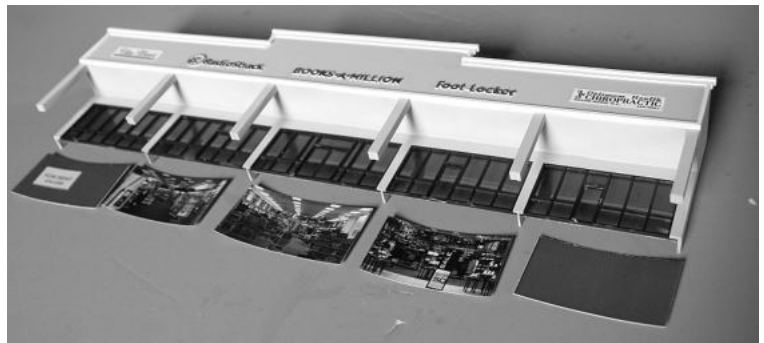
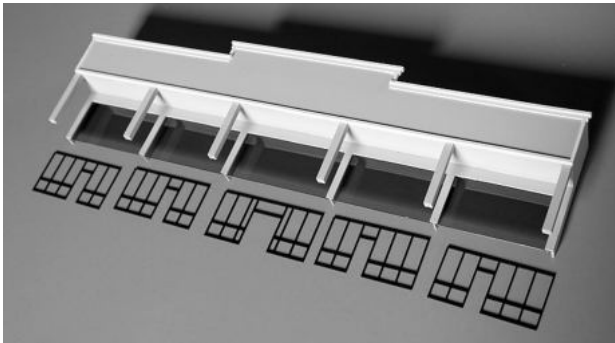
Paint the door & window frames black.

Once dried, carefully sand the top surface of the letters to remove the paint. Use extreme caution not to break the connecting strip. Carefully brush the right letter color on with paint or apply it with a permanent Sharpie marker.



Final assembly

Mount the window glazing from behind. The window glazing is clear. If you want it tinted as on this demonstration model, you can apply some car window film. This you can buy in any auto parts store.



Mount the window frames by peeling off the backing paper and sticking the frames to the glass. Be VERY careful to position the frames correct in the first attempt, once the glue sticks you can't remove it without destroying the piece.

Finally mount the interior pictures behind the glass, holding it in place with a piece of tape on the backside.

Enjoy your Strip Mall on your layout.

You can use this strip mall as a stand-alone building or you can combine it with ML-001 Strip Mall backdrop building #1 and make an L-shaped mall or a longer mall.



You can even add the ML-003 Office Depot backdrop building between the strip malls and make a long mall complex.

Here are some other products you may enjoy in a future project:



#DN-001 Denny's Restaurant



#DP-001 Domino's Pizza take-out



#DP-003 Domino's latest design



#CS-001 Dave's Coffee Shop



#TB-005 1970's Taco Bell



#TB-006 1980's Taco Bell



#TB-001 Taco Bell Restaurant



#TB-003 New Taco Bell Restaurant



#KFC-001 KFC Restaurant



#SW-001 Subway Restaurant



#SW-002 Subway latest design



#WH-001 Waffle House Restaurant



#HD-001 Hardee's Restaurant



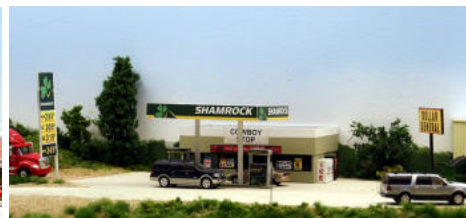
#CJ-001 Carl's Jr. Restaurant



#PH-001 Pizza Hut Restaurant



#EX-001 Exxon Gas Station & Store



#SC-001 Rural Shamrock Gas Station



#SH-001 Shell Gas Station & Store



#GS-001 Gas Station backdrop



#DG-001 Dollar General Store



#DG-002 Dollar General, latest design



#LO-001 Lowe's backdrop building



#CVS-001 CVS Pharmacy



#FS-001 Modern City Fire Station



#JL-001 Jiffy Lube



#ML-001 Strip Mall backdrop #1



#ML-002 Strip Mall backdrop #2



Mall complex



#ML-003 Office Depot backdrop



#ML-005 Pier 1 Imports backdrop



#ML-006 Dollar Tree backdrop



#SMFS-001 Summit Motel, full version



#BK-001 First State Bank



#BK-002 Capital One Bank



#DA-001 Discount Auto Parts



#DP-004 MKT Depot



#ST-001 Starbucks Coffee



#WM-001 Walmart backdrop building



#ML-008 Modern Strip Mall

Keep updated for new products on our website: www.summit-customcuts.com