


Office Depot backdrop building kit in HO scale

Parking lot base and cars not included

This kit includes all building parts and signs milled in white and black styrene plastic, clear window glazing, logos and decals. All parts fit together but may need light sanding in joints for cosmetic reasons. The model needs painting.

Some model building and painting skills are required.



Manufactured by Custom Cuts by 

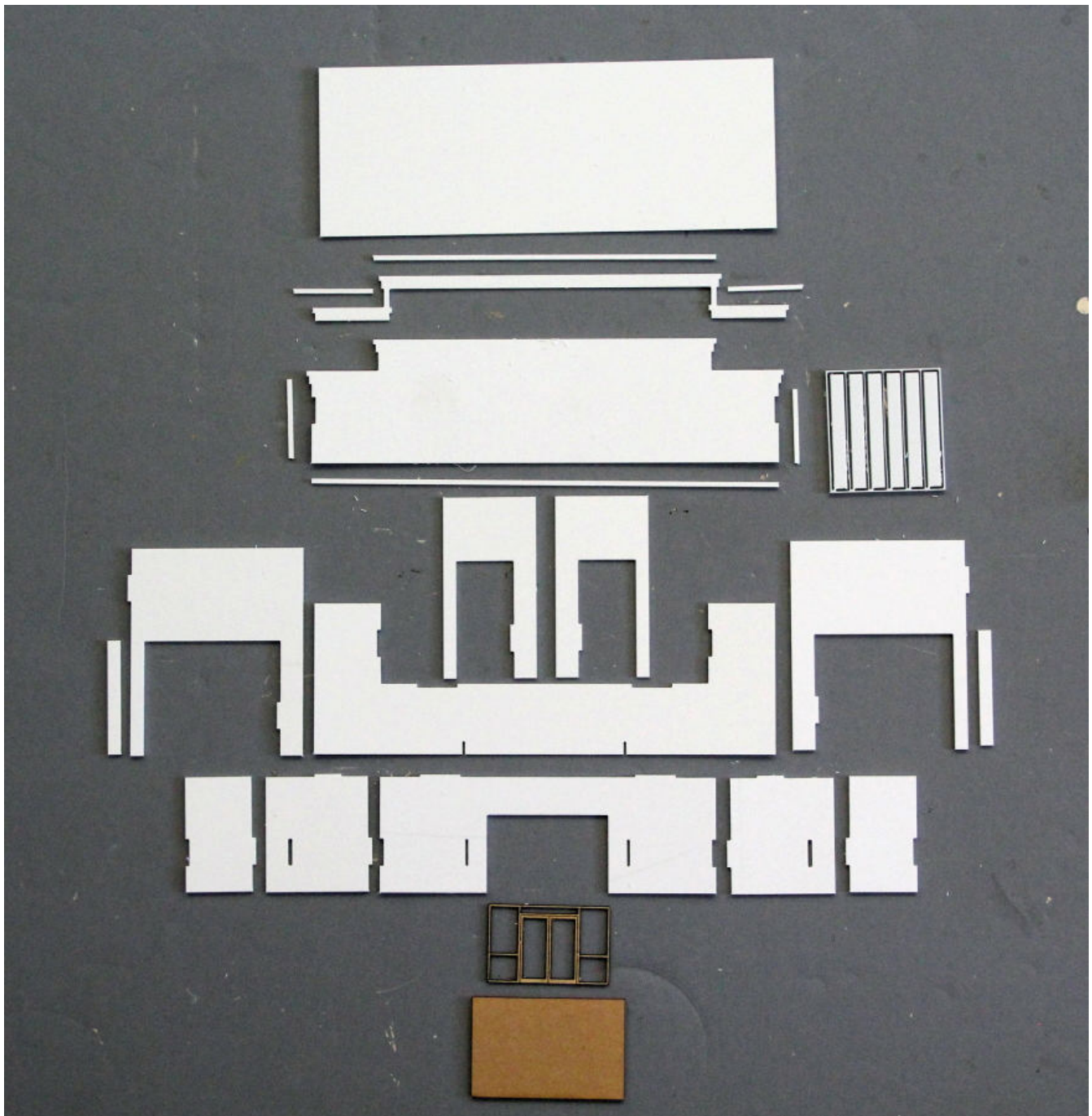
Summit USA LLC, 512A Ford Street, Lake Charles, LA 70601
www.summit-customcuts.com

Assembly instructions for Office Depot backdrop building

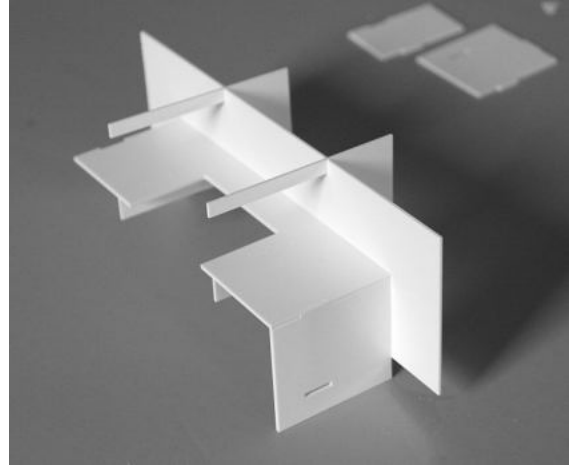
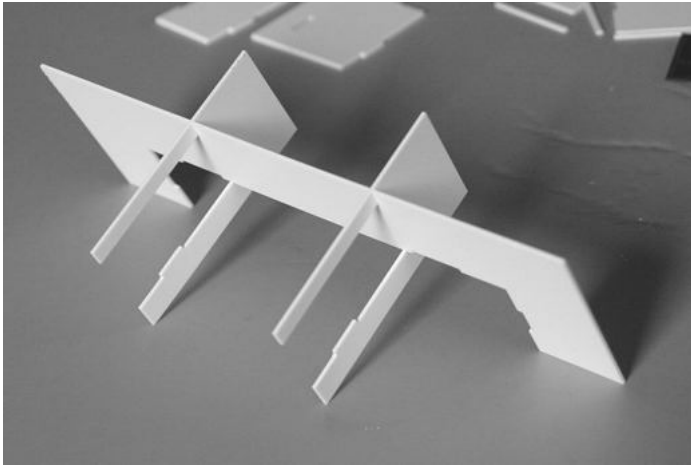
Thank you for buying this Office Depot backdrop building. Please take some time to read these instructions before you begin assembling.

This kit is milled in styrene plastic and is very easy to glue together using MicroMark Samestuff, Plastruct Plastic Weld or similar glue products. The wall parts are tabbed and slotted for easier assembly.

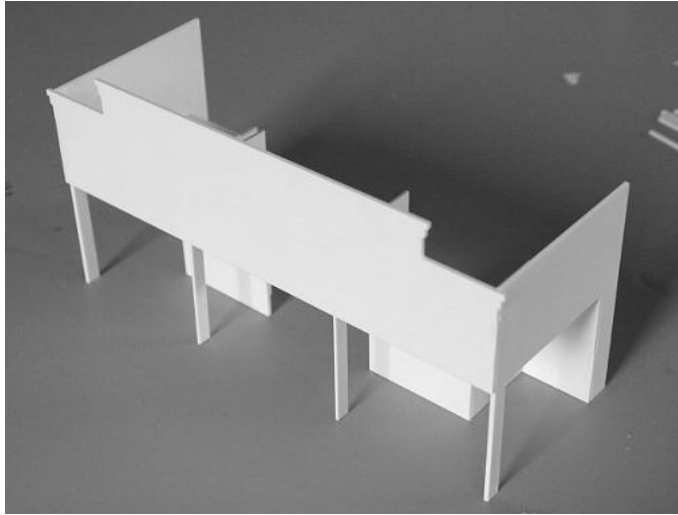
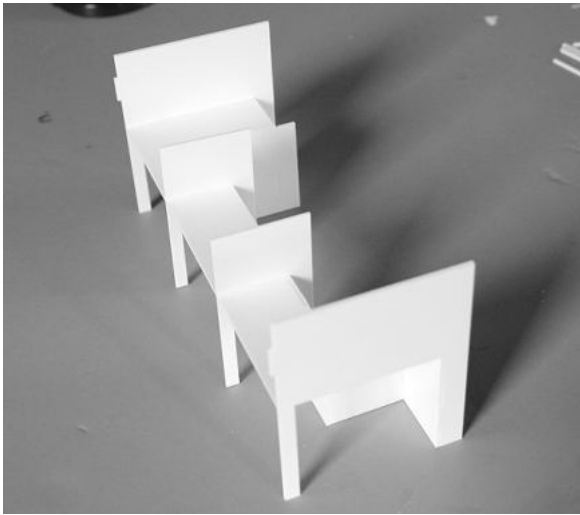
Take your time to identify all parts, lay them out and clean them for any burrs before gluing them together.



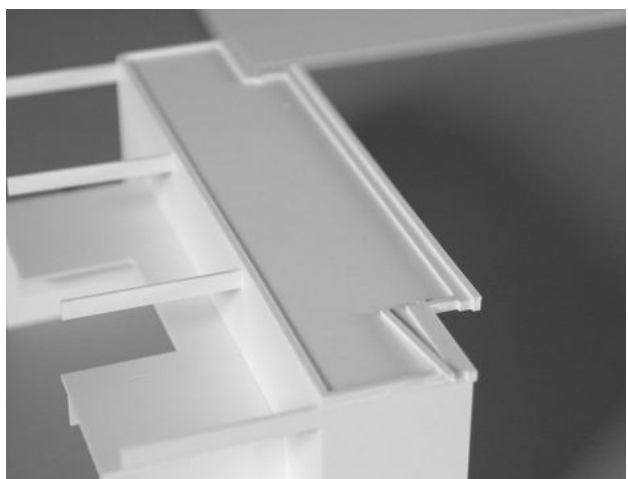
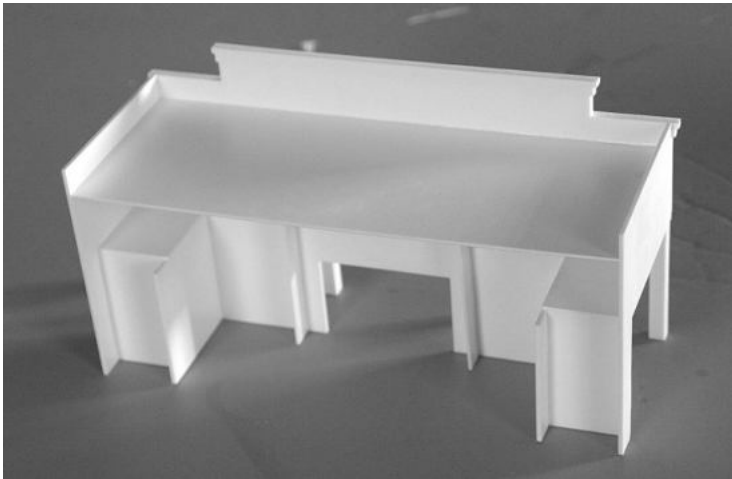
Parts overview



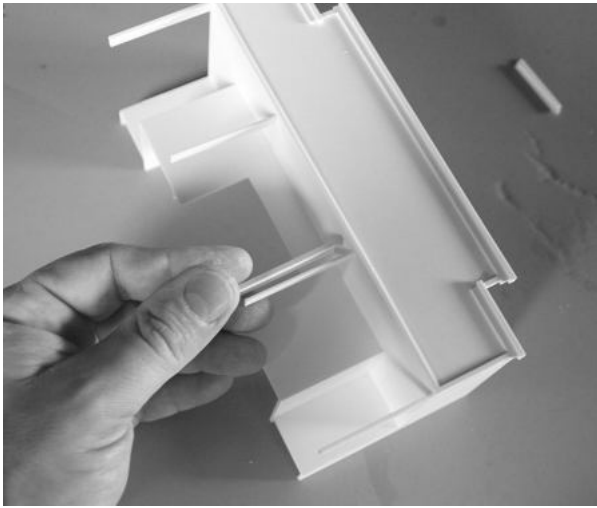
Attach the column frames to the arcade ceiling, then mount the storefront wall and the lower end walls, fitting the tabs and slots.



Then mount the small wall pieces perpendicular to the lower end walls and the high endwalls and the front facade.



Mount the roof. Glue on the trim pieces around the edges. On top of the upper trim piece, glue on the trim strips as shown below, aligning with the top edges.



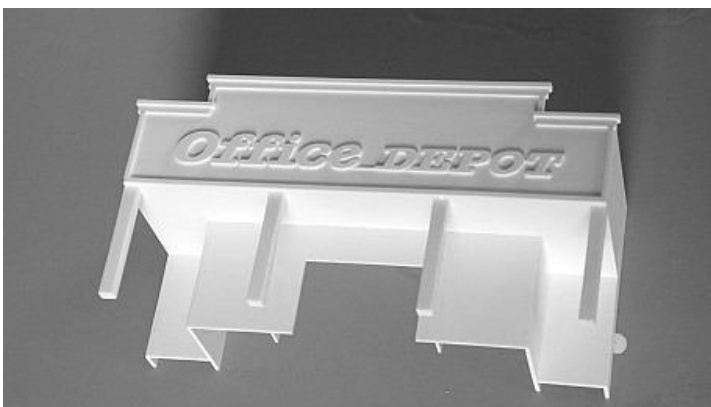
On the 2 middle columns, glue the 0.08" strips on both sides of the column, making it square. On the 2 outer columns, glue one 0.06" and one 0.08" strip on the inside of the column.

For best result, sand the columns to hide the joints.

Painting

You can paint this strip mall any colors you like. For this demonstration model I used Floquil Antique White as the base color and Reefer White as the accent trim color.

You may want to glue the milled logo on the wall before painting, this way it is much easier to handle, but a little harder to paint the logo color.



If you chose to paint the building before mounting the logo, paint the logo the base color to help hide the connecting strip.

Paint the entrance door black.

Once dried, carefully sand the top surface of the letters to remove the paint. Use extreme caution not to break the connecting strip. Carefully brush the right letter color on with paint or apply it with a permanent Sharpie marker.



Final assembly

Mount the window glazing from behind. The window glazing is clear. If you want it tinted as on this demonstration model, you can apply some car window film. This you can buy in any auto parts store.



Mount the self-adhesive window/door frame on the glazing by peeling off the backing paper and sticking it to the glass. Be VERY CAREFUL to position it correct in the first attempt, once the glue sticks you can't remove it without destroying the part.

Enjoy your Office Depot on your layout.

You can use this Office Depot as a stand-alone building or you can combine it with the ML-001 Strip Mall backdrop building #1 and the ML-002 Strip Mall backdrop building #2 on one or both sides to make a mall complex. The total size of the mall complex is 35 3/4" x 3 3/4 " x 3 1/2" (907x70x95 mm)



Here are some other products you may enjoy in a future project:



#DN-001 Denny's Restaurant



#DP-001 Domino's Pizza take-out



#DP-003 Domino's latest design



#CS-001 Dave's Coffee Shop



#TB-005 1970's Taco Bell



#TB-006 1980's Taco Bell



#TB-001 Taco Bell Restaurant



#TB-003 New Taco Bell Restaurant



#KFC-001 KFC Restaurant



#SW-001 Subway Restaurant



#SW-002 Subway latest design



#WH-001 Waffle House Restaurant



#HD-001 Hardee's Restaurant



#CJ-001 Carl's Jr. Restaurant



#PH-001 Pizza Hut Restaurant



#IH-001 IHOP Restaurant



#EX-001 Exxon Gas Station & Store



#SC-001 Rural Shamrock Gas Station



#SH-001 Shell Gas Station & Store



#DG-001 Dollar General Store



#DG-002 Dollar General, latest design



#LO-001 Lowe's backdrop building



#CVS-001 CVS Pharmacy



#FS-001 Modern City Fire Station



#JL-001 Jiffy Lube



#ML-001 Strip Mall backdrop #1



#ML-002 Strip Mall backdrop #2



Mall complex



#ML-003 Office Depot backdrop



#ML-005 Pier 1 Imports backdrop



#ML-006 Dollar Tree backdrop



#SMFS-001 Summit Motel, full version



#BK-001 First State Bank



#BK-002 Capital One Bank



#DA-001 Discount Auto Parts



#DP-004 MKT Depot



#ST-001 Starbucks Coffee



#WM-001 Walmart backdrop building



#ML-008 Modern Strip Mall

Keep updated for new products on our website: www.summit-customcuts.com