



Assembly Instructions for Summit Motel

Kits # SMFS and SMBD

Introduction

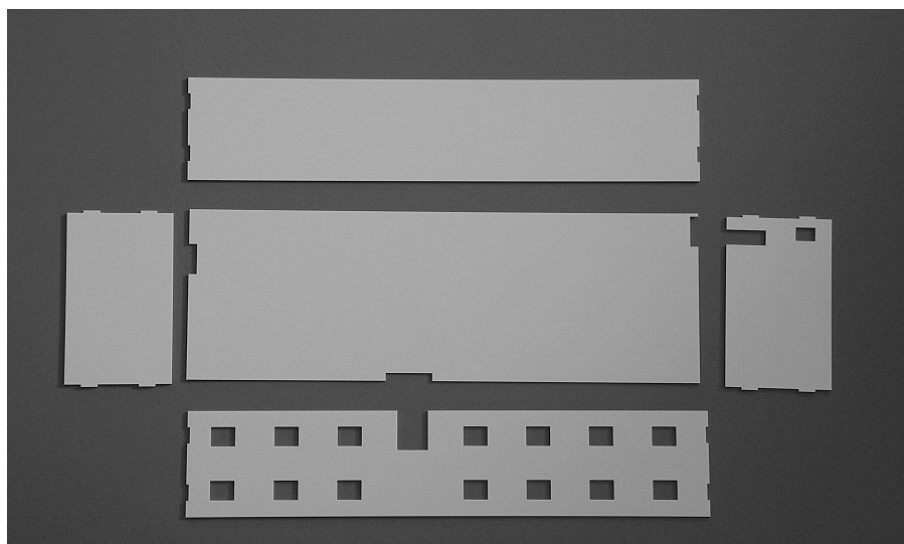
Thank you for your purchase of the Summit Motel. This modern motel can be converted to almost any chain motel of your choice, depending on the colors you paint it. Because of copyright laws we cannot supply the logos, but you can copy them from the Internet on the motel's homepage and print them. Summit Motel signs are supplied with this kit.

This motel comes in to 2 versions: SMFS - the full size version with 2 wings and SMBD - the backdrop version with only the main building, tower and the entrance awning.

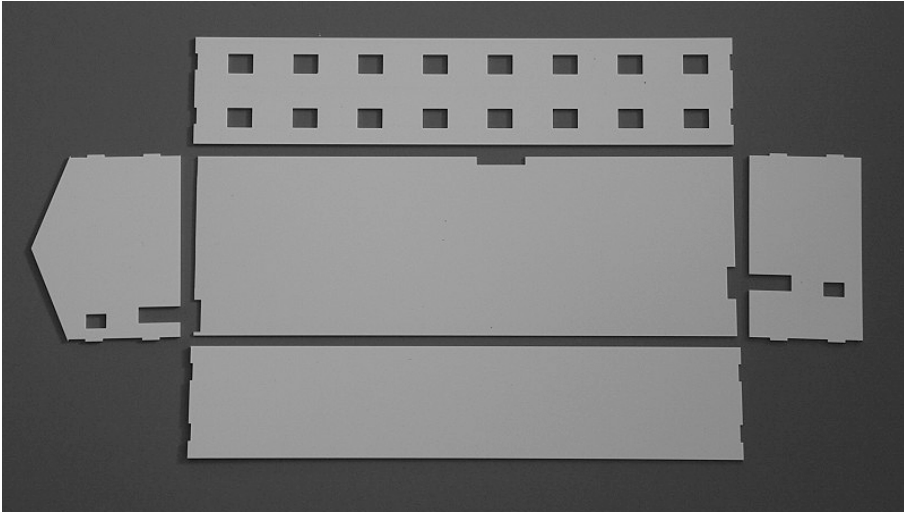
Before you begin:

This kit is milled in styrene plastic and is very easy to glue together using Plastruct Plastic Weld or similar glue products. Please take your time to identify all parts, lay them out, clean them for any sprues and read these instructions before you start putting them together.

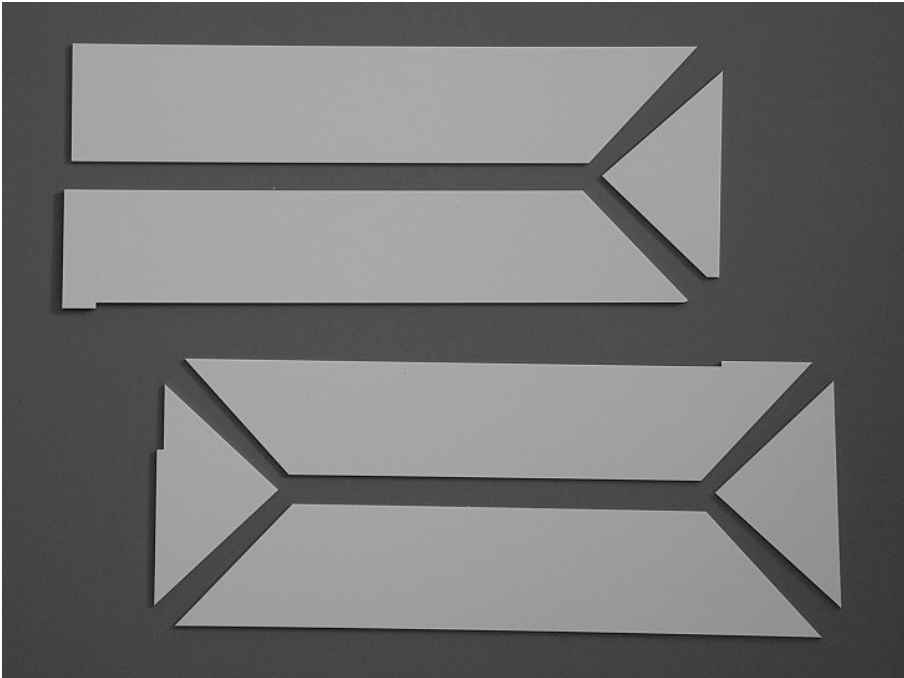
Parts overview



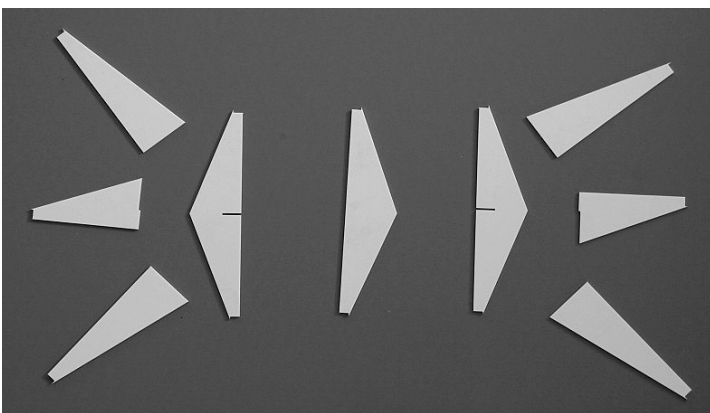
Base plate and walls for the main wing



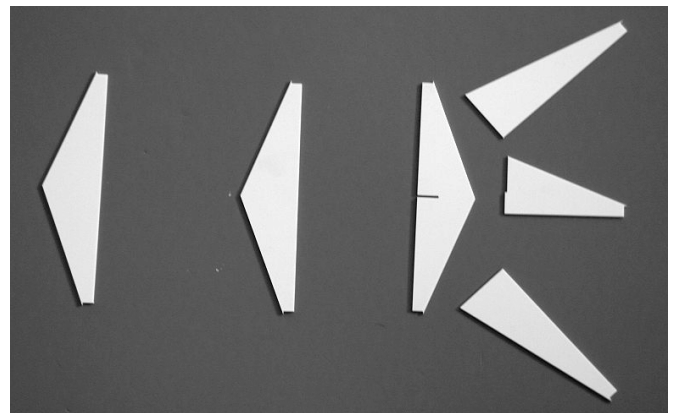
Base plate and walls for the rear wing, SMFS only



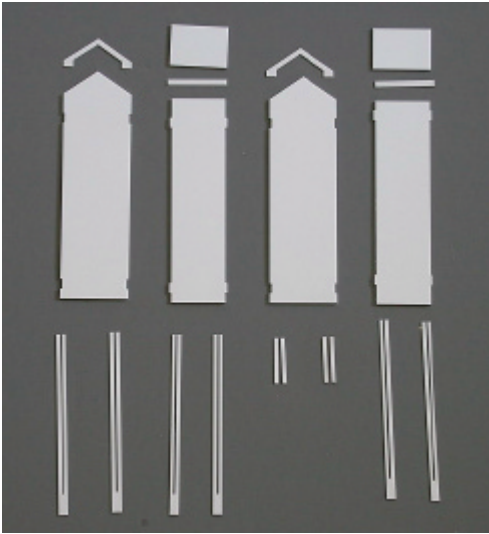
Roof parts for both wings



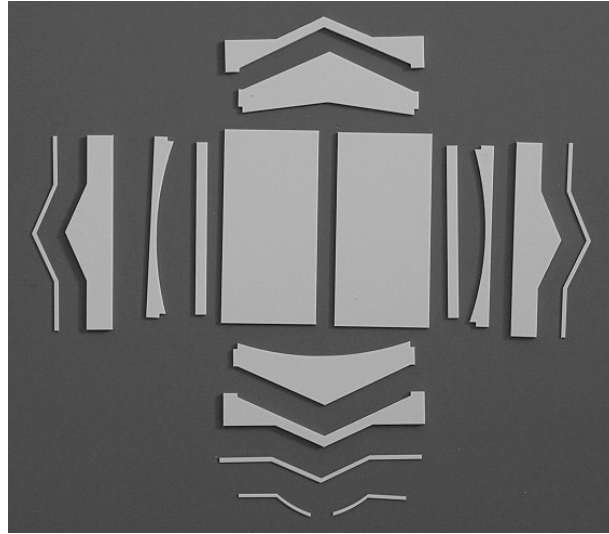
Roof supports for the main wing.



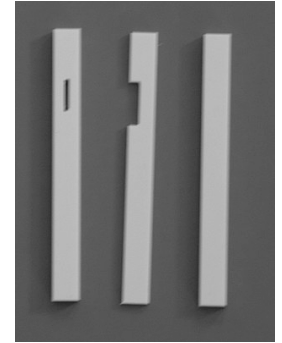
Roof supports for the rear wing, SMFS only



Tower, walls and trim parts



Entrance awning, roof and trim parts



and corner columns



Glass for end-wall window, 1 pc. In SMBD, 3 pcs. in SMFS

1 pc. glass for entry door and end-wall door

SMBD: 1 glass strip for 2. floor windows
SMFS: 2 extra glass strips for rear wing windows

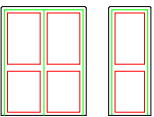
2 glass strips for 1. floor windows in main building



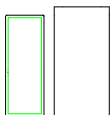
Room window, SMFS: 30 pcs, SMBD: 14 pcs.



Hallway window (end wall), SMFS: 3 pcs. SMBD 1 pc.



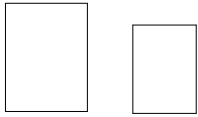
Entrance door
End-wall door, SMFS 2 pcs., SMBD 1 pc.



End-wall door and backing plate, SMFS only



Airconditioner, SMFS: 32 pcs. SMBD: 15 pcs.



Sign base for tower, 4 pcs.
Sign base for awning, 1 pc.

Tools:



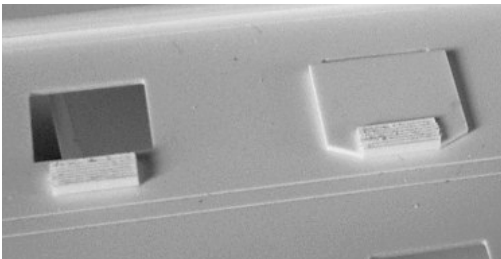
AC mounting tool

Assembly

Before painting, we recommend that you assemble the sides and roof, the tower, the awning, and you may want to mount the air conditioners. The AC's can be mounted after painting using a drop of CA glue. Paint the walls, the window and door frames before installing the windows and doors in the wall. (see painting section)

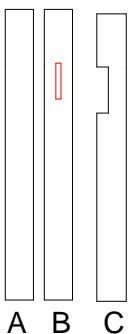
Mounting airconditioners

The easiest way to install the airconditioners (29) is to mount them on the walls before assembling walls. The windows on each side of the entrance door do not have AC's.



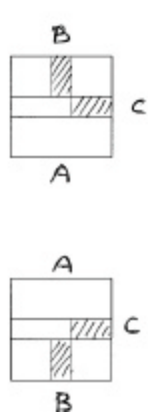
Use the AC mounting tool.
Place the tool in the window opening and slide the AC into the slot, gluing it to the wall.

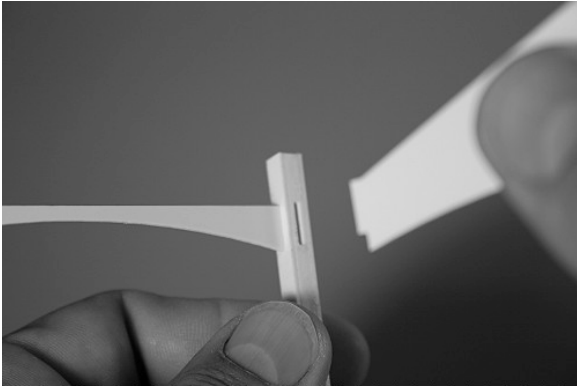
Entrance awning



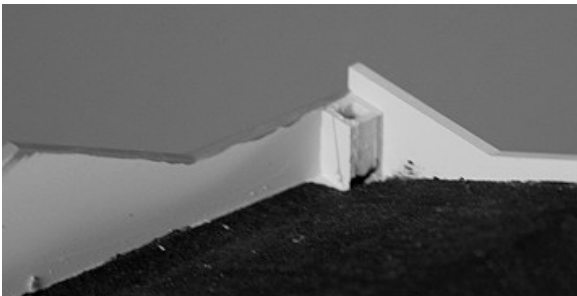
Identify 4 sets of these 3 column parts.

Glue them together in 2 sets of the 2 patterns shown as top view:

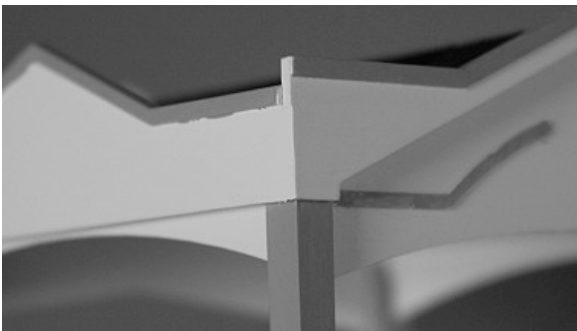




Mount the side inner cross beam in the short slots of the columns and mount the front and rear inner cross beams in the long slots of the columns.

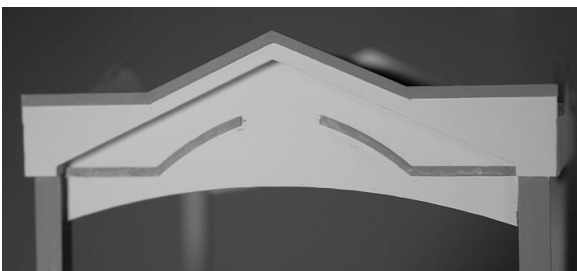


Mount the side outer cross beams so the top edges align with the top of the columns

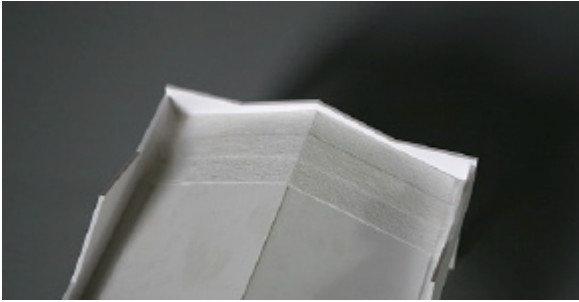


Mount the front and rear outer cross beams so the bottom edges align with the bottom edges of the side beams.

Mount the 2 roof pieces. Mount the 2 roof strips in the open spaces along the side.
Mount the front and side top trim pieces along the top edges of the outer cross beams.

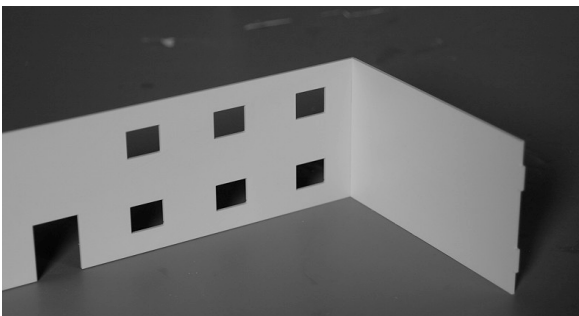


Mount the front decoration pieces as shown in the picture.



Apply the paper tape as tar paper roofing on the awning

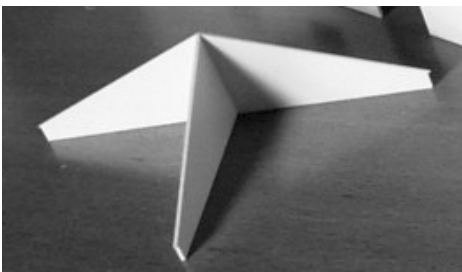
Main building



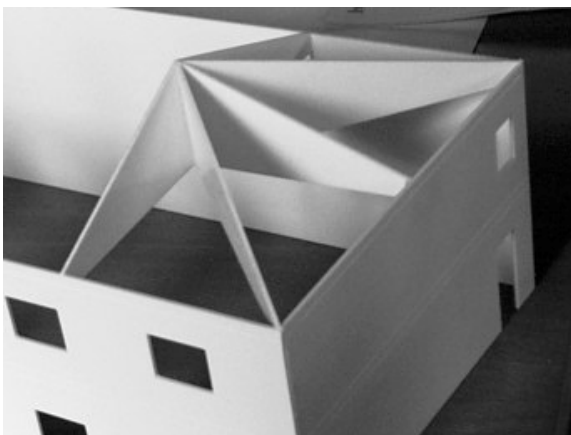
Mount the end walls on the inside of the front wall , aligning the slots and tabs.
Use the base plate as a straight edge, but do NOT glue the base on yet.

Mount the rear wall in the same way.

Roof & supports



Glue the end supports into the slots in the end cross supports



Glue the end support assembly onto the wall frame in both ends (main wing) as shown in the picture.
Glue the diagonal end supports from corner to middle as shown in the picture

Glue the middle cross support onto the wall frame in the middle.

Rear wing (SMFS only)

Assemble the sidewalls and end walls in the same way as the main building.

Glue the end roof support assembly onto the wall frame in the one end and glue the 2 middle cross supports evenly spaced onto the wall frame.

SMBD version:

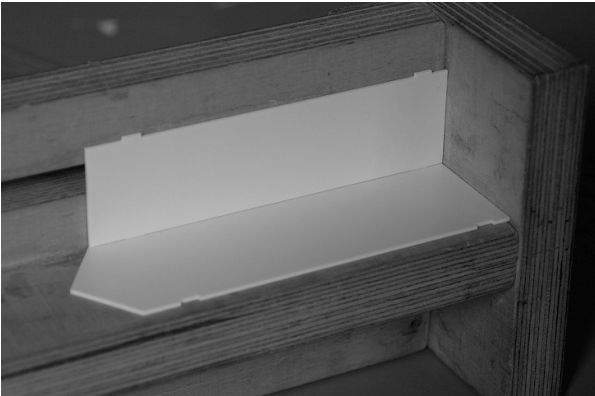
Glue the roof pieces onto the roof supports. The cut in the one end piece is where the tower goes.

SMFS version:

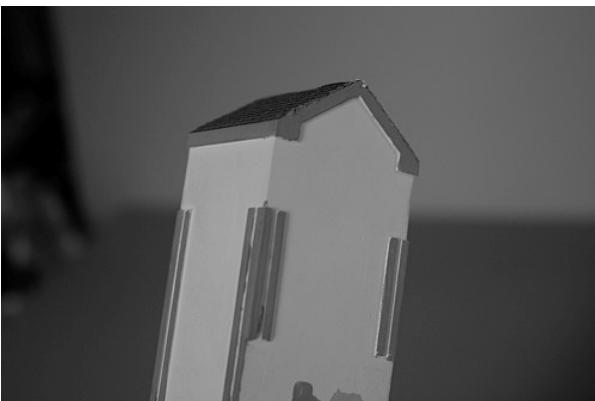
Glue the roof pieces onto the main building roof supports. The cut in the one end piece is where the tower goes and the cut in the rear piece is where the rear wing goes.

Glue the roof pieces onto the rear wing roof supports

Tower



Glue the side walls to the inside of the front & rear walls aligning the slots and tabs. Glue the roof on.



Glue the front top trim and side top trim onto the edges of the front and side walls.



Glue the side corner strips along the edges of the side, the narrower legs flush with the edge.
Glue the front corner strips along the edges of the front, flush with the side corner trim.
Glue the short rear corner strips along the edges of the rear, flush with the side corner trim.

Painting

The grooves on the side walls indicate where the concrete changes color on the prototype. On the model you can use them as paint lines. Airbrushing gives the best result, but of course you can brush paint it instead.

When the base color has dried, mask off and paint the lower wall, the middle stripe and the top stripe with a different color.

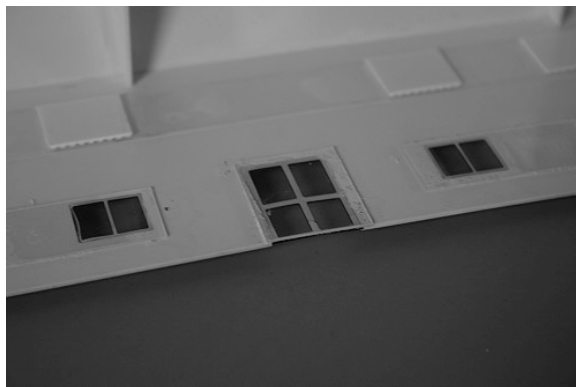
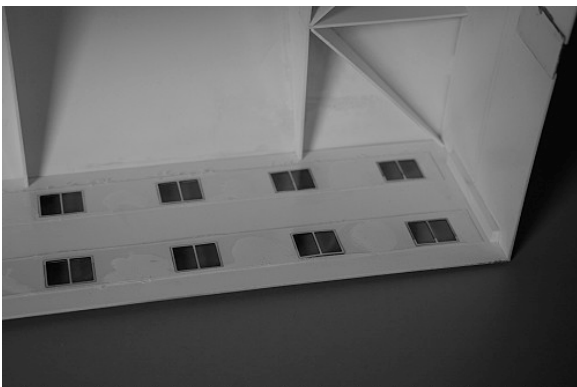
Painting the trim on the entrance awning and tower: When the base color has dried, brush paint the trim very carefully with a different color.

Paint the tar paper roof of the awning flat black or gray.

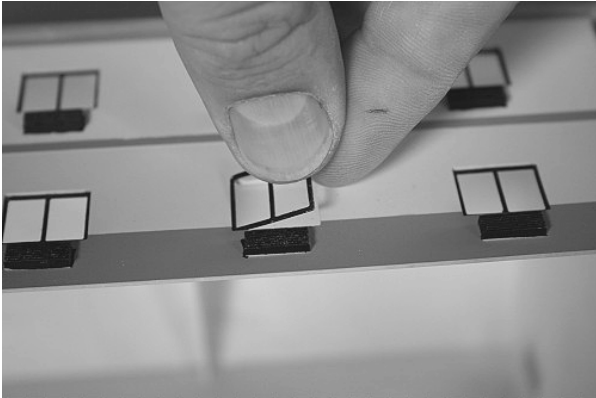
Most motels have either black, white, or aluminum window frames and doors. If you need to paint them, do this before installing them in the walls.

As mentioned earlier, this motel can be converted to almost any chain motel of your choice, depending on the colors you paint it. The colors used on the cover version is Floquil 50/50 Antique white and White for the base color and Floquill Earth for the dark accent color.

Mounting windows & doors



Glue on the clear window strips and the door glass inside the wall as shown.



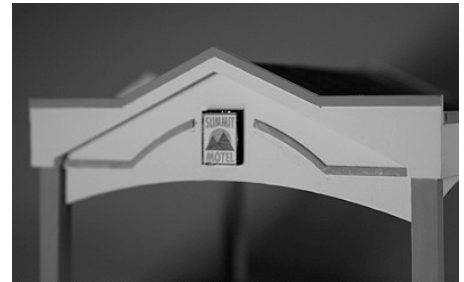
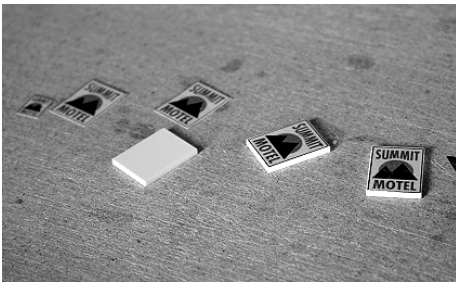
After the glue has set on the window glazing, press fit the window frames into the opening. Your fingers and nails should be the only tools you need. You may use the tip of a knife or another point instrument to press in the corners.

Roofing

Install the roof shingles as described in the instructions enclosed with the shingle strips.

Signs

If you want to use the self-adhesive "Summit Motel" signs included, cut them out with a knife or a pair of scissors along the black edge. Peel off the backing paper and mount it on the sign bases. Carefully touch up the edges with black paint before gluing then on the tower and awning sides as shown in the pictures.



Final installation

To keep the walls straight you should mount the base plate inside the walls at the bottom. Or even better, glue the base plate to the lot on your layout and place the building over it without gluing. This way you can always get to the inside for later installation of interior, curtains or light.

Curtains (not included)

For curtains I have used strips of Evergreen 4528 Metal siding which looks like the curtains on my prototype, but curtain design vary from one motel to another.

Another way of blocking the view into the building is to mount dark tinted window film on the inside of the glazing strips.

I hope you will enjoy your Summit Motel on your layout.

Here are some other products you may enjoy in a future project:



Taco Bell Restaurant



Dave's Coffee Shop Restaurant

Keep updated for new products on our website: www.summit-customcuts.com

Versions:



#SMFS - Full scale version, 15"x13" (38,1 cm x 33 cm)



#SMFS - Backdrop version, 14" x 8½" (35,5 cm x 21,6 cm)

Custom Cuts by  manufactured by

Summit USA, LLC
512 Ford Street
Lake Charles, Louisiana 70601

www.summit-customcuts.com

E-mail: pbl@summit-usa.net



Full scale version overview



Entrance awning



Backdrop version



Backdrop version



Full scale version, rear view

