


Waffle House Restaurant kit in HO scale



Parking lot base and cars not included

This kit includes all building parts and signs milled in white styrene plastic, clear window glazing, Plastruct brick wall and self-adhesive decals. All parts fit together but may need light sanding in joints for cosmetic reasons. The model needs painting.

Some model building and painting skills are required.

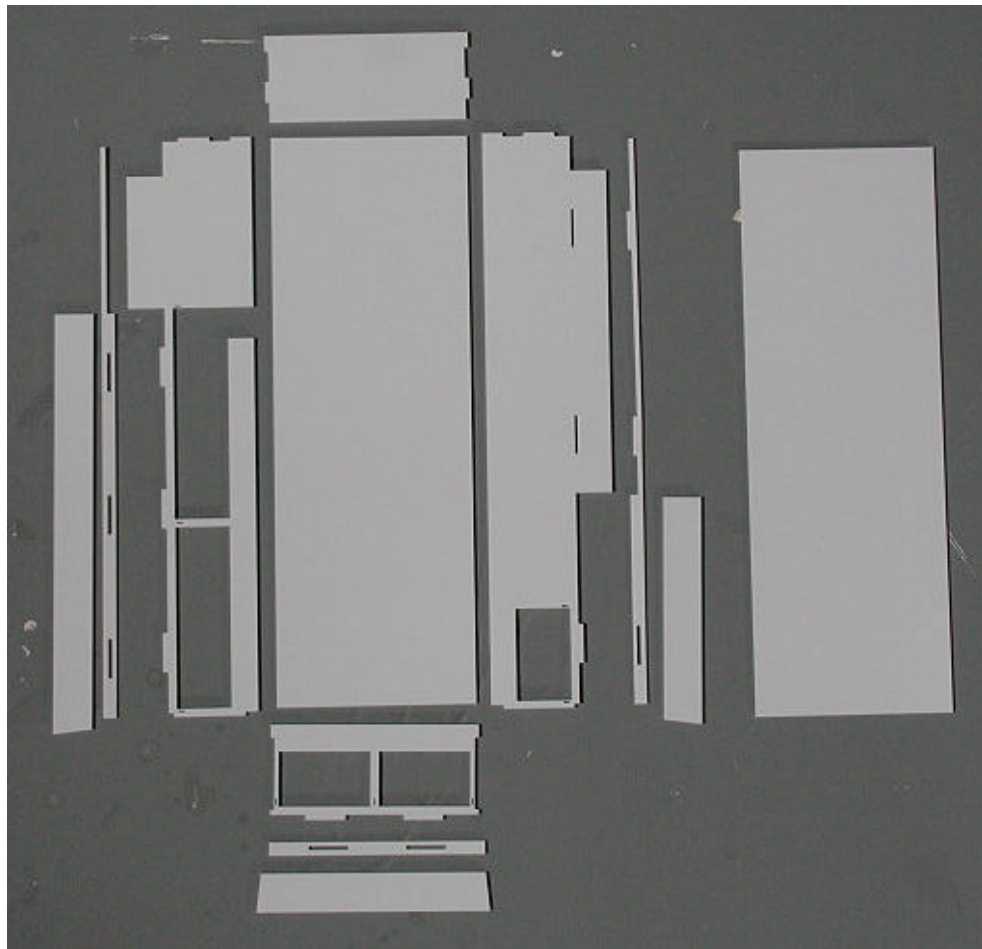
Manufactured by Custom Cuts by 

Summit USA LLC, 512 Ford Street, Lake Charles, LA 70601

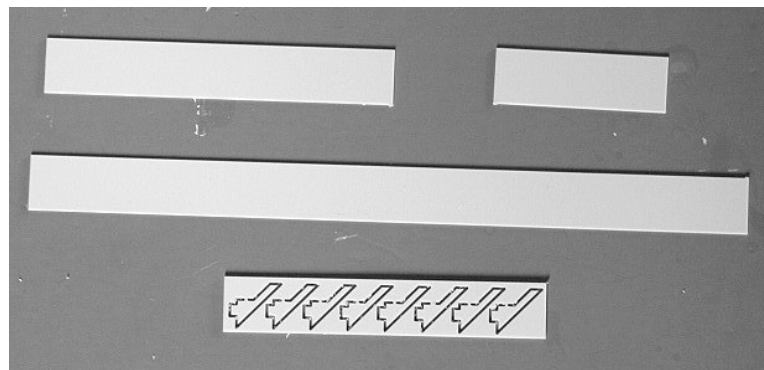
Assembly instructions for Waffle House Restaurant kit

Thank you for buying this Waffle House Restaurant kit. Please take some time to read these instructions before you begin assembling.

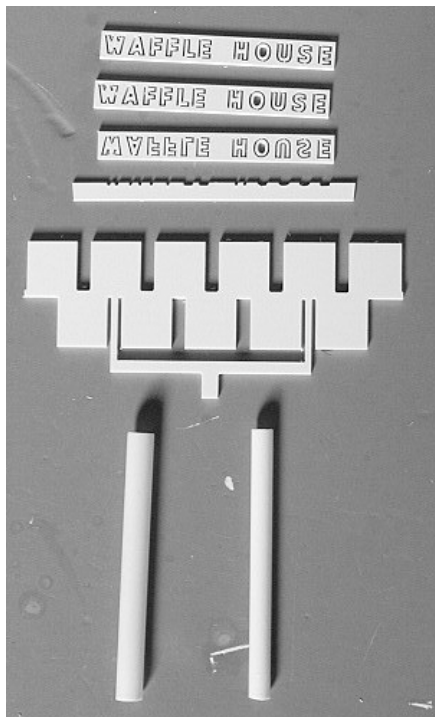
This kit is milled in styrene plastic and is very easy to glue together using Plastruct Plastic Weld or similar glue products. The wall parts are tabbed and slotted for easier assembly. Take your time to identify all parts and lay them out as on the pictures to get an overview of how the kit goes together. Remove the "fillings" from the window openings and window frames and clean all parts for any burrs before you start gluing them together.



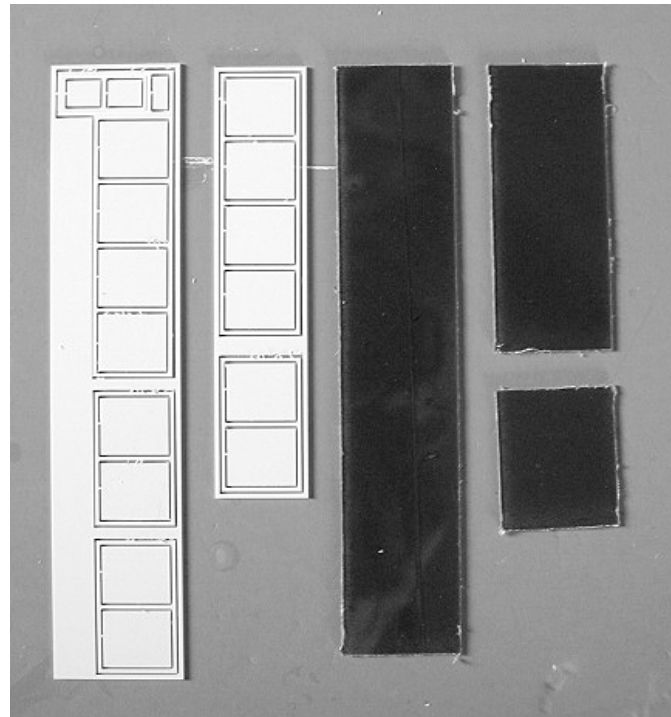
Structure parts overview



Awnings and brackets

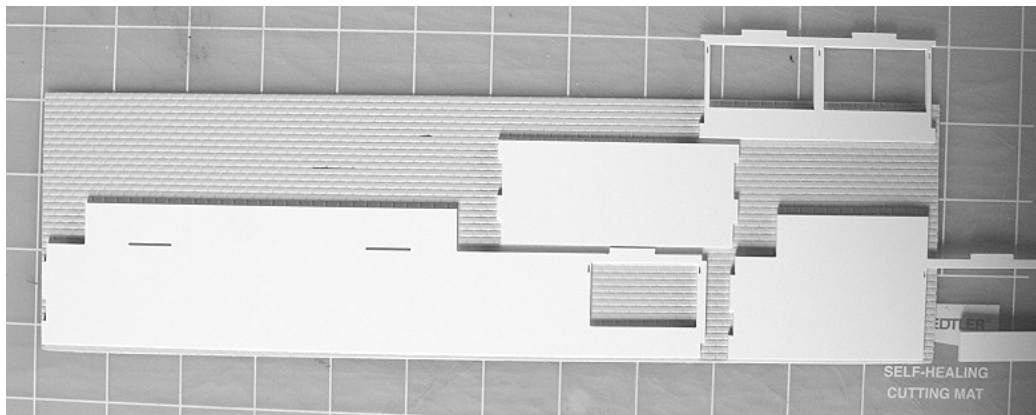


Signs and template



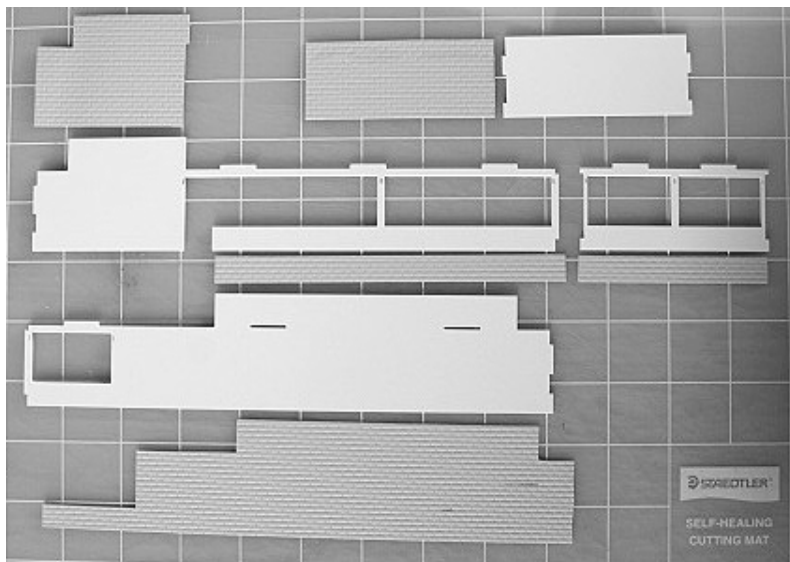
Windows, doors and glazing

Preparation



Use the wall sections as a template to cut the brick sheet to size. Make sure you cut the outside of the wall.

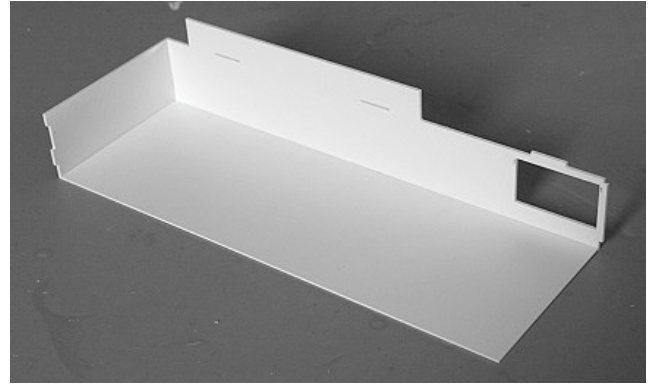
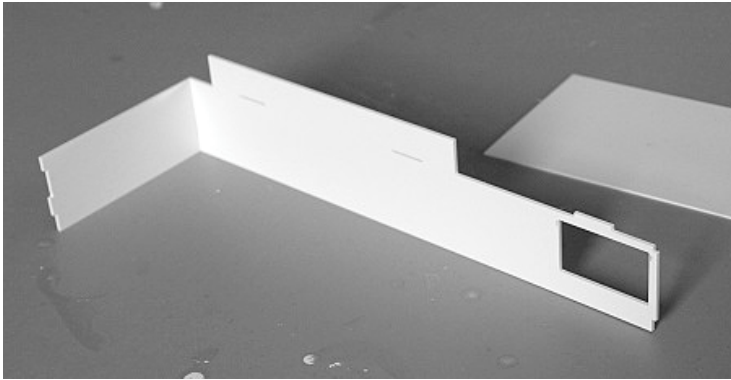
You can easily mirror this building to face the way it is best for your site on the layout.



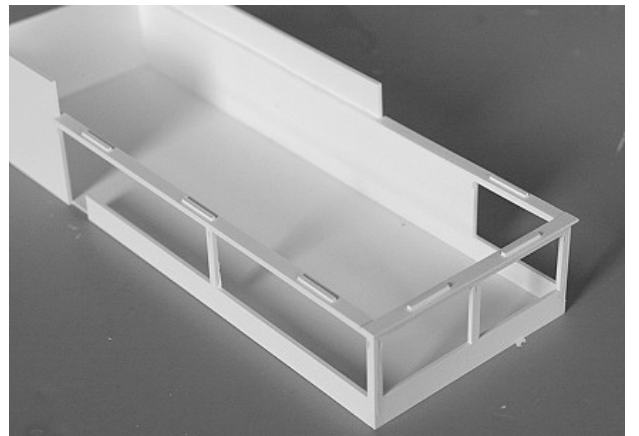
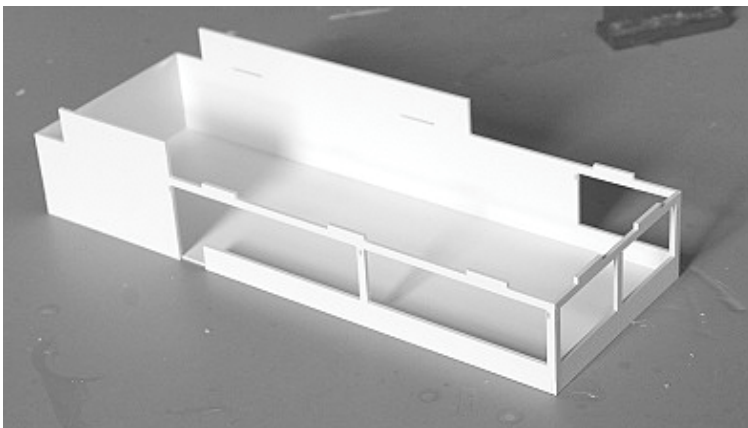
As you can see from this picture, the brick covers all of the solid walls and the low walls under the windows.

Assembly

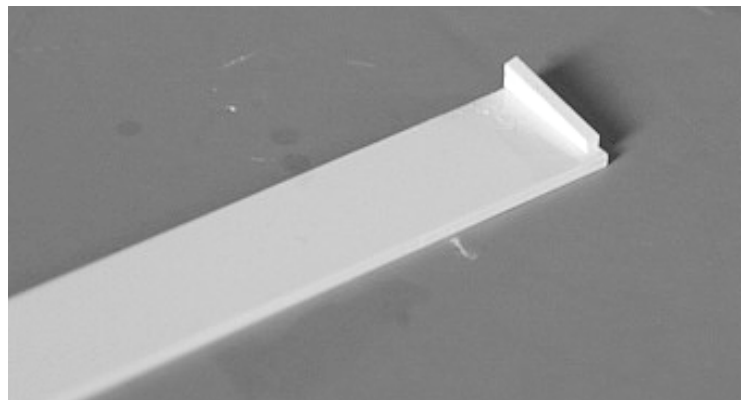
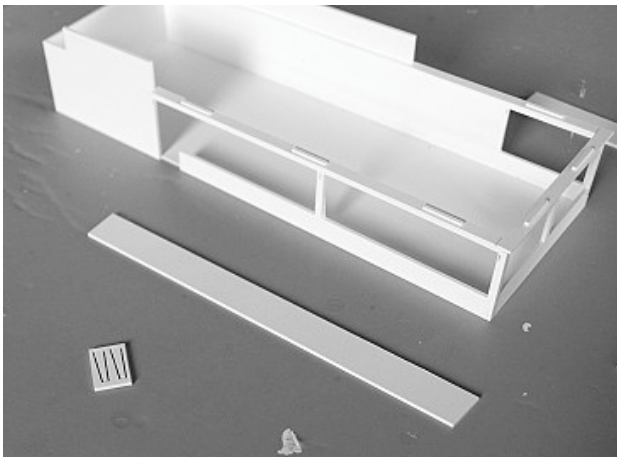
Start by assembling the rear wall and the end wall fitting the tabs and slots, then glue the base plate to the inside of the walls.



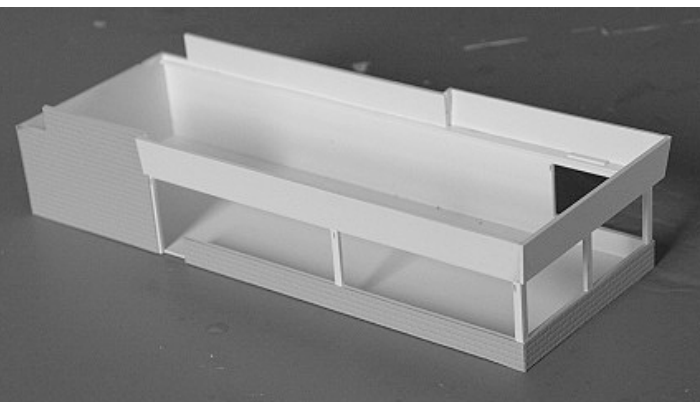
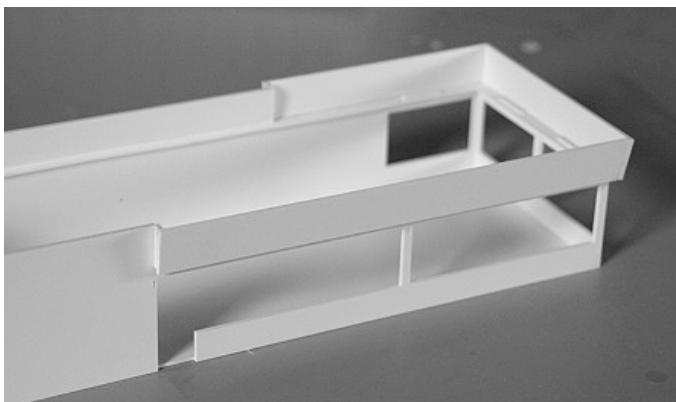
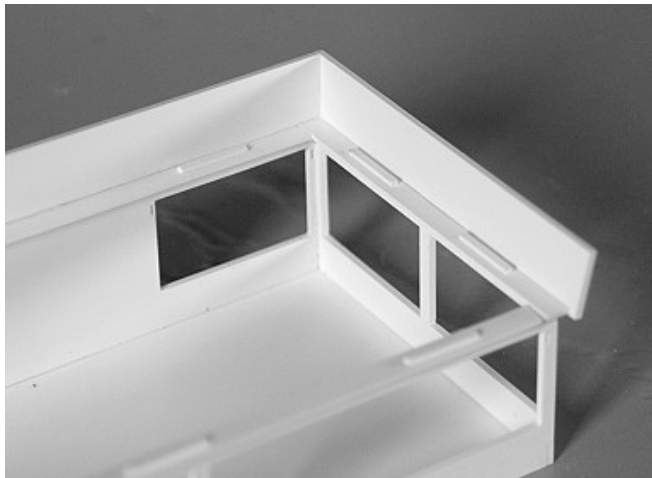
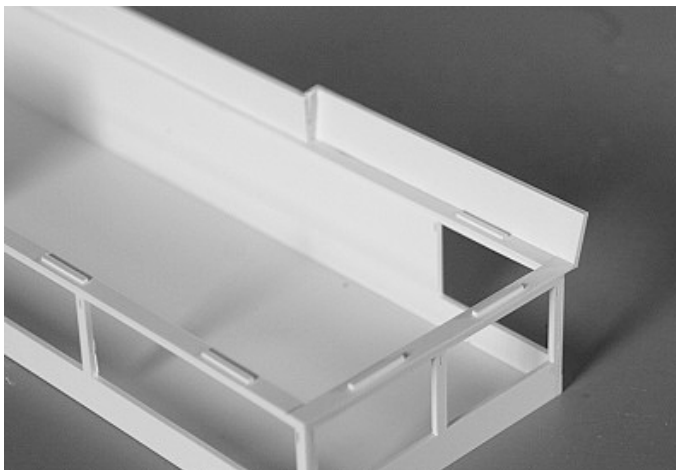
Continue mounting the remaining walls to the base plate. Mount the slotted strips on top of the walls and fit the tabs to in the slots in the wall. This makes the roof support.



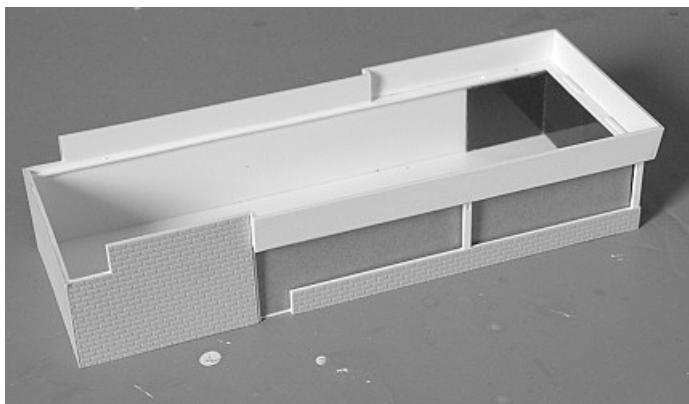
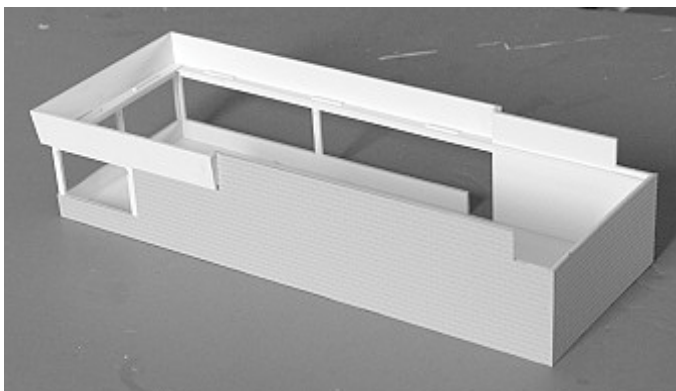
Cut the small tapered end pieces from the sprue and glue them to the straight-angled end of the side wall signs, aligning with the top.



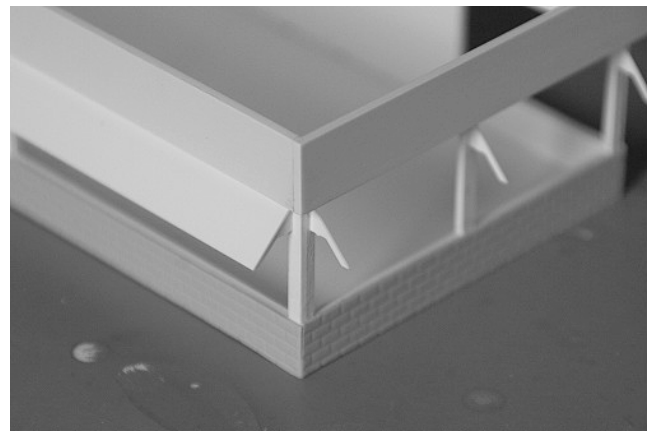
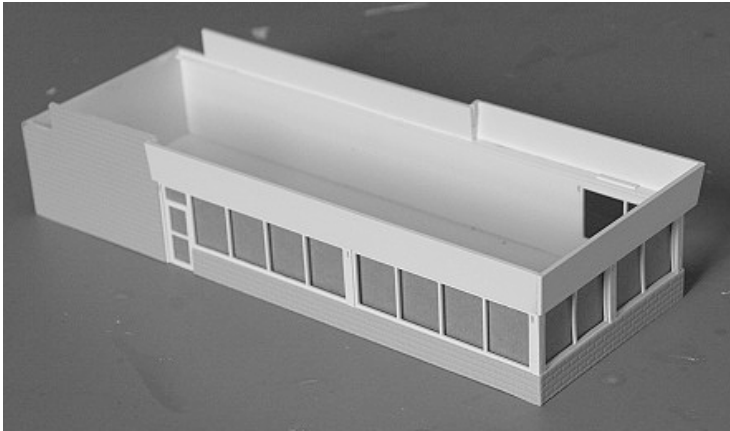
Mount the sign pieces to the outside of the roof support strips, aligning with the downward side. Carefully align the angled corners precisely before the glue sets completely.



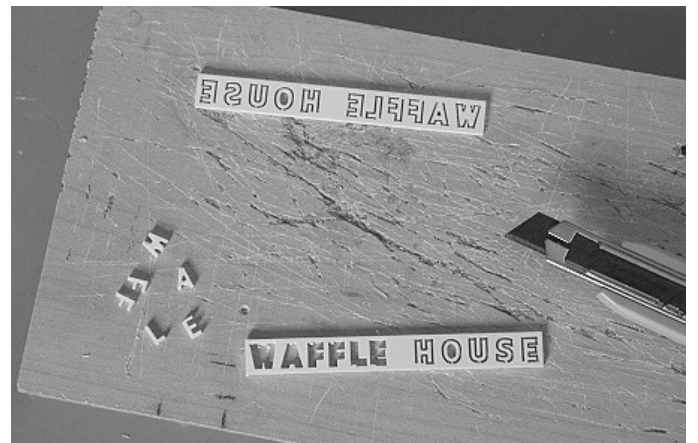
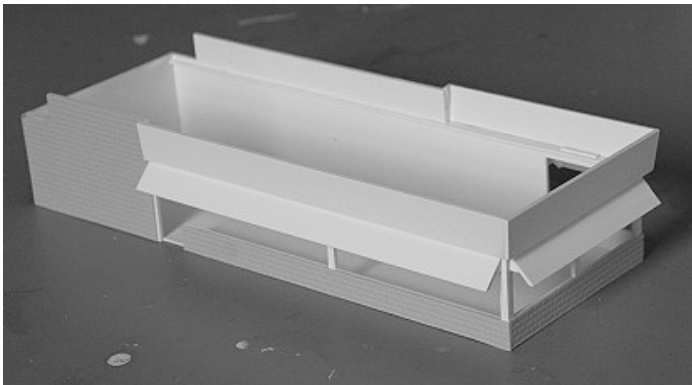
Glue on the brick walls. Do NOT put glue on the whole surface, as this will make the white walls warp - only glue around the edges.



Test fit the clear window glazing to the inside of the wall. Do not glue this before painting.



Also test fit the window frames in the openings. It should be a perfect fit, but if you need to do a little sanding to make it perfect, now is the time to do it. Remove the window frames and the glazing before mounting the awning brackets.

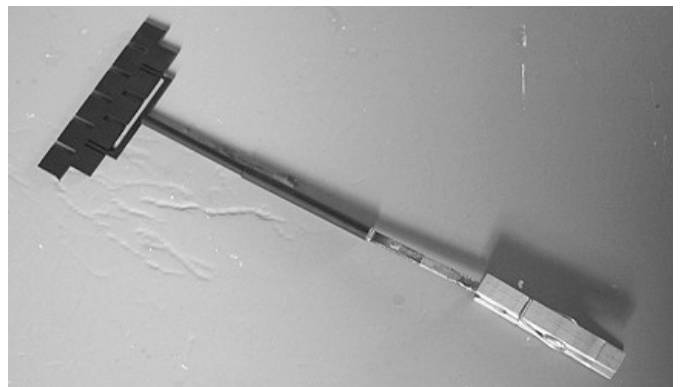
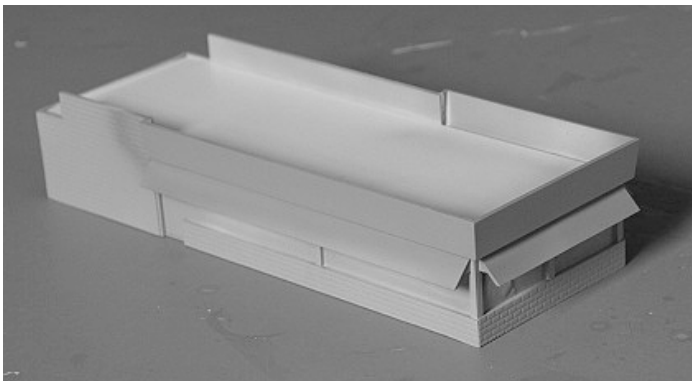


Then mount the awnings to the brackets and also glue along the top to the wall. Cut the logo letters from the sprue with a sharp knife and trim off any burrs.

To make the street sign, glue the 2 pieces of round tubing together so the total length is 6" (15cm) Stick the tab on the bottom of the sign into the tube and glue it.

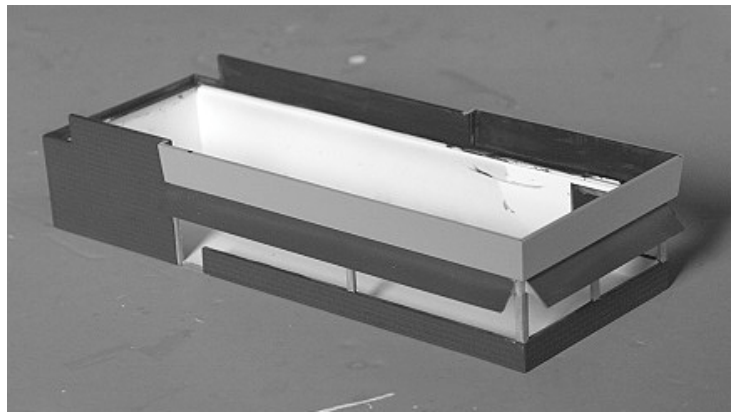
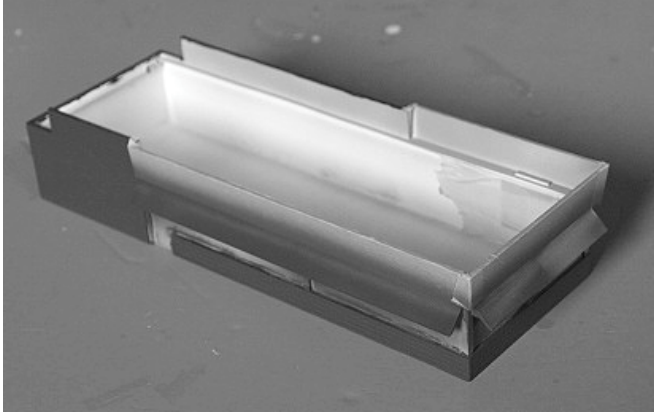
Painting and final assembly

Cover the inside of the window and door openings with masking tape and paint the whole building a coat of gray primer, then paint the sign over the windows yellow.



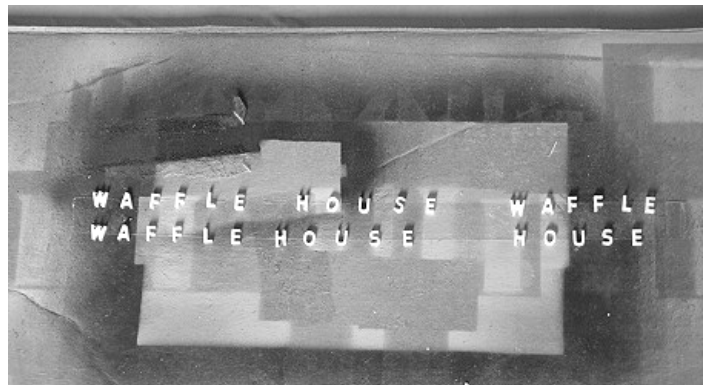
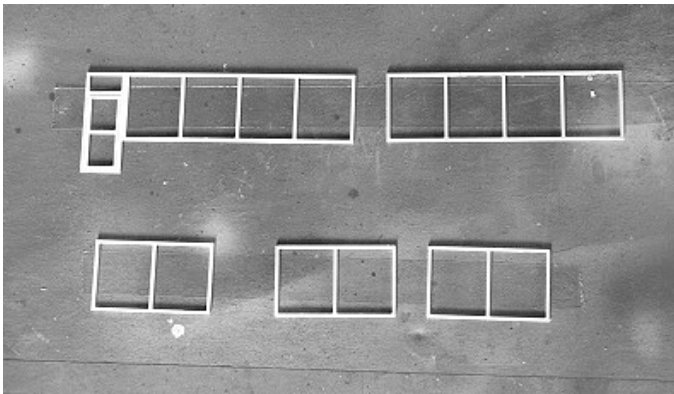
Paint the street sign black, you can insert a stir stick in the tube to hold it.

Let the paint dry at least overnight, before masking over the signs, then paint the awnings red and the brick walls a brownish red. I brush painted the brick walls.

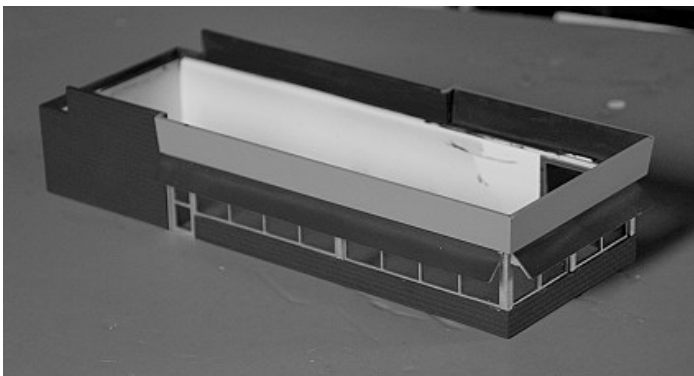


Let the building dry a day or two, or at least overnight, before masking the awnings and around the windows, then paint them aluminum. Paint the roof and the inside of the walls above the roof Grimy Black.

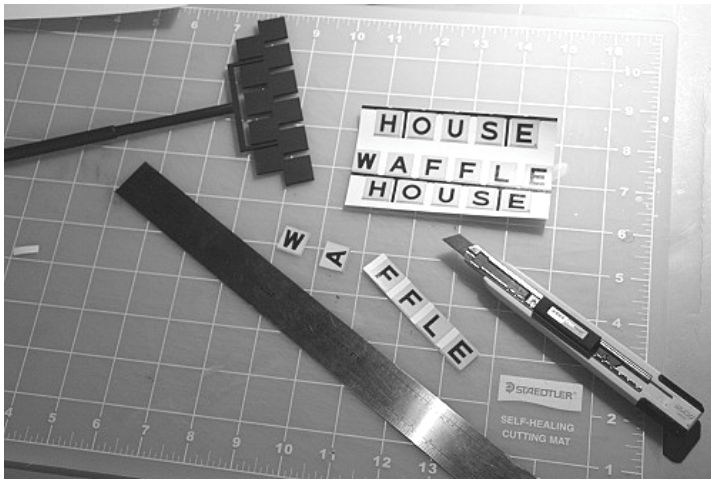
Mount the window frames and logo letters on a piece of cardboard with double-sided tape and paint the window frames aluminum and the letters black.



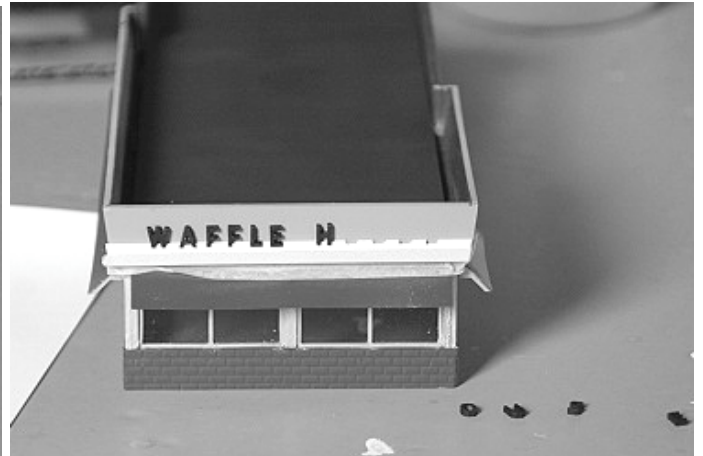
Glue the window glazing to the inside of the walls. The glazing in this kit is clear in case you want to make interior. If you want the windows tinted as on this demonstration model, apply some car window film. This you can get in any auto parts store.



Mount the door and window frames in the openings. It should be a press fit so you do not need to glue them in. If you find them too loose, glue them in with a tiny amount of Crystal Clear or similar liquid glass product.



Before handling the decal sheet, I recommend you seal it with a coat of Testors Dull Cote or similar sealer to prevent damage to the print. When dry, cut out the letters using a sharp hobby knife and a steel ruler. Peel off the backing paper and attach them to the sign.



Mount the logo template on the sign surface with a piece of masking tape, aligning the bottom edges, then glue on the letters in place as shown using a tiny amount of white glue. Let the glue set before removing the template. Repeat these steps on the other sides.

Finally put the roof in place. This is also a press fit you do not need to glue. This way it can be removed for installation of interior and lights.

If you want to detail the roof with vents and airconditioners, we recommend Walthers #933-3733 Roof Details Kit.

Paints used on this model:

Floquil 110009 Gray Primer
 Floquil 110178 ATSF Yellow
 Floquil 110179 ATSF Mineral Brown
 Floquil 110450 SOO Line Red

Floquil 110010 Engine Black
 Floquil 110013 Grimy Black
 Testors 1781 Aluminum



Enjoy the Waffle House on your layout.

Here are some other products you may enjoy in a future project:



#SMFS Summit Motel, full version



#DP-001 Domino's Pizza take-out



#CS-001 Dave's Coffee Shop



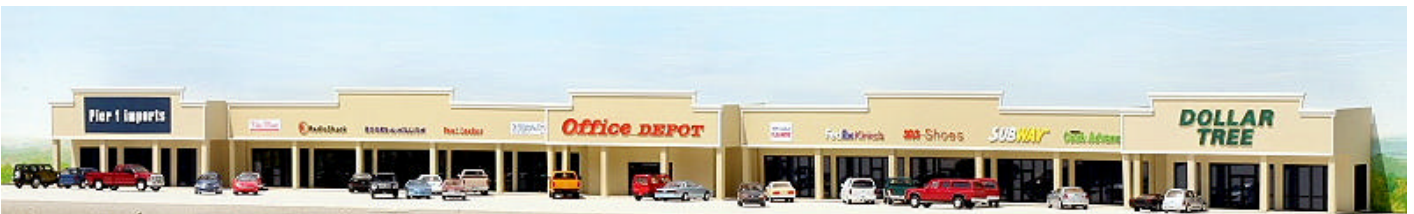
#TB-001 Taco Bell Restaurant



#CVS-001 CVS Pharmacy



#LO-001 Lowe's backdrop building



Mall complex



#ML-001 Strip Mall backdrop building #1



#ML-002 Strip Mall backdrop building #2



#ML-003 Office Depot backdrop building

#ML-004 Mall street sign



#ML-005 Pier 1 Imports backdrop building

#ML-006 Dollar Tree backdrop building



#JB-001 Jack-In-The-Box Restaurant



#SW-001 Subway Restaurant



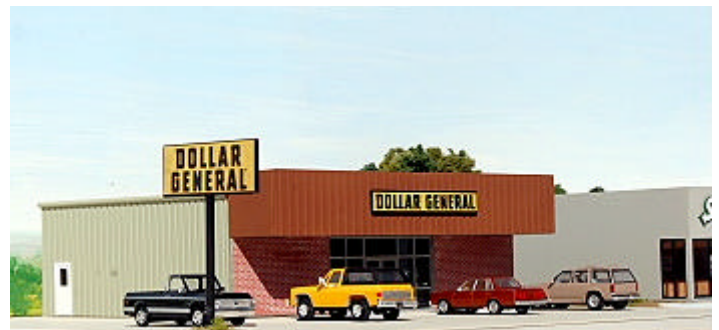
#OR-001 O'Reilly Auto Parts Store



#WH-001 Waffle House Restaurant



#SH-001 Shell Gas Station & Store



#DG-001 Dollar General Store



#GS-001 Arco Gas Station backdrop

Keep updated for new products on our website: www.summit-customcuts.com